

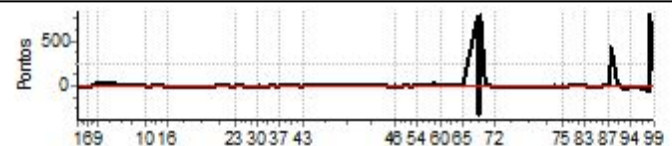
Performance Individual

PC	Tp	Trc	DistPC	Ideal	Passagem	Pen	Erro	Pontos	NoPC	AtePC
N u m	30	30 / Icaro Macedo / Helick Macedo								
		Cat / NL / Largada Turismo / 1 / 09:15:00								
		Pajero Tr4								
PC	Tp	Trc	DistPC	Ideal	Passagem	Pen	Erro	Pontos	NoPC	AtePC
1	Tmp	5	1117	9:51:40.93	9:51:40.77	0	0.2s	-2	2°	2°
2	Tmp	8	1473	9:52:24.02	9:52:23.81	0	0.2s	-2	2°	3°
3	Tmp	12	1769	9:52:55.64	9:52:54.92	0	0.7s	-7	2°	2°
4	Tmp	14	2219	9:53:38.63	9:53:38.01	0	0.6s	-6	1°	2°
5	Tmp	16	2674	9:54:34.28	9:54:33.61	0	0.7s	-7	1°	1°
6	Tmp	17	3343	9:55:34.54	9:55:32.41	0	2.1s	-21	1°	1°
7	Tmp	20	4595	9:58:15.92	9:58:15.40	0	0.5s	-5	1°	1°
8	Tmp	23	5323	10:00:10.43	10:00:10.46	0	0.0s	0	1°	1°
9	Tmp	24	5384	10:00:20.49	10:00:23.69	0	3.2s	[+32]	4°	1°
10	Tmp	26	486	10:21:24.30	10:21:24.30	0	0.0s	0	1°	1°
11	Tmp	26	1037	10:22:24.41	10:22:23.07	0	1.3s	-13	2°	1°
12	Tmp	27	2092	10:24:06.86	10:24:07.20	0	0.3s	+3	3°	1°
13	Tmp	31	2736	10:25:24.70	10:25:25.11	0	0.4s	+4	1°	1°
14	Tmp	32	3386	10:26:34.79	10:26:34.70	0	0.1s	-1	3°	1°
15	Tmp	37	4608	10:29:08.78	10:29:09.34	0	0.6s	+6	4°	1°
16	Tmp	39	5354	10:30:52.93	10:30:52.01	0	0.9s	[-9]	3°	1°
17	Tmp	42	417	10:52:20.02	10:52:19.52	0	0.5s	-5	5°	1°
18	Tmp	43	941	10:53:38.62	10:53:38.42	0	0.2s	-2	4°	1°
19	Tmp	45	1729	10:55:06.17	10:55:06.10	0	0.1s	-1	4°	1°
20	Tmp	50	3167	10:57:59.83	10:57:59.31	0	0.5s	-5	4°	1°
21	Tmp	51	3454	10:58:36.79	10:58:36.75	0	0.0s	0	2°	1°
22	Tmp	52	3576	10:58:53.32	10:58:52.48	0	0.8s	-8	5°	1°
23	Tmp	54	4440	11:00:24.66	11:00:24.87	0	0.2s	+2	3°	1°
24	Tmp	56	5223	11:01:58.41	11:02:00.10	0	1.7s	+17	3°	1°
25	Tmp	58	5422	11:02:33.51	11:02:33.06	0	0.5s	-5	1°	1°
26	Tmp	60	5511	11:02:48.16	11:02:50.35	0	2.2s	[+22]	3°	2°
27	Tmp	64	180	11:03:44.93	11:03:44.84	0	0.1s	-1	2°	2°
28	Tmp	65	840	11:04:47.38	11:04:47.71	0	0.3s	+3	2°	2°
29	Tmp	70	2722	11:08:14.58	11:08:13.73	0	0.9s	[-9]	4°	2°
30	Tmp	72	280	11:10:29.32	11:10:28.54	0	0.8s	-8	3°	2°
31	Tmp	76	1240	11:11:54.86	11:11:54.58	0	0.3s	-3	3°	2°
32	Tmp	78	2080	11:13:30.56	11:13:29.27	0	1.3s	-13	5°	2°
33	Tmp	80	2910	11:16:06.84	11:16:06.89	0	0.1s	+1	1°	2°
34	Tmp	80	3363	11:16:56.26	11:16:56.42	0	0.2s	+2	3°	2°
35	Tmp	84	4626	11:18:59.70	11:18:59.72	0	0.0s	0	1°	2°
36	Tmp	86	5021	11:19:46.48	11:19:45.80	0	0.7s	-7	4°	2°
37	Tmp	88	5285	11:20:29.20	11:20:29.22	0	0.0s	0	2°	2°
38	Tmp	90	5886	11:21:35.28	11:21:35.32	0	0.0s	0	1°	2°
39	Tmp	97	6994	11:26:08.77	11:26:08.72	0	0.1s	-1	2°	2°
40	Tmp	99	7397	11:26:54.17	11:26:54.17	0	0.0s	0	1°	2°
41	Tmp	103	8237	11:28:33.56	11:28:33.34	0	0.2s	-2	2°	2°
42	Tmp	107	8883	11:29:56.80	11:29:55.88	0	0.9s	-9	5°	2°
43	Tmp	107	9424	11:30:52.45	11:30:52.50	0	0.1s	+1	1°	2°
Etapa A	Num	30	Pen	0	PCZ	7	Total PP	173	PG	15
44	Tmp	111	2870	12:08:24.81	12:08:24.71	0	0.1s	-1	2°	2°
45	Tmp	113	3907	12:10:01.18	12:10:00.32	0	0.9s	[-9]	4°	3°
46	Tmp	114	4630	12:11:06.61	12:11:06.15	0	0.5s	-5	5°	3°
47	Tmp	115	5311	12:12:18.12	12:12:16.90	0	1.2s	-12	5°	3°
48	Tmp	117	6518	12:14:18.16	12:14:18.14	0	0.0s	0	1°	3°
49	Tmp	118	6909	12:14:58.31	12:14:57.77	0	0.5s	-5	1°	2°
50	Tmp	120	7702	12:16:20.78	12:16:21.98	0	1.2s	+12	3°	2°
51	Tmp	120	8376	12:17:28.18	12:17:28.38	0	0.2s	+2	2°	1°
52	Tmp	122	9079	12:18:50.26	12:18:49.59	0	0.7s	-7	2°	1°
53	Tmp	124	9502	12:19:41.23	12:19:43.56	0	2.3s	+23	4°	2°
54	Tmp	124	9910	12:20:24.43	12:20:24.83	0	0.4s	+4	2°	2°
55	Tmp	125	10582	12:22:01.97	12:22:02.07	0	0.1s	+1	2°	1°
56	Tmp	126	11580	12:24:40.04	12:24:39.86	0	0.2s	-2	2°	1°
57	Tmp	130	12308	12:26:26.33	12:26:26.52	0	0.2s	+2	3°	1°
58	Tmp	131	12967	12:28:15.68	12:28:19.20	0	3.5s	+35	5°	1°
59	Tmp	133	13810	12:29:51.72	12:29:51.63	0	0.1s	-1	2°	1°

PC	Tp	Trc	DistPC	Ideal	Passagem	Pen	Erro	Pontos	NoPC	AtePC
60	Tmp	136	14517	12:30:59.93	12:31:00.03	0	0.1s	+1	3°	1°
61	Tmp	137	16120	12:33:02.40	12:33:02.22	0	0.2s	-2	2°	1°
62	Tmp	142	17616	12:35:27.22	12:35:27.71	0	0.5s	+5	5°	1°
63	Tmp	147	18970	12:37:55.71	12:37:55.44	0	0.3s	-3	3°	1°
64	Tmp	152	20136	12:40:16.64	12:40:16.85	0	0.2s	+2	3°	1°
65	Tmp	153	20656	12:41:17.99	12:41:18.08	0	0.1s	+1	2°	1°
66	Tmp	162	23797	12:47:18.80	12:48:32.42	0	1m13s	+736	4°	1°
67	Tmp	165	23916	12:47:39.02	12:48:53.86	0	1m14s	+748	3°	4°
68	Tmp	166	24102	12:48:01.00	12:47:29.92	0	31.1s	-311	3°	4°
69	Tmp	168	24305	12:48:32.07	12:49:49.81	0	1m17s	[+777]	4°	4°
70	Tmp	173	856	12:51:00.49	12:51:05.51	0	5.0s	+50	3°	4°
71	Tmp	175	1001	12:51:16.85	12:51:21.10	0	4.3s	+43	2°	4°
72	Tmp	183	3058	12:54:51.42	12:54:49.90	0	1.5s	-15	4°	4°
Etapa B	Num	30	Pen	0	PCZ	1	Total PP	2029	PG	13

73	Tmp	191	1667	13:21:20.87	13:21:20.69	0	0.2s	-2	5°	5°
74	Tmp	193	2492	13:22:50.30	13:22:49.66	0	0.6s	-6	3°	5°
75	Tmp	195	3528	13:24:32.72	13:24:32.94	0	0.2s	+2	3°	4°
76	Tmp	197	4054	13:25:28.81	13:25:28.75	0	0.1s	-1	1°	3°
77	Tmp	201	4597	13:26:50.81	13:26:50.24	0	0.6s	-6	4°	3°
78	Tmp	202	4870	13:27:18.38	13:27:18.48	0	0.1s	+1	2°	3°
79	Tmp	203	5009	13:27:30.30	13:27:31.03	0	0.7s	+7	4°	3°
80	Tmp	207	6290	13:29:40.26	13:29:40.26	0	0.0s	0	2°	2°
81	Tmp	210	7010	13:31:00.45	13:31:00.78	0	0.3s	+3	2°	2°
82	Tmp	212	7742	13:32:12.30	13:32:14.33	0	2.0s	+20	1°	2°
83	Tmp	217	9329	13:34:45.78	13:34:47.72	0	1.9s	+19	3°	2°
84	Tmp	220	9888	13:35:41.83	13:35:41.37	0	0.5s	-5	5°	3°
85	Tmp	228	11818	13:39:17.96	13:39:16.88	0	1.1s	-11	5°	3°
86	Tmp	230	13589	13:42:12.46	13:42:12.48	0	0.0s	0	1°	3°
87	Tmp	235	15094	13:45:01.49	13:45:01.83	0	0.3s	+3	5°	3°
88	Tmp	239	15732	13:46:04.63	13:46:08.88	0	4.3s	+43	4°	3°
90	Tmp	244	16045	13:46:50.40	13:47:32.74	0	42.3s	+423	5°	4°
91	Tmp	247	17683	13:49:38.41	13:49:38.44	0	0.0s	0	1°	3°
92	Tmp	249	18264	13:50:41.37	13:50:41.01	0	0.4s	-4	1°	1°
93	Tmp	249	18716	13:51:26.57	13:51:23.29	0	3.3s	-33	5°	4°
94	Tmp	254	20436	13:55:12.61	13:55:11.71	0	0.9s	[-9]	4°	3°
95	Tmp	256	21647	13:57:27.42	13:57:25.28	0	2.1s	-21	4°	4°
96	Tmp	258	22886	13:59:26.84	13:59:26.10	0	0.7s	-7	3°	4°
97	Tmp	263	25065	14:03:24.30	14:03:19.48	0	4.8s	-48	2°	2°
98	Tmp	264	25179	14:03:41.18	14:05:01.81	0	1m20s	[+806]	5°	5°
99	Tmp	267	25981	14:05:31.10	14:05:48.15	0	17.1s	+171	5°	5°
Etapa C	Num	30	Pen	0	PCZ	3	Total PP	836	PG	12

n°	1	A PP	173	2°	B PP	2029	4°	C PP	836	5°	Tot PP	3038	Col.	3°
-----------	----------	-------------	-----	----	-------------	------	----	-------------	-----	----	---------------	------	-------------	----



PC	Tp	Trc	DistPC	Ideal	Passagem	Pen	Erro	Pontos	NoPC	AtePC
N u m	31	31 / Enedson Gomes / Anna Campos								
		Cat / NL / Largada Turismo / 2 / 09:16:00								
		1º								
PC	Tp	Trc	DistPC	Ideal	Passagem	Pen	Erro	Pontos	NoPC	AtePC
1	Tmp	5	1117	9:52:40.93	9:52:41.05	0	0.1s	+1	1º	1º
2	Tmp	8	1473	9:53:24.02	9:53:23.60	0	0.4s	-4	3º	1º
3	Tmp	12	1769	9:53:55.64	9:53:54.43	0	1.2s	-12	3º	3º
4	Tmp	14	2219	9:54:38.63	9:54:37.35	0	1.3s	-13	3º	3º
5	Tmp	16	2674	9:55:34.28	9:55:32.33	0	2.0s	-20	3º	3º
6	Tmp	17	3343	9:56:34.54	9:56:30.95	0	3.6s	-36	3º	3º
7	Tmp	20	4595	9:59:15.92	9:59:13.57	0	2.4s	-24	3º	3º
8	Tmp	23	5323	10:01:10.43	10:01:08.60	0	1.8s	-18	3º	3º
9	Tmp	24	5384	10:01:20.49	10:01:19.69	0	0.8s	-8	2º	3º
10	Tmp	26	486	10:22:24.30	10:22:24.05	0	0.3s	-3	3º	3º
11	Tmp	26	1037	10:23:24.41	10:23:29.64	0	5.2s	[+52]	3º	3º
12	Tmp	27	2092	10:25:06.86	10:25:06.77	0	0.1s	-1	1º	3º
13	Tmp	31	2736	10:26:24.70	10:26:25.60	0	0.9s	[+9]	3º	3º
14	Tmp	32	3386	10:27:34.79	10:27:33.95	0	0.8s	-8	5º	3º
15	Tmp	37	4608	10:30:08.78	10:30:08.86	0	0.1s	+1	3º	3º
16	Tmp	39	5354	10:31:52.93	10:31:51.10	0	1.8s	-18	4º	3º
17	Tmp	42	417	10:53:20.02	10:53:19.71	0	0.3s	-3	3º	3º
18	Tmp	43	941	10:54:38.62	10:54:38.68	0	0.1s	+1	2º	3º
19	Tmp	45	1729	10:56:06.17	10:56:06.26	0	0.1s	+1	3º	3º
20	Tmp	50	3167	10:58:59.83	10:58:59.09	0	0.7s	-7	5º	3º
21	Tmp	51	3454	10:59:36.79	10:59:36.75	0	0.0s	0	1º	3º
22	Tmp	52	3576	10:59:53.32	10:59:52.97	0	0.4s	-4	4º	3º
23	Tmp	54	4440	11:01:24.66	11:01:24.78	0	0.1s	+1	2º	3º
24	Tmp	56	5223	11:02:58.41	11:02:58.22	0	0.2s	-2	1º	3º
25	Tmp	58	5422	11:03:33.51	11:03:31.87	0	1.6s	-16	4º	3º
26	Tmp	60	5511	11:03:48.16	11:03:46.65	0	1.5s	-15	2º	3º
27	Tmp	64	180	11:04:44.93	11:04:42.73	0	2.2s	-22	4º	3º
28	Tmp	65	840	11:05:47.38	11:05:43.97	0	3.4s	-34	4º	3º
29	Tmp	70	2722	11:09:14.58	11:09:13.72	0	0.9s	[-9]	3º	3º
30	Tmp	72	280	11:11:29.32	11:11:28.71	0	0.6s	-6	2º	3º
31	Tmp	76	1240	11:12:54.86	11:12:54.43	0	0.4s	-4	4º	3º
32	Tmp	78	2080	11:14:30.56	11:14:29.70	0	0.9s	-9	4º	3º
33	Tmp	80	2910	11:17:06.84	11:17:06.11	0	0.7s	-7	4º	3º
34	Tmp	80	3363	11:17:56.26	11:17:55.73	0	0.5s	-5	4º	3º
35	Tmp	84	4626	11:19:59.70	11:20:01.15	0	1.5s	[+15]	3º	3º
36	Tmp	86	5021	11:20:46.48	11:20:45.60	0	0.9s	-9	5º	3º
37	Tmp	88	5285	11:21:29.20	11:21:28.50	0	0.7s	-7	4º	3º
38	Tmp	90	5886	11:22:35.28	11:22:34.46	0	0.8s	-8	4º	3º
39	Tmp	97	6994	11:27:08.77	11:27:08.85	0	0.1s	+1	1º	3º
40	Tmp	99	7397	11:27:54.17	11:27:53.97	0	0.2s	-2	4º	3º
41	Tmp	103	8237	11:29:33.56	11:29:34.50	0	0.9s	+9	4º	3º
42	Tmp	107	8883	11:30:56.80	11:30:56.53	0	0.3s	-3	3º	3º
43	Tmp	107	9424	11:31:52.45	11:31:52.28	0	0.2s	-2	3º	3º
Etapa A	Num	31	Pen	0	PCZ	1	Total PP	345	PG	14
44	Tmp	111	2870	12:09:24.81	12:09:24.80	0	0.0s	0	1º	1º
45	Tmp	113	3907	12:11:01.18	12:11:00.93	0	0.3s	-3	2º	1º
46	Tmp	114	4630	12:12:06.61	12:12:06.34	0	0.3s	-3	1º	1º
47	Tmp	115	5311	12:13:18.12	12:13:17.07	0	1.1s	-11	4º	2º
48	Tmp	117	6518	12:15:18.16	12:15:17.49	0	0.7s	-7	5º	2º
49	Tmp	118	6909	12:15:58.31	12:15:56.70	0	1.6s	-16	5º	4º
50	Tmp	120	7702	12:17:20.78	12:17:22.24	0	1.5s	+15	4º	4º
51	Tmp	120	8376	12:18:28.18	12:18:28.01	0	0.2s	-2	1º	3º
52	Tmp	122	9079	12:19:50.26	12:19:49.06	0	1.2s	-12	3º	3º
53	Tmp	124	9502	12:20:41.23	12:20:41.47	0	0.2s	+2	2º	3º
54	Tmp	124	9910	12:21:24.43	12:21:23.53	0	0.9s	[-9]	3º	3º
55	Tmp	125	10582	12:23:01.97	12:23:03.60	0	1.6s	+16	3º	3º
56	Tmp	126	11580	12:25:40.04	12:25:40.48	0	0.4s	+4	3º	3º
57	Tmp	130	12308	12:27:26.33	12:27:25.90	0	0.4s	-4	4º	3º
58	Tmp	131	12967	12:29:15.68	12:29:17.17	0	1.5s	+15	3º	4º
59	Tmp	133	13810	12:30:51.72	12:30:51.66	0	0.1s	-1	1º	3º

PC	Tp	Trc	DistPC	Ideal	Passagem	Pen	Erro	Pontos	NoPC	AtePC
60	Tmp	136	14517	12:31:59.93	12:31:59.89	0	0.0s	0	2º	3º
61	Tmp	137	16120	12:34:02.40	12:34:01.71	0	0.7s	-7	5º	4º
62	Tmp	142	17616	12:36:27.22	12:36:26.87	0	0.4s	-4	4º	4º
63	Tmp	147	18970	12:38:55.71	12:38:55.76	0	0.1s	+1	2º	3º
64	Tmp	152	20136	12:41:16.64	12:41:16.30	0	0.3s	-3	4º	2º
65	Tmp	153	20656	12:42:17.99	12:42:17.73	0	0.3s	-3	4º	3º
66	Tmp	162	23797	12:48:18.80	12:48:28.11	0	9.3s	+93	2º	3º
67	Tmp	165	23916	12:48:39.02	12:48:59.20	0	20.2s	+202	1º	2º
68	Tmp	166	24102	12:49:01.00	12:49:26.33	0	25.3s	[+253]	2º	1º
69	Tmp	168	24305	12:49:32.07	12:49:52.40	0	20.3s	+203	1º	1º
70	Tmp	173	856	12:52:00.49	12:52:04.21	0	3.7s	+37	1º	1º
71	Tmp	175	1001	12:52:16.85	12:52:19.88	0	3.0s	+30	1º	1º
72	Tmp	183	3058	12:55:51.42	12:55:50.15	0	1.3s	-13	3º	1º
Etapa B	Num	31	Pen	0	PCZ	2	Total PP	707	PG	17

73	Tmp	191	1667	13:22:20.87	13:22:20.77	0	0.1s	-1	3º	3º
74	Tmp	193	2492	13:23:50.30	13:23:50.44	0	0.1s	+1	1º	1º
75	Tmp	195	3528	13:25:32.72	13:25:32.75	0	0.0s	0	1º	1º
76	Tmp	197	4054	13:26:28.81	13:26:28.66	0	0.2s	-2	2º	1º
77	Tmp	201	4597	13:27:50.81	13:27:50.75	0	0.1s	-1	1º	1º
78	Tmp	202	4870	13:28:18.38	13:28:18.40	0	0.0s	0	1º	1º
79	Tmp	203	5009	13:28:30.30	13:28:30.71	0	0.4s	+4	3º	1º
80	Tmp	207	6290	13:30:40.26	13:30:40.44	0	0.2s	+2	4º	1º
81	Tmp	210	7010	13:32:00.45	13:32:00.40	0	0.1s	-1	1º	1º
82	Tmp	212	7742	13:33:12.30	13:33:15.17	0	2.9s	+29	4º	1º
83	Tmp	217	9329	13:35:45.78	13:35:47.92	0	2.1s	+21	4º	1º
84	Tmp	220	9888	13:36:41.83	13:36:41.44	0	0.4s	-4	4º	1º
85	Tmp	228	11818	13:40:17.96	13:40:17.77	0	0.2s	-2	2º	1º
86	Tmp	230	13589	13:43:12.46	13:43:12.13	0	0.3s	-3	5º	1º
87	Tmp	235	15094	13:46:01.49	13:46:01.25	0	0.2s	-2	4º	1º
88	Tmp	239	15732	13:47:04.63	13:47:04.79	0	0.2s	+2	1º	1º
90	Tmp	244	16045	13:47:50.40	13:48:00.89	0	10.5s	+105	2º	1º
91	Tmp	247	17683	13:50:38.41	13:50:32.68	0	5.7s	-57	5º	4º
92	Tmp	249	18264	13:51:41.37	13:51:39.15	0	2.2s	-22	4º	4º
93	Tmp	249	18716	13:52:26.57	13:52:25.61	0	1.0s	[-10]	2º	3º
94	Tmp	254	20436	13:56:12.61	13:56:10.47	0	2.1s	-21	5º	5º
95	Tmp	256	21647	13:58:27.42	13:58:24.70	0	2.7s	-27	5º	5º
96	Tmp	258	22886	14:00:26.84	14:00:22.51	0	4.3s	-43	5º	5º
97	Tmp	263	25065	14:04:24.30	14:04:45.82	0	21.5s	[+215]	5º	5º
98	Tmp	264	25179	14:04:41.18	14:04:55.14	0	14.0s	+140	4º	4º
99	Tmp	267	25981	14:06:31.10	14:06:30.57	0	0.5s	-5	3º	4º
Etapa C	Num	31	Pen	0	PCZ	2	Total PP	495	PG	13

1º	2	A PP	345	3º	B PP	707	1º	C PP	495	4º	Tot PP	1547	Col.	1º
-----------	----------	-------------	------------	-----------	-------------	------------	-----------	-------------	------------	-----------	---------------	-------------	-------------	-----------



PC	Tp	Trc	DistPC	Ideal	Passagem	Pen	Erro	Pontos	NoPC	AtePC
N u m	32	32 / Ronaldo / Junia								
		Cat / NL / Largada Turismo / 3 / 09:17:00								
		4º								
PC	Tp	Trc	DistPC	Ideal	Passagem	Pen	Erro	Pontos	NoPC	AtePC
1	Tmp	5	1117	9:53:40.93	9:54:03.13	0	22.2s	[+222]	4º	4º
2	Tmp	8	1473	9:54:24.02	9:54:40.84	0	16.8s	[+168]	4º	4º
3	Tmp	12	1769	9:54:55.64	9:55:09.31	0	13.7s	+137	4º	4º
4	Tmp	14	2219	9:55:38.63	9:55:43.74	0	5.1s	+51	4º	4º
5	Tmp	16	2674	9:56:34.28	9:56:22.31	0	12.0s	-120	4º	4º
6	Tmp	17	3343	9:57:34.54	9:57:19.08	0	15.5s	-155	4º	4º
7	Tmp	20	4595	10:00:15.92	10:00:10.73	0	5.2s	-52	4º	4º
8	Tmp	23	5323	10:02:10.43	10:01:31.25	0	39.2s	-392	4º	4º
9	Tmp	24	5384	10:02:20.49	10:02:18.32	0	2.2s	-22	3º	4º
10	Tmp	26	486	10:23:24.30	10:23:23.82	0	0.5s	-5	4º	4º
11	Tmp	26	1037	10:24:24.41	10:24:32.39	0	8.0s	+80	4º	4º
12	Tmp	27	2092	10:26:06.86	10:26:07.58	0	0.7s	+7	4º	4º
13	Tmp	31	2736	10:27:24.70	10:27:25.86	0	1.2s	+12	4º	4º
14	Tmp	32	3386	10:28:34.79	10:28:34.79	0	0.0s	0	1º	4º
15	Tmp	37	4608	10:31:08.78	10:31:08.85	0	0.1s	+1	2º	4º
16	Tmp	39	5354	10:32:52.93	10:32:52.79	0	0.1s	-1	1º	4º
17	Tmp	42	417	10:54:20.02	10:54:19.80	0	0.2s	-2	1º	4º
18	Tmp	43	941	10:55:38.62	10:55:38.76	0	0.1s	+1	1º	4º
19	Tmp	45	1729	10:57:06.17	10:57:06.20	0	0.0s	0	1º	4º
20	Tmp	50	3167	10:59:59.83	10:59:59.33	0	0.5s	-5	3º	4º
21	Tmp	51	3454	11:00:36.79	11:00:36.02	0	0.8s	-8	4º	4º
22	Tmp	52	3576	11:00:53.32	11:00:52.91	0	0.4s	-4	3º	4º
23	Tmp	54	4440	11:02:24.66	11:02:24.80	0	0.1s	+1	1º	4º
24	Tmp	56	5223	11:03:58.41	11:04:01.99	0	3.6s	+36	4º	4º
25	Tmp	58	5422	11:04:33.51	11:04:32.48	0	1.0s	[-10]	3º	4º
26	Tmp	60	5511	11:04:48.16	11:04:48.70	0	0.5s	+5	1º	4º
27	Tmp	64	180	11:05:44.93	11:05:44.07	0	0.9s	-9	3º	4º
28	Tmp	65	840	11:06:47.38	11:06:45.56	0	1.8s	-18	3º	4º
29	Tmp	70	2722	11:10:14.58	11:10:13.63	0	1.0s	[-10]	5º	4º
30	Tmp	72	280	11:12:29.32	11:12:28.11	0	1.2s	-12	5º	4º
31	Tmp	76	1240	11:13:54.86	11:13:54.36	0	0.5s	-5	5º	4º
32	Tmp	78	2080	11:15:30.56	11:15:29.64	0	0.9s	-9	3º	4º
33	Tmp	80	2910	11:18:06.84	11:18:06.57	0	0.3s	-3	3º	4º
34	Tmp	80	3363	11:18:56.26	11:18:56.22	0	0.0s	0	1º	4º
35	Tmp	84	4626	11:20:59.70	11:21:02.48	0	2.8s	+28	5º	4º
36	Tmp	86	5021	11:21:46.48	11:21:46.03	0	0.5s	-5	3º	4º
37	Tmp	88	5285	11:22:29.20	11:22:29.19	0	0.0s	0	1º	4º
38	Tmp	90	5886	11:23:35.28	11:23:35.21	0	0.1s	-1	2º	4º
39	Tmp	97	6994	11:28:08.77	11:28:07.97	0	0.8s	-8	5º	4º
40	Tmp	99	7397	11:28:54.17	11:28:54.30	0	0.1s	+1	3º	4º
41	Tmp	103	8237	11:30:33.56	11:30:34.74	0	1.2s	+12	5º	4º
42	Tmp	107	8883	11:31:56.80	11:31:56.04	0	0.8s	-8	4º	4º
43	Tmp	107	9424	11:32:52.45	11:32:52.29	0	0.2s	-2	2º	4º
Etapa A	Num	32	Pen	0	PCZ	4	Total PP	1218	PG	13
44	Tmp	111	2870	12:10:24.81	12:10:24.17	0	0.6s	-6	5º	5º
45	Tmp	113	3907	12:12:01.18	12:12:00.41	0	0.8s	-8	3º	4º
46	Tmp	114	4630	12:13:06.61	12:13:06.23	0	0.4s	-4	3º	4º
47	Tmp	115	5311	12:14:18.12	12:14:17.16	0	1.0s	[-10]	3º	4º
48	Tmp	117	6518	12:16:18.16	12:16:17.81	0	0.4s	-4	4º	5º
49	Tmp	118	6909	12:16:58.31	12:16:57.25	0	1.1s	-11	4º	5º
50	Tmp	120	7702	12:18:20.78	12:18:21.52	0	0.7s	+7	2º	5º
51	Tmp	120	8376	12:19:28.18	12:19:31.14	0	3.0s	+30	5º	5º
52	Tmp	122	9079	12:20:50.26	12:21:06.58	0	16.3s	+163	5º	5º
53	Tmp	124	9502	12:21:41.23	12:22:02.64	0	21.4s	+214	5º	5º
54	Tmp	124	9910	12:22:24.43	12:22:45.38	0	21.0s	+210	5º	5º
55	Tmp	125	10582	12:24:01.97	12:24:04.60	0	2.6s	+26	5º	5º
56	Tmp	126	11580	12:26:40.04	12:26:38.77	0	1.3s	-13	5º	5º
57	Tmp	130	12308	12:28:26.33	12:28:24.37	0	2.0s	-20	5º	5º
58	Tmp	131	12967	12:30:15.68	12:30:14.22	0	1.5s	-15	2º	5º
59	Tmp	133	13810	12:31:51.72	12:31:52.41	0	0.7s	+7	3º	5º

PC	Tp	Trc	DistPC	Ideal	Passagem	Pen	Erro	Pontos	NoPC	AtePC
60	Tmp	136	14517	12:32:59.93	12:32:59.55	0	0.4s	-4	5º	5º
61	Tmp	137	16120	12:35:02.40	12:35:01.97	0	0.4s	-4	3º	5º
62	Tmp	142	17616	12:37:27.22	12:37:26.81	0	0.4s	-4	3º	5º
63	Tmp	147	18970	12:39:55.71	12:39:57.12	0	1.4s	+14	5º	5º
64	Tmp	152	20136	12:42:16.64	12:42:16.43	0	0.2s	-2	2º	5º
65	Tmp	153	20656	12:43:17.99	12:43:17.79	0	0.2s	-2	3º	5º
66	Tmp	162	23797	12:49:18.80	12:51:03.20	0	1m44s	+1044	5º	5º
67	Tmp	165	23916	12:49:39.02	12:51:36.23	0	1m57s	+1172	5º	5º
68	Tmp	166	24102	12:50:01.00	12:50:00.77	0	0.2s	-2	1º	5º
69	Tmp	168	24305	12:50:32.07	12:52:40.22	0	2m08s	[+1282]	5º	5º
70	Tmp	173	856	12:53:00.49	12:53:55.12	0	54.6s	+546	5º	5º
71	Tmp	175	1001	12:53:16.85	12:54:14.33	0	57.5s	+575	5º	5º
72	Tmp	183	3058	12:56:51.42	12:56:49.87	0	1.6s	-16	5º	5º

Etapa B	Num	32	Pen	0	PCZ	0	Total PP	4123	PG	12
----------------	------------	-----------	------------	----------	------------	----------	-----------------	-------------	-----------	-----------

PC	Tp	Trc	DistPC	Ideal	Passagem	Pen	Erro	Pontos	NoPC	AtePC
73	Tmp	191	1667	13:23:20.87	13:23:20.75	0	0.1s	-1	2º	2º
74	Tmp	193	2492	13:24:50.30	13:24:50.68	0	0.4s	+4	2º	2º
75	Tmp	195	3528	13:26:32.72	13:26:32.85	0	0.1s	+1	2º	2º
76	Tmp	197	4054	13:27:28.81	13:27:29.70	0	0.9s	[+9]	4º	2º
77	Tmp	201	4597	13:28:50.81	13:28:51.10	0	0.3s	+3	2º	2º
78	Tmp	202	4870	13:29:18.38	13:29:17.56	0	0.8s	-8	5º	2º
79	Tmp	203	5009	13:29:30.30	13:29:30.38	0	0.1s	+1	1º	2º
80	Tmp	207	6290	13:31:40.26	13:31:39.85	0	0.4s	-4	5º	3º
81	Tmp	210	7010	13:33:00.45	13:33:01.59	0	1.1s	+11	5º	3º
82	Tmp	212	7742	13:34:12.30	13:34:16.82	0	4.5s	+45	5º	3º
83	Tmp	217	9329	13:36:45.78	13:36:46.58	0	0.8s	+8	1º	3º
84	Tmp	220	9888	13:37:41.83	13:37:41.86	0	0.0s	0	1º	2º
85	Tmp	228	11818	13:41:17.96	13:41:17.84	0	0.1s	-1	1º	2º
86	Tmp	230	13589	13:44:12.46	13:44:12.68	0	0.2s	+2	3º	2º
87	Tmp	235	15094	13:47:01.49	13:47:01.56	0	0.1s	+1	3º	2º
88	Tmp	239	15732	13:48:04.63	13:48:09.64	0	5.0s	+50	5º	4º
90	Tmp	244	16045	13:48:50.40	13:49:09.44	0	19.0s	[+190]	3º	5º
91	Tmp	247	17683	13:51:38.41	13:51:37.69	0	0.7s	-7	4º	5º
92	Tmp	249	18264	13:52:41.37	13:52:39.49	0	1.9s	-19	3º	5º
93	Tmp	249	18716	13:53:26.57	13:53:26.66	0	0.1s	+1	1º	5º
94	Tmp	254	20436	13:57:12.61	13:57:12.19	0	0.4s	-4	3º	4º
95	Tmp	256	21647	13:59:27.42	13:59:27.25	0	0.2s	-2	1º	3º
96	Tmp	258	22886	14:01:26.84	14:01:27.72	0	0.9s	+9	4º	3º
97	Tmp	263	25065	14:05:24.30	14:05:31.65	0	7.4s	+74	3º	3º
98	Tmp	264	25179	14:05:41.18	14:05:41.23	0	0.1s	+1	1º	2º
99	Tmp	267	25981	14:07:31.10	14:07:31.38	0	0.3s	+3	2º	2º

Etapa C	Num	32	Pen	0	PCZ	1	Total PP	260	PG	15
----------------	------------	-----------	------------	----------	------------	----------	-----------------	------------	-----------	-----------

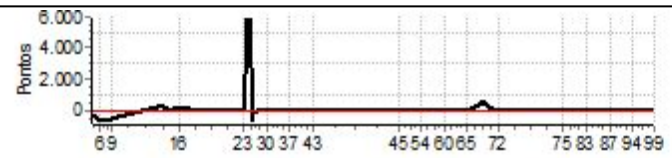
nº	3	A PP	1218	4º	B PP	4123	5º	C PP	260	2º	Tot PP	5601	Col.	4º
-----------	----------	-------------	-------------	-----------	-------------	-------------	-----------	-------------	------------	-----------	---------------	-------------	-------------	-----------



Performance Individual

PC	Tp	Trc	DistPC	Ideal	Passagem	Pen	Erro	Pontos	NoPC	AtePC
N u m	33	33 / Eduardo Bonome / Andre Xavier								
		Cat / NL / Largada Turismo / 4 / 09:18:00								
PC	Tp	Trc	DistPC	Ideal	Passagem	Pen	Erro	Pontos	NoPC	AtePC
1	Tmp	5	1117	9:54:40.93	9:54:09.63	0	31.3s	-313	5°	5°
2	Tmp	8	1473	9:55:24.02	9:54:43.05	0	41.0s	-410	5°	5°
3	Tmp	12	1769	9:55:55.64	9:55:10.95	0	44.7s	-447	5°	5°
4	Tmp	14	2219	9:56:38.63	9:55:45.18	0	53.5s	-535	5°	5°
5	Tmp	16	2674	9:57:34.28	9:56:33.07	0	1m01s	-612	5°	5°
6	Tmp	17	3343	9:58:34.54	9:57:32.29	0	1m02s	-623	5°	5°
7	Tmp	20	4595	10:01:15.92	10:00:15.70	0	1m00s	-602	5°	5°
8	Tmp	23	5323	10:03:10.43	10:02:10.69	0	59.7s	-597	5°	5°
9	Tmp	24	5384	10:03:20.49	10:02:22.17	0	58.3s	-583	5°	5°
10	Tmp	26	486	10:24:24.30	10:24:42.35	0	18.1s	[+181]	5°	5°
11	Tmp	26	1037	10:25:24.41	10:25:54.55	0	30.1s	[+301]	5°	5°
12	Tmp	27	2092	10:27:06.86	10:27:17.64	0	10.8s	+108	5°	5°
13	Tmp	31	2736	10:28:24.70	10:28:33.03	0	8.3s	+83	5°	5°
14	Tmp	32	3386	10:29:34.79	10:29:34.90	0	0.1s	+1	2°	5°
15	Tmp	37	4608	10:32:08.78	10:32:17.05	0	8.3s	+83	5°	5°
16	Tmp	39	5354	10:33:52.93	10:34:01.42	0	8.5s	+85	5°	5°
17	Tmp	42	417	10:55:20.02	10:55:19.68	0	0.3s	-3	2°	5°
18	Tmp	43	941	10:56:38.62	10:56:38.94	0	0.3s	+3	5°	5°
19	Tmp	45	1729	10:58:06.17	10:58:06.41	0	0.2s	+2	5°	5°
20	Tmp	50	3167	11:00:59.83	11:00:59.71	0	0.1s	-1	2°	5°
21	Tmp	51	3454	11:01:36.79	11:01:38.19	0	1.4s	+14	5°	5°
22	Tmp	52	3576	11:01:53.32	11:01:53.12	0	0.2s	-2	2°	5°
23	Tmp	54	4440	11:03:24.66	11:03:25.45	0	0.8s	+8	5°	5°
24	Tmp	56	5223	11:04:58.41	---	0		+6000	5°	5°
25	Tmp	58	5422	11:05:33.51	---	0		+6000	5°	5°
26	Tmp	60	5511	11:05:48.16	---	0		+6000	5°	5°
27	Tmp	64	180	11:06:44.93	11:05:40.91	0	1m04s	-640	5°	5°
28	Tmp	65	840	11:07:47.38	11:07:38.60	0	8.8s	-88	5°	5°
29	Tmp	70	2722	11:11:14.58	11:11:15.35	0	0.8s	+8	2°	5°
30	Tmp	72	280	11:13:29.32	11:13:28.31	0	1.0s	[-10]	4°	5°
31	Tmp	76	1240	11:14:54.86	11:14:54.54	0	0.3s	-3	2°	5°
32	Tmp	78	2080	11:16:30.56	11:16:29.85	0	0.7s	-7	2°	5°
33	Tmp	80	2910	11:19:06.84	11:19:08.05	0	1.2s	+12	5°	5°
34	Tmp	80	3363	11:19:56.26	11:19:57.46	0	1.2s	+12	5°	5°
35	Tmp	84	4626	11:21:59.70	11:22:01.90	0	2.2s	+22	4°	5°
36	Tmp	86	5021	11:22:46.48	11:22:46.16	0	0.3s	-3	2°	5°
37	Tmp	88	5285	11:23:29.20	11:23:29.98	0	0.8s	+8	5°	5°
38	Tmp	90	5886	11:24:35.28	11:24:37.59	0	2.3s	+23	5°	5°
39	Tmp	97	6994	11:29:08.77	11:29:09.52	0	0.8s	+8	4°	5°
40	Tmp	99	7397	11:29:54.17	11:29:55.17	0	1.0s	[+10]	5°	5°
41	Tmp	103	8237	11:31:33.56	11:31:34.40	0	0.8s	+8	3°	5°
42	Tmp	107	8883	11:32:56.80	11:32:57.13	0	0.3s	+3	2°	5°
43	Tmp	107	9424	11:33:52.45	11:33:53.17	0	0.7s	+7	5°	5°
Etapa A	Num	33	Pen	0	PCZ	0	Total PP	23967	PG	12
44	Tmp	111	2870	12:11:24.81	12:11:24.57	0	0.2s	-2	3°	3°
45	Tmp	113	3907	12:13:01.18	12:13:01.10	0	0.1s	-1	1°	2°
46	Tmp	114	4630	12:14:06.61	12:14:06.14	0	0.5s	-5	4°	2°
47	Tmp	115	5311	12:15:18.12	12:15:17.08	0	1.0s	[-10]	2°	1°
48	Tmp	117	6518	12:17:18.16	12:17:17.86	0	0.3s	-3	3°	1°
49	Tmp	118	6909	12:17:58.31	12:17:57.43	0	0.9s	-9	3°	1°
50	Tmp	120	7702	12:19:20.78	12:19:22.50	0	1.7s	+17	5°	1°
51	Tmp	120	8376	12:20:28.18	12:20:28.79	0	0.6s	+6	3°	2°
52	Tmp	122	9079	12:21:50.26	12:21:49.65	0	0.6s	-6	1°	2°
53	Tmp	124	9502	12:22:41.23	12:22:41.39	0	0.2s	+2	1°	1°
54	Tmp	124	9910	12:23:24.43	12:23:24.26	0	0.2s	-2	1°	1°
55	Tmp	125	10582	12:25:01.97	12:25:03.88	0	1.9s	+19	4°	2°
56	Tmp	126	11580	12:27:40.04	12:27:41.02	0	1.0s	+10	4°	2°
57	Tmp	130	12308	12:29:26.33	12:29:26.17	0	0.2s	-2	2°	2°
58	Tmp	131	12967	12:31:15.68	12:31:17.77	0	2.1s	+21	4°	3°
59	Tmp	133	13810	12:32:51.72	12:32:52.87	0	1.2s	+12	5°	4°

PC	Tp	Trc	DistPC	Ideal	Passagem	Pen	Erro	Pontos	NoPC	AtePC				
60	Tmp	136	14517	12:33:59.93	12:34:00.22	0	0.3s	+3	4°	4°				
61	Tmp	137	16120	12:36:02.40	12:36:02.31	0	0.1s	-1	1°	3°				
62	Tmp	142	17616	12:38:27.22	12:38:27.19	0	0.0s	0	1°	2°				
63	Tmp	147	18970	12:40:55.71	12:40:56.90	0	1.2s	+12	4°	4°				
64	Tmp	152	20136	12:43:16.64	12:43:16.83	0	0.2s	+2	1°	4°				
65	Tmp	153	20656	12:44:17.99	12:44:18.46	0	0.5s	+5	5°	4°				
66	Tmp	162	23797	12:50:18.80	12:50:55.47	0	36.7s	+367	3°	4°				
67	Tmp	165	23916	12:50:39.02	12:51:25.99	0	47.0s	+470	2°	3°				
68	Tmp	166	24102	12:51:01.00	12:51:55.77	0	54.8s	[+548]	4°	3°				
69	Tmp	168	24305	12:51:32.07	12:52:17.19	0	45.1s	+451	2°	2°				
70	Tmp	173	856	12:54:00.49	12:54:04.90	0	4.4s	+44	2°	2°				
71	Tmp	175	1001	12:54:16.85	12:54:21.66	0	4.8s	+48	3°	2°				
72	Tmp	183	3058	12:57:51.42	12:57:51.92	0	0.5s	+5	2°	2°				
Etapa B	Num	33	Pen	0	PCZ	1	Total PP	1525	PG	15				
73	Tmp	191	1667	13:24:20.87	13:24:20.80	0	0.1s	-1	1°	1°				
74	Tmp	193	2492	13:25:50.30	13:25:51.30	0	1.0s	[+10]	5°	3°				
75	Tmp	195	3528	13:27:32.72	13:27:33.36	0	0.6s	+6	5°	3°				
76	Tmp	197	4054	13:28:28.81	13:28:29.53	0	0.7s	+7	3°	4°				
77	Tmp	201	4597	13:29:50.81	13:29:50.44	0	0.4s	-4	3°	4°				
78	Tmp	202	4870	13:30:18.38	13:30:18.82	0	0.4s	+4	4°	4°				
79	Tmp	203	5009	13:30:30.30	13:30:31.92	0	1.6s	+16	5°	4°				
80	Tmp	207	6290	13:32:40.26	13:32:40.43	0	0.2s	+2	3°	4°				
81	Tmp	210	7010	13:34:00.45	13:34:00.98	0	0.5s	+5	4°	4°				
82	Tmp	212	7742	13:35:12.30	13:35:14.90	0	2.6s	+26	2°	5°				
83	Tmp	217	9329	13:37:45.78	13:37:48.44	0	2.7s	[+27]	5°	5°				
84	Tmp	220	9888	13:38:41.83	13:38:41.97	0	0.1s	+1	3°	5°				
85	Tmp	228	11818	13:42:17.96	13:42:18.92	0	1.0s	+10	4°	5°				
86	Tmp	230	13589	13:45:12.46	13:45:12.39	0	0.1s	-1	2°	5°				
87	Tmp	235	15094	13:48:01.49	13:48:01.60	0	0.1s	+1	2°	5°				
88	Tmp	239	15732	13:49:04.63	13:49:05.92	0	1.3s	+13	3°	5°				
90	Tmp	244	16045	13:49:50.40	13:49:51.93	0	1.5s	+15	1°	3°				
91	Tmp	247	17683	13:52:38.41	13:52:39.15	0	0.7s	+7	3°	2°				
92	Tmp	249	18264	13:53:41.37	13:53:42.25	0	0.9s	+9	2°	2°				
93	Tmp	249	18716	13:54:26.57	13:54:27.85	0	1.3s	+13	3°	1°				
94	Tmp	254	20436	13:58:12.61	13:58:12.39	0	0.2s	-2	2°	1°				
95	Tmp	256	21647	14:00:27.42	14:00:26.12	0	1.3s	-13	2°	1°				
96	Tmp	258	22886	14:02:26.84	14:02:27.31	0	0.5s	+5	1°	1°				
97	Tmp	263	25065	14:06:24.30	14:06:26.47	0	2.2s	+22	1°	1°				
98	Tmp	264	25179	14:06:41.18	14:06:42.39	0	1.2s	+12	3°	1°				
99	Tmp	267	25981	14:08:31.10	14:08:31.91	0	0.8s	+8	4°	1°				
Etapa C	Num	33	Pen	0	PCZ	0	Total PP	203	PG	17				
n°	4	A PP	23967	5°	B PP	1525	2°	C PP	203	1°	Tot PP	25695	Col.	5°



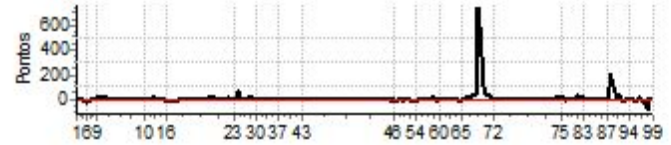
Performance Individual

PC	Tp	Trc	DistPC	Ideal	Passagem	Pen	Erro	Pontos	NoPC	AtePC
N u m	34	34 / Eduardo Pereira da Silva / Beatriz								
		Cat / NL / Largada Turismo / 5 / 09:19:00								
PC	Tp	Trc	DistPC	Ideal	Passagem	Pen	Erro	Pontos	NoPC	AtePC
1	Tmp	5	1117	9:55:40.93	9:55:41.98	0	1.1s	[+11]	3°	3°
2	Tmp	8	1473	9:56:24.02	9:56:23.96	0	0.1s	-1	1°	2°
3	Tmp	12	1769	9:56:55.64	9:56:55.75	0	0.1s	+1	1°	1°
4	Tmp	14	2219	9:57:38.63	9:57:37.97	0	0.7s	-7	2°	1°
5	Tmp	16	2674	9:58:34.28	9:58:32.57	0	1.7s	-17	2°	2°
6	Tmp	17	3343	9:59:34.54	9:59:31.52	0	3.0s	-30	2°	2°
7	Tmp	20	4595	10:02:15.92	10:02:15.27	0	0.7s	-7	2°	2°
8	Tmp	23	5323	10:04:10.43	10:04:09.59	0	0.8s	[-8]	2°	2°
9	Tmp	24	5384	10:04:20.49	10:04:21.12	0	0.6s	+6	1°	2°
10	Tmp	26	486	10:25:24.30	10:25:24.54	0	0.2s	+2	2°	2°
11	Tmp	26	1037	10:26:24.41	10:26:24.37	0	0.0s	0	1°	2°
12	Tmp	27	2092	10:28:06.86	10:28:07.03	0	0.2s	+2	2°	2°
13	Tmp	31	2736	10:29:24.70	10:29:25.36	0	0.7s	+7	2°	2°
14	Tmp	32	3386	10:30:34.79	10:30:35.23	0	0.4s	+4	4°	2°
15	Tmp	37	4608	10:33:08.78	10:33:08.66	0	0.1s	-1	1°	2°
16	Tmp	39	5354	10:34:52.93	10:34:52.02	0	0.9s	[-9]	2°	2°
17	Tmp	42	417	10:56:20.02	10:56:20.56	0	0.5s	+5	4°	2°
18	Tmp	43	941	10:57:38.62	10:57:38.41	0	0.2s	-2	3°	2°
19	Tmp	45	1729	10:59:06.17	10:59:06.23	0	0.1s	+1	2°	2°
20	Tmp	50	3167	11:01:59.83	11:01:59.92	0	0.1s	+1	1°	2°
21	Tmp	51	3454	11:02:36.79	11:02:37.51	0	0.7s	+7	3°	2°
22	Tmp	52	3576	11:02:53.32	11:02:53.50	0	0.2s	+2	1°	2°
23	Tmp	54	4440	11:04:24.66	11:04:24.97	0	0.3s	+3	4°	2°
24	Tmp	56	5223	11:05:58.41	11:05:58.02	0	0.4s	-4	2°	2°
25	Tmp	58	5422	11:06:33.51	11:06:32.84	0	0.7s	-7	2°	2°
26	Tmp	60	5511	11:06:48.16	11:06:54.21	0	6.1s	[+61]	4°	1°
27	Tmp	64	180	11:07:44.93	11:07:44.83	0	0.1s	-1	1°	1°
28	Tmp	65	840	11:08:47.38	11:08:47.23	0	0.2s	-2	1°	1°
29	Tmp	70	2722	11:12:14.58	11:12:15.32	0	0.7s	+7	1°	1°
30	Tmp	72	280	11:14:29.32	11:14:28.92	0	0.4s	-4	1°	1°
31	Tmp	76	1240	11:15:54.86	11:15:54.87	0	0.0s	0	1°	1°
32	Tmp	78	2080	11:17:30.56	11:17:30.16	0	0.4s	-4	1°	1°
33	Tmp	80	2910	11:20:06.84	11:20:06.63	0	0.2s	-2	2°	1°
34	Tmp	80	3363	11:20:56.26	11:20:56.42	0	0.2s	+2	2°	1°
35	Tmp	84	4626	11:22:59.70	11:22:59.36	0	0.3s	-3	2°	1°
36	Tmp	86	5021	11:23:46.48	11:23:46.25	0	0.2s	-2	1°	1°
37	Tmp	88	5285	11:24:29.20	11:24:28.96	0	0.2s	-2	3°	1°
38	Tmp	90	5886	11:25:35.28	11:25:35.00	0	0.3s	-3	3°	1°
39	Tmp	97	6994	11:30:08.77	11:30:08.61	0	0.2s	-2	3°	1°
40	Tmp	99	7397	11:30:54.17	11:30:54.04	0	0.1s	-1	2°	1°
41	Tmp	103	8237	11:32:33.56	11:32:33.43	0	0.1s	-1	1°	1°
42	Tmp	107	8883	11:33:56.80	11:33:56.63	0	0.2s	-2	1°	1°
43	Tmp	107	9424	11:34:52.45	11:34:51.98	0	0.5s	-5	4°	1°
Etapa A	Num	34	Pen	0	PCZ	2	Total PP	160	PG	17
44	Tmp	111	2870	12:12:24.81	12:12:24.19	0	0.6s	-6	4°	4°
45	Tmp	113	3907	12:14:01.18	12:14:00.05	0	1.1s	-11	5°	5°
46	Tmp	114	4630	12:15:06.61	12:15:06.26	0	0.4s	-4	2°	5°
47	Tmp	115	5311	12:16:18.12	12:16:17.09	0	1.0s	[-10]	1°	5°
48	Tmp	117	6518	12:18:18.16	12:18:18.33	0	0.2s	+2	2°	4°
49	Tmp	118	6909	12:18:58.31	12:18:57.45	0	0.9s	-9	2°	3°
50	Tmp	120	7702	12:20:20.78	12:20:20.69	0	0.1s	-1	1°	3°
51	Tmp	120	8376	12:21:28.18	12:21:27.51	0	0.7s	-7	4°	4°
52	Tmp	122	9079	12:22:50.26	12:22:48.94	0	1.3s	-13	4°	4°
53	Tmp	124	9502	12:23:41.23	12:23:40.26	0	1.0s	-10	3°	4°
54	Tmp	124	9910	12:24:24.43	12:24:22.83	0	1.6s	-16	4°	4°
55	Tmp	125	10582	12:26:01.97	12:26:02.04	0	0.1s	+1	1°	4°
56	Tmp	126	11580	12:28:40.04	12:28:40.07	0	0.0s	0	1°	4°
57	Tmp	130	12308	12:30:26.33	12:30:26.55	0	0.2s	+2	1°	4°
58	Tmp	131	12967	12:32:15.68	12:32:17.11	0	1.4s	+14	1°	2°
59	Tmp	133	13810	12:33:51.72	12:33:50.53	0	1.2s	-12	4°	2°

PC	Tp	Trc	DistPC	Ideal	Passagem	Pen	Erro	Pontos	NoPC	AtePC
60	Tmp	136	14517	12:34:59.93	12:34:59.89	0	0.0s	0	1°	2°
61	Tmp	137	16120	12:37:02.40	12:37:01.82	0	0.6s	-6	4°	2°
62	Tmp	142	17616	12:39:27.22	12:39:26.88	0	0.3s	-3	2°	3°
63	Tmp	147	18970	12:41:55.71	12:41:55.73	0	0.0s	0	1°	2°
64	Tmp	152	20136	12:44:16.64	12:44:15.72	0	0.9s	-9	5°	3°
65	Tmp	153	20656	12:45:17.99	12:45:18.12	0	0.1s	+1	1°	2°
66	Tmp	162	23797	12:51:18.80	12:51:23.01	0	4.2s	+42	1°	2°
67	Tmp	165	23916	12:51:39.02	12:52:55.11	0	1m16s	[+761]	4°	1°
68	Tmp	166	24102	12:52:01.00	12:53:16.79	0	1m15s	+758	5°	2°
69	Tmp	168	24305	12:52:32.07	12:53:36.51	0	1m04s	+644	3°	3°
70	Tmp	173	856	12:55:00.49	12:55:06.01	0	5.5s	+55	4°	3°
71	Tmp	175	1001	12:55:16.85	12:55:21.85	0	5.0s	+50	4°	3°
72	Tmp	183	3058	12:58:51.42	12:58:51.19	0	0.2s	-2	1°	3°
Etapa B	Num	34	Pen	0	PCZ	3	Total PP	1678	PG	14

73	Tmp	191	1667	13:25:20.87	13:25:21.06	0	0.2s	+2	4°	4°
74	Tmp	193	2492	13:26:50.30	13:26:50.97	0	0.7s	+7	4°	4°
75	Tmp	195	3528	13:28:32.72	13:28:33.25	0	0.5s	+5	4°	5°
76	Tmp	197	4054	13:29:28.81	13:29:29.85	0	1.0s	[+10]	5°	5°
77	Tmp	201	4597	13:30:50.81	13:30:49.12	0	1.7s	-17	5°	5°
78	Tmp	202	4870	13:31:18.38	13:31:18.01	0	0.4s	-4	3°	5°
79	Tmp	203	5009	13:31:30.30	13:31:30.08	0	0.2s	-2	2°	5°
80	Tmp	207	6290	13:33:40.26	13:33:40.28	0	0.0s	0	1°	5°
81	Tmp	210	7010	13:35:00.45	13:35:00.89	0	0.4s	+4	3°	5°
82	Tmp	212	7742	13:36:12.30	13:36:15.06	0	2.8s	+28	3°	4°
83	Tmp	217	9329	13:38:45.78	13:38:47.16	0	1.4s	+14	2°	4°
84	Tmp	220	9888	13:39:41.83	13:39:41.70	0	0.1s	-1	2°	4°
85	Tmp	228	11818	13:43:17.96	13:43:17.59	0	0.4s	-4	3°	4°
86	Tmp	230	13589	13:46:12.46	13:46:12.80	0	0.3s	+3	4°	4°
87	Tmp	235	15094	13:49:01.49	13:49:01.50	0	0.0s	0	1°	4°
88	Tmp	239	15732	13:50:04.63	13:50:05.79	0	1.2s	+12	2°	2°
90	Tmp	244	16045	13:50:50.40	13:51:10.37	0	20.0s	[+200]	4°	2°
91	Tmp	247	17683	13:53:38.41	13:53:39.14	0	0.7s	+7	2°	1°
92	Tmp	249	18264	13:54:41.37	13:54:43.82	0	2.5s	+25	5°	3°
93	Tmp	249	18716	13:55:26.57	13:55:24.97	0	1.6s	-16	4°	2°
94	Tmp	254	20436	13:59:12.61	13:59:12.48	0	0.1s	-1	1°	2°
95	Tmp	256	21647	14:01:27.42	14:01:25.54	0	1.9s	-19	3°	2°
96	Tmp	258	22886	14:03:26.84	14:03:27.41	0	0.6s	+6	2°	2°
97	Tmp	263	25065	14:07:24.30	14:07:16.23	0	8.1s	-81	4°	4°
98	Tmp	264	25179	14:07:41.18	14:07:40.67	0	0.5s	-5	2°	3°
99	Tmp	267	25981	14:09:31.10	14:09:30.79	0	0.3s	-3	1°	3°
Etapa C	Num	34	Pen	0	PCZ	2	Total PP	266	PG	14

n°	5	A PP	160	1°	B PP	1678	3°	C PP	266	3°	Tot PP	2104	Col.	2°
-----------	----------	-------------	------------	-----------	-------------	-------------	-----------	-------------	------------	-----------	---------------	-------------	-------------	-----------



Performance Individual

PC	Tp	Trc	DistPC	Ideal	Passagem	Pen	Erro	Pontos	NoPC	AtePC
N u m	35	35 / Ibson Mol / Claudia Helena Belotte								
		Cat / NL / Largada / Ligth / 1 / 09:30:00								
		Pajero Tr4								
PC	Tp	Trc	DistPC	Ideal	Passagem	Pen	Erro	Pontos	NoPC	AtePC
1	Tmp	5	1117	10:06:48.59	10:06:48.53	0	0.1s	-1	2°	2°
2	Tmp	8	1473	10:07:35.01	10:07:35.17	0	0.2s	+2	2°	2°
3	Tmp	12	1769	10:08:08.31	10:08:08.03	0	0.3s	-3	2°	1°
4	Tmp	14	2219	10:08:55.94	10:08:56.50	0	0.6s	+6	4°	1°
5	Tmp	16	2674	10:09:57.98	10:09:54.17	0	3.8s	-38	7°	4°
6	Tmp	17	3343	10:11:04.44	10:11:03.60	0	0.8s	[-8]	2°	4°
7	Tmp	20	4595	10:14:01.15	10:14:01.98	0	0.8s	+8	2°	2°
8	Tmp	23	5323	10:16:10.09	10:16:07.05	0	3.0s	-30	3°	3°
9	Tmp	24	5384	10:16:21.34	10:16:30.41	0	9.1s	[+91]	7°	1°
10	Tmp	26	486	10:37:29.47	10:37:25.82	0	3.7s	-37	10°	2°
11	Tmp	26	1037	10:38:33.46	10:38:33.40	0	0.1s	-1	2°	2°
12	Tmp	27	2092	10:40:24.40	10:40:26.63	0	2.2s	+22	4°	2°
13	Tmp	31	2736	10:41:49.42	10:41:50.73	0	1.3s	+13	4°	2°
14	Tmp	32	3386	10:43:06.20	10:43:05.87	0	0.3s	-3	4°	2°
15	Tmp	37	4608	10:45:52.36	10:45:52.56	0	0.2s	+2	2°	1°
16	Tmp	39	5354	10:47:45.45	10:47:43.99	0	1.5s	-15	7°	1°
17	Tmp	42	417	11:09:20.98	11:09:20.28	0	0.7s	-7	8°	1°
18	Tmp	43	941	11:10:46.72	11:10:46.34	0	0.4s	-4	2°	1°
19	Tmp	45	1729	11:12:20.50	11:12:21.28	0	0.8s	+8	3°	1°
20	Tmp	50	3167	11:15:32.42	11:15:30.70	0	1.7s	-17	5°	1°
21	Tmp	51	3454	11:16:12.32	11:16:11.83	0	0.5s	-5	2°	1°
22	Tmp	52	3576	11:16:30.23	11:16:32.09	0	1.9s	+19	4°	1°
23	Tmp	54	4440	11:18:09.50	11:18:07.40	0	2.1s	-21	6°	1°
27	Tmp	58	180	11:20:06.98	11:20:09.68	0	2.7s	+27	4°	1°
28	Tmp	59	840	11:21:15.56	11:21:08.93	0	6.6s	-66	7°	2°
29	Tmp	64	2722	11:25:07.44	11:25:01.62	0	5.8s	-58	9°	3°
30	Tmp	66	280	11:27:35.57	11:27:34.67	0	0.9s	[-9]	5°	3°
31	Tmp	70	1240	11:29:10.02	11:29:05.83	0	4.2s	-42	8°	3°
32	Tmp	72	2080	11:30:55.39	11:30:52.33	0	3.1s	-31	10°	3°
33	Tmp	75	2910	11:33:52.66	11:33:51.08	0	1.6s	-16	6°	3°
34	Tmp	75	3363	11:34:45.27	11:34:43.90	0	1.4s	-14	5°	3°
35	Tmp	79	4626	11:37:01.72	11:37:04.16	0	2.4s	+24	5°	3°
36	Tmp	81	5021	11:37:53.57	11:37:53.54	0	0.0s	0	1°	3°
37	Tmp	83	5285	11:38:41.81	11:38:42.15	0	0.3s	+3	3°	3°
38	Tmp	85	5886	11:39:55.59	11:39:54.03	0	1.6s	-16	6°	3°
39	Tmp	92	6994	11:45:18.03	11:45:24.92	0	6.9s	+69	9°	3°
40	Tmp	94	7397	11:46:07.12	11:46:15.14	0	8.0s	[+80]	9°	3°
41	Tmp	98	8237	11:47:53.24	11:48:00.79	0	7.6s	+76	9°	3°
42	Tmp	102	8883	11:49:26.90	11:49:26.66	0	0.2s	-2	2°	3°
43	Tmp	102	9424	11:50:29.73	11:50:31.04	0	1.3s	+13	5°	3°

Etapa A	Num 35	Pen 0	PCZ 1	Total PP 719	PG 14
----------------	---------------	--------------	--------------	---------------------	--------------

PC	Tp	Trc	DistPC	Ideal	Passagem	Pen	Erro	Pontos	NoPC	AtePC
44	Tmp	106	2870	12:28:22.38	12:28:22.29	0	0.1s	-1	1°	1°
45	Tmp	108	3907	12:30:09.91	12:30:09.55	0	0.4s	-4	4°	8°
46	Tmp	109	4630	12:31:22.69	12:31:24.22	0	1.5s	+15	7°	2°
47	Tmp	110	5311	12:32:39.31	12:32:41.98	0	2.7s	+27	8°	3°
48	Tmp	112	6518	12:34:49.18	12:34:52.35	0	3.2s	+32	9°	6°
49	Tmp	113	6909	12:35:33.58	12:35:34.90	0	1.3s	+13	5°	5°
50	Tmp	115	7702	12:37:06.83	12:37:07.92	0	1.1s	+11	4°	3°
51	Tmp	115	8376	12:38:22.66	12:38:24.13	0	1.5s	+15	7°	2°
52	Tmp	117	9079	12:39:51.61	12:39:51.80	0	0.2s	+2	2°	2°
53	Tmp	119	9502	12:40:46.61	12:40:43.48	0	3.1s	-31	6°	2°
54	Tmp	119	9910	12:41:35.57	12:41:33.31	0	2.3s	-23	2°	2°
55	Tmp	120	10582	12:43:23.63	12:43:21.88	0	1.8s	-18	2°	2°
56	Tmp	121	11580	12:46:17.08	12:46:19.16	0	2.1s	+21	5°	2°
57	Tmp	125	12308	12:48:12.88	12:48:11.15	0	1.7s	-17	5°	2°
58	Tmp	126	12967	12:50:13.45	12:50:15.13	0	1.7s	+17	4°	2°
59	Tmp	128	13810	12:51:56.11	12:51:56.09	0	0.0s	0	1°	1°
60	Tmp	131	14517	12:53:10.12	12:53:12.41	0	2.3s	+23	5°	1°
61	Tmp	132	16120	12:55:23.96	12:55:21.69	0	2.3s	-23	5°	1°
62	Tmp	137	17616	12:58:02.90	12:58:03.65	0	0.8s	[+8]	2°	1°

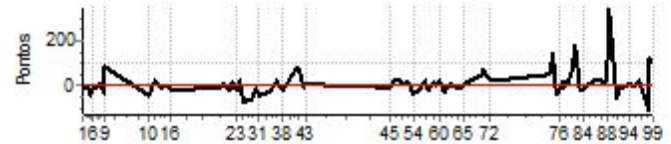
PC	Tp	Trc	DistPC	Ideal	Passagem	Pen	Erro	Pontos	NoPC	AtePC
63	Tmp	142	18970	13:00:45.17	13:00:44.82	0	0.4s	-4	1°	1°
64	Tmp	146	20136	13:03:19.24	13:03:17.82	0	1.4s	-14	5°	1°
65	Tmp	147	20656	13:04:25.19	13:04:26.32	0	1.1s	+11	4°	1°
70	Tmp	159	856	13:13:04.06	13:13:09.10	0	5.0s	+50	5°	1°
71	Tmp	161	1001	13:13:21.94	13:13:29.26	0	7.3s	[+73]	5°	1°
72	Tmp	169	3058	13:17:22.16	13:17:24.97	0	2.8s	+28	7°	2°

Etapa B	Num 35	Pen 0	PCZ 1	Total PP 400	PG 15
----------------	---------------	--------------	--------------	---------------------	--------------

PC	Tp	Trc	DistPC	Ideal	Passagem	Pen	Erro	Pontos	NoPC	AtePC
73	Tmp	177	1667	13:44:29.33	13:44:34.46	0	5.1s	+51	8°	6°
74	Tmp	179	2492	13:46:06.05	13:46:20.60	0	14.6s	+146	11°	9°
75	Tmp	181	3528	13:48:01.00	13:47:58.03	0	3.0s	-30	8°	7°
76	Tmp	183	4054	13:49:01.89	13:49:00.08	0	1.8s	-18	5°	7°
77	Tmp	187	4597	13:50:31.93	13:50:33.38	0	1.5s	+15	7°	7°
78	Tmp	188	4870	13:51:01.88	13:51:01.71	0	0.2s	-2	1°	7°
79	Tmp	189	5009	13:51:15.07	13:51:16.80	0	1.7s	+17	7°	7°
80	Tmp	193	6290	13:53:35.50	13:53:37.84	0	2.3s	+23	4°	6°
81	Tmp	196	7010	13:55:03.64	13:55:10.87	0	7.2s	+72	10°	7°
82	Tmp	198	7742	13:56:22.32	13:56:40.27	0	18.0s	+180	16°	7°
83	Tmp	203	9329	13:59:10.99	13:59:09.50	0	1.5s	-15	2°	7°
84	Tmp	206	9888	14:00:12.93	14:00:11.90	0	1.0s	[-10]	5°	7°
85	Tmp	214	11818	14:04:08.42	14:04:10.21	0	1.8s	+18	9°	7°
86	Tmp	216	13589	14:07:24.42	14:07:27.77	0	3.4s	+34	9°	7°
87	Tmp	221	15094	14:10:31.58	14:10:33.34	0	1.8s	+18	7°	7°
88	Tmp	225	15732	14:11:40.79	14:11:45.83	0	5.0s	+50	1°	7°
90	Tmp	230	16045	14:12:31.16	14:13:06.45	0	35.3s	[+353]	10°	5°
91	Tmp	233	17683	14:15:38.27	14:15:32.88	0	5.4s	-54	7°	4°
92	Tmp	235	18264	14:16:48.72	14:16:45.33	0	3.4s	-34	9°	4°
93	Tmp	235	18716	14:17:39.57	14:17:38.18	0	1.4s	-14	3°	4°
94	Tmp	240	20436	14:21:46.18	14:21:47.07	0	0.9s	+9	7°	4°
95	Tmp	242	21647	14:24:12.67	14:24:12.70	0	0.0s	0	1°	3°
96	Tmp	244	22886	14:26:26.46	14:26:29.14	0	2.7s	+27	5°	3°
97	Tmp	249	25065	14:30:51.26	14:30:40.88	0	10.4s	-104	6°	2°
98	Tmp	250	25179	14:31:09.71	14:31:22.13	0	12.4s	+124	5°	2°
99	Tmp	253	25981	14:33:09.26	14:33:20.29	0	11.0s	+110	7°	2°

Etapa C	Num 35	Pen 0	PCZ 1	Total PP 1165	PG 15
----------------	---------------	--------------	--------------	----------------------	--------------

n° 1	A PP 719	3°	B PP 400	2°	C PP 1165	2°	Tot PP 2284	Col. 2°
-------------	-----------------	-----------	-----------------	-----------	------------------	-----------	--------------------	----------------



Performance Individual

PC	Tp	Trc	DistPC	Ideal	Passagem	Pen	Erro	Pontos	NoPC	AtePC
N	u	36	36 / Kilder Costa / Rafael Campos de Souza							
			Cat / NL / Largada		Ligth / 2 / 09:31:00					
			Jimny							
PC	Tp	Trc	DistPC	Ideal	Passagem	Pen	Erro	Pontos	NoPC	AtePC
1	Tmp	5	1117	10:07:48.59	10:07:51.73	0	3.1s	[+31]	7°	7°
2	Tmp	8	1473	10:08:35.01	10:08:34.17	0	0.8s	-8	5°	5°
3	Tmp	12	1769	10:09:08.31	10:09:07.41	0	0.9s	-9	3°	3°
4	Tmp	14	2219	10:09:55.94	10:09:55.19	0	0.8s	-8	6°	3°
5	Tmp	16	2674	10:10:57.98	10:10:56.94	0	1.0s	[-10]	4°	3°
6	Tmp	17	3343	10:12:04.44	10:12:03.18	0	1.3s	-13	3°	3°
7	Tmp	20	4595	10:15:01.15	10:15:03.54	0	2.4s	+24	3°	3°
8	Tmp	23	5323	10:17:10.09	10:17:08.76	0	1.3s	-13	2°	2°
9	Tmp	24	5384	10:17:21.34	10:17:23.42	0	2.1s	+21	1°	3°
10	Tmp	26	486	10:38:29.47	10:38:26.59	0	2.9s	-29	9°	3°
11	Tmp	26	1037	10:39:33.46	10:39:33.71	0	0.3s	+3	4°	3°
12	Tmp	27	2092	10:41:24.40	10:41:26.61	0	2.2s	+22	3°	3°
13	Tmp	31	2736	10:42:49.42	10:42:51.92	0	2.5s	+25	6°	3°
14	Tmp	32	3386	10:44:06.20	10:44:07.45	0	1.3s	+13	7°	3°
15	Tmp	37	4608	10:46:52.36	10:46:53.65	0	1.3s	+13	5°	3°
16	Tmp	39	5354	10:48:45.45	10:48:44.34	0	1.1s	-11	5°	2°
17	Tmp	42	417	11:10:20.98	11:10:21.08	0	0.1s	+1	2°	2°
18	Tmp	43	941	11:11:46.72	11:11:49.10	0	2.4s	+24	7°	3°
19	Tmp	45	1729	11:13:20.50	11:13:22.23	0	1.7s	+17	5°	3°
20	Tmp	50	3167	11:16:32.42	11:16:31.39	0	1.0s	[-10]	3°	2°
21	Tmp	51	3454	11:17:12.32	11:17:12.23	0	0.1s	-1	1°	2°
22	Tmp	52	3576	11:17:30.23	11:17:29.85	0	0.4s	-4	1°	2°
23	Tmp	54	4440	11:19:09.50	11:19:10.25	0	0.8s	+8	4°	2°
27	Tmp	58	180	11:21:06.98	11:21:08.23	0	1.3s	+13	3°	2°
28	Tmp	59	840	11:22:15.56	11:22:17.91	0	2.4s	+24	4°	1°
29	Tmp	64	2722	11:26:07.44	11:26:07.48	0	0.0s	0	1°	1°
30	Tmp	66	280	11:28:35.57	11:28:34.70	0	0.9s	-9	4°	1°
31	Tmp	70	1240	11:30:10.02	11:30:07.55	0	2.5s	-25	6°	1°
32	Tmp	72	2080	11:31:55.39	11:31:55.82	0	0.4s	+4	5°	1°
33	Tmp	75	2910	11:34:52.66	11:34:53.30	0	0.6s	+6	3°	1°
34	Tmp	75	3363	11:35:45.27	11:35:47.37	0	2.1s	+21	6°	1°
35	Tmp	79	4626	11:38:01.72	11:38:04.80	0	3.1s	[+31]	6°	2°
36	Tmp	81	5021	11:38:53.57	11:38:53.94	0	0.4s	+4	3°	1°
37	Tmp	83	5285	11:39:41.81	11:39:41.67	0	0.1s	-1	2°	1°
38	Tmp	85	5886	11:40:55.59	11:40:56.65	0	1.1s	+11	2°	1°
39	Tmp	92	6994	11:46:18.03	11:46:18.35	0	0.3s	+3	2°	1°
40	Tmp	94	7397	11:47:07.12	11:47:08.74	0	1.6s	+16	3°	1°
41	Tmp	98	8237	11:48:53.24	11:48:53.02	0	0.2s	-2	1°	1°
42	Tmp	102	8883	11:50:26.90	11:50:29.07	0	2.2s	+22	5°	1°
43	Tmp	102	9424	11:51:29.73	11:51:31.59	0	1.9s	+19	6°	1°

Etapa A	Num 36	Pen 0	PCZ 1	Total PP 447	PG 17
----------------	---------------	--------------	--------------	---------------------	--------------

PC	Tp	Trc	DistPC	Ideal	Passagem	Pen	Erro	Pontos	NoPC	AtePC
44	Tmp	106	2870	12:29:22.38	12:29:22.69	0	0.3s	+3	2°	2°
45	Tmp	108	3907	12:31:09.91	12:31:10.67	0	0.8s	+8	7°	3°
46	Tmp	109	4630	12:32:22.69	12:32:22.72	0	0.0s	0	1°	1°
47	Tmp	110	5311	12:33:39.31	12:33:39.88	0	0.6s	+6	2°	1°
48	Tmp	112	6518	12:35:49.18	12:35:50.80	0	1.6s	+16	6°	1°
49	Tmp	113	6909	12:36:33.58	12:36:36.15	0	2.6s	+26	8°	1°
50	Tmp	115	7702	12:38:06.83	12:38:08.51	0	1.7s	+17	6°	1°
51	Tmp	115	8376	12:39:22.66	12:39:23.09	0	0.4s	+4	1°	1°
52	Tmp	117	9079	12:40:51.61	12:40:52.21	0	0.6s	+6	6°	1°
53	Tmp	119	9502	12:41:46.61	12:41:42.30	0	4.3s	-43	7°	1°
54	Tmp	119	9910	12:42:35.57	12:42:32.85	0	2.7s	-27	3°	1°
55	Tmp	120	10582	12:44:23.63	12:44:25.50	0	1.9s	+19	3°	1°
56	Tmp	121	11580	12:47:17.08	12:47:23.36	0	6.3s	[+63]	9°	1°
57	Tmp	125	12308	12:49:12.88	12:49:14.45	0	1.6s	+16	4°	1°
58	Tmp	126	12967	12:51:13.45	12:51:11.36	0	2.1s	-21	5°	1°
59	Tmp	128	13810	12:52:56.11	12:52:52.66	0	3.5s	-35	7°	2°
60	Tmp	131	14517	12:54:10.12	12:54:12.38	0	2.3s	+23	4°	2°
61	Tmp	132	16120	12:56:23.96	12:56:24.36	0	0.4s	+4	2°	2°
62	Tmp	137	17616	12:59:02.90	12:59:03.83	0	0.9s	+9	3°	2°

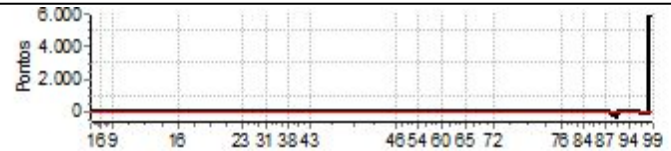
PC	Tp	Trc	DistPC	Ideal	Passagem	Pen	Erro	Pontos	NoPC	AtePC
63	Tmp	142	18970	13:01:45.17	13:01:44.17	0	1.0s	[-10]	2°	2°
64	Tmp	146	20136	13:04:19.24	13:04:19.57	0	0.3s	+3	2°	2°
65	Tmp	147	20656	13:05:25.19	13:05:25.75	0	0.6s	+6	3°	2°
70	Tmp	159	856	13:14:04.06	13:14:08.59	0	4.5s	+45	3°	2°
71	Tmp	161	1001	13:14:21.94	13:14:26.68	0	4.7s	+47	3°	2°
72	Tmp	169	3058	13:18:22.16	13:18:23.65	0	1.5s	+15	5°	1°

Etapa B	Num 36	Pen 0	PCZ 1	Total PP 399	PG 17
----------------	---------------	--------------	--------------	---------------------	--------------

PC	Tp	Trc	DistPC	Ideal	Passagem	Pen	Erro	Pontos	NoPC	AtePC
73	Tmp	177	1667	13:45:29.33	13:45:32.81	0	3.5s	+35	6°	4°
74	Tmp	179	2492	13:47:06.05	13:47:06.60	0	0.6s	+6	1°	2°
75	Tmp	181	3528	13:49:01.00	13:49:00.95	0	0.1s	-1	3°	1°
76	Tmp	183	4054	13:50:01.89	13:50:04.74	0	2.9s	+29	7°	4°
77	Tmp	187	4597	13:51:31.93	13:51:36.62	0	4.7s	+47	9°	6°
78	Tmp	188	4870	13:52:01.88	13:52:04.31	0	2.4s	+24	7°	6°
79	Tmp	189	5009	13:52:15.07	13:52:17.61	0	2.5s	+25	9°	6°
80	Tmp	193	6290	13:54:35.50	13:54:47.10	0	11.6s	[+116]	12°	7°
81	Tmp	196	7010	13:56:03.64	13:56:09.02	0	5.4s	+54	7°	6°
82	Tmp	198	7742	13:57:22.32	13:57:24.40	0	2.1s	+21	5°	5°
83	Tmp	203	9329	14:00:10.99	14:00:15.53	0	4.5s	+45	6°	4°
84	Tmp	206	9888	14:01:12.93	14:01:12.88	0	0.1s	-1	1°	4°
85	Tmp	214	11818	14:05:08.42	14:05:03.52	0	4.9s	-49	13°	4°
86	Tmp	216	13589	14:08:24.42	14:08:27.75	0	3.3s	+33	8°	5°
87	Tmp	221	15094	14:11:31.58	14:11:32.79	0	1.2s	+12	3°	5°
88	Tmp	225	15732	14:12:40.79	14:12:48.60	0	7.8s	+78	6°	5°
90	Tmp	230	16045	14:13:31.16	14:13:17.91	0	13.3s	-133	6°	4°
91	Tmp	233	17683	14:16:38.27	14:16:06.63	0	31.6s	-316	15°	7°
92	Tmp	235	18264	14:17:48.72	14:17:48.01	0	0.7s	-7	2°	6°
93	Tmp	235	18716	14:18:39.57	14:18:41.24	0	1.7s	+17	5°	6°
94	Tmp	240	20436	14:22:46.18	14:22:56.06	0	9.9s	+99	14°	8°
95	Tmp	242	21647	14:25:12.67	14:25:13.43	0	0.8s	[+8]	7°	7°
96	Tmp	244	22886	14:27:26.46	14:27:24.80	0	1.7s	-17	3°	7°
97	Tmp	249	25065	14:31:51.26	14:31:39.00	0	12.3s	-123	7°	3°
98	Tmp	250	25179	14:32:09.71	14:46:27.77	0	14m18s	+6000	17°	14°
99	Tmp	253	25981	14:34:09.26	14:47:49.21	0	13m40s	+6000	17°	15°

Etapa C	Num 36	Pen 0	PCZ 0	Total PP 13172	PG 2
----------------	---------------	--------------	--------------	-----------------------	-------------

n° 2	A PP 447	1°	B PP 399	1°	C PP 13172	15°	Tot PP 14018	Col. 9°
-------------	-----------------	-----------	-----------------	-----------	-------------------	------------	---------------------	----------------



Performance Individual

PC	Tp	Trc	DistPC	Ideal	Passagem	Pen	Erro	Pontos	NoPC	AtePC
N	u	37	37 / Marcelo M. Madeira / Arthur Diniz							
			Cat / NL / Largada Ligth / 3 / 09:32:00							
m	1°									
PC	Tp	Trc	DistPC	Ideal	Passagem	Pen	Erro	Pontos	NoPC	AtePC
1	Tmp	5	1117	10:08:48.59	10:08:48.71	0	0.1s	+1	1°	1°
2	Tmp	8	1473	10:09:35.01	10:09:35.83	0	0.8s	+8	4°	3°
3	Tmp	12	1769	10:10:08.31	10:10:08.53	0	0.2s	+2	1°	2°
4	Tmp	14	2219	10:10:55.94	10:10:55.18	0	0.8s	-8	5°	2°
5	Tmp	16	2674	10:11:57.98	10:11:57.53	0	0.5s	-5	2°	1°
6	Tmp	17	3343	10:13:04.44	10:13:02.85	0	1.6s	-16	4°	2°
7	Tmp	20	4595	10:16:01.15	10:16:04.74	0	3.6s	[+36]	8°	1°
8	Tmp	23	5323	10:18:10.09	10:17:58.13	0	12.0s	-120	8°	4°
9	Tmp	24	5384	10:18:21.34	10:18:13.39	0	8.0s	-80	6°	4°
10	Tmp	26	486	10:39:29.47	10:39:29.52	0	0.1s	+1	1°	4°
11	Tmp	26	1037	10:40:33.46	10:40:32.38	0	1.1s	-11	6°	4°
12	Tmp	27	2092	10:42:24.40	10:42:25.79	0	1.4s	+14	2°	4°
13	Tmp	31	2736	10:43:49.42	10:43:49.86	0	0.4s	+4	2°	4°
14	Tmp	32	3386	10:45:06.20	10:45:05.95	0	0.3s	-3	3°	4°
15	Tmp	37	4608	10:47:52.36	10:47:52.69	0	0.3s	+3	3°	4°
16	Tmp	39	5354	10:49:45.45	10:49:44.25	0	1.2s	-12	6°	4°
17	Tmp	42	417	11:11:20.98	11:11:22.51	0	1.5s	[+15]	10°	4°
18	Tmp	43	941	11:12:46.72	11:12:48.03	0	1.3s	+13	4°	4°
19	Tmp	45	1729	11:14:20.50	11:14:20.81	0	0.3s	+3	2°	4°
20	Tmp	50	3167	11:17:32.42	11:17:31.48	0	0.9s	[-9]	2°	4°
21	Tmp	51	3454	11:18:12.32	11:18:10.47	0	1.9s	-19	4°	3°
22	Tmp	52	3576	11:18:30.23	11:18:29.14	0	1.1s	-11	3°	3°
23	Tmp	54	4440	11:20:09.50	11:20:09.35	0	0.2s	-2	2°	3°
27	Tmp	58	180	11:22:06.98	11:22:07.70	0	0.7s	+7	2°	3°
28	Tmp	59	840	11:23:15.56	11:23:16.09	0	0.5s	+5	2°	3°
29	Tmp	64	2722	11:27:07.44	11:27:06.56	0	0.9s	-9	3°	2°
30	Tmp	66	280	11:29:35.57	11:29:35.45	0	0.1s	-1	1°	2°
31	Tmp	70	1240	11:31:10.02	11:31:10.16	0	0.1s	+1	1°	2°
32	Tmp	72	2080	11:32:55.39	11:32:53.80	0	1.6s	-16	7°	2°
33	Tmp	75	2910	11:35:52.66	11:35:52.52	0	0.1s	-1	2°	2°
34	Tmp	75	3363	11:36:45.27	11:36:44.93	0	0.3s	-3	1°	2°
35	Tmp	79	4626	11:39:01.72	11:39:00.69	0	1.0s	[-10]	1°	1°
36	Tmp	81	5021	11:39:53.57	11:39:50.83	0	2.7s	-27	7°	2°
37	Tmp	83	5285	11:40:41.81	11:40:40.10	0	1.7s	-17	8°	2°
38	Tmp	85	5886	11:41:55.59	11:41:52.80	0	2.8s	-28	10°	2°
39	Tmp	92	6994	11:47:18.03	11:47:15.19	0	2.8s	-28	5°	2°
40	Tmp	94	7397	11:48:07.12	11:48:05.50	0	1.6s	-16	2°	2°
41	Tmp	98	8237	11:49:53.24	11:49:54.78	0	1.5s	+15	6°	2°
42	Tmp	102	8883	11:51:26.90	11:51:26.92	0	0.0s	0	1°	2°
43	Tmp	102	9424	11:52:29.73	11:52:29.37	0	0.4s	-4	4°	2°

Etapa A	Num 37	Pen 0	PCZ 1	Total PP 514	PG 15
----------------	---------------	--------------	--------------	---------------------	--------------

PC	Tp	Trc	DistPC	Ideal	Passagem	Pen	Erro	Pontos	NoPC	AtePC
44	Tmp	106	2870	12:30:22.38	12:30:21.02	0	1.4s	-14	8°	16°
45	Tmp	108	3907	12:32:09.91	12:32:06.72	0	3.2s	-32	11°	12°
46	Tmp	109	4630	12:33:22.69	12:33:19.95	0	2.7s	-27	9°	12°
47	Tmp	110	5311	12:34:39.31	12:34:35.33	0	4.0s	-40	10°	12°
48	Tmp	112	6518	12:36:49.18	12:36:44.28	0	4.9s	-49	10°	11°
49	Tmp	113	6909	12:37:33.58	12:37:33.71	0	0.1s	+1	2°	11°
50	Tmp	115	7702	12:39:06.83	12:39:05.69	0	1.1s	-11	3°	11°
51	Tmp	115	8376	12:40:22.66	12:40:23.67	0	1.0s	[+10]	3°	9°
52	Tmp	117	9079	12:41:51.61	12:41:41.35	0	10.3s	-103	14°	10°
53	Tmp	119	9502	12:42:46.61	12:42:36.30	0	10.3s	-103	11°	10°
54	Tmp	119	9910	12:43:35.57	12:43:30.81	0	4.8s	-48	8°	10°
55	Tmp	120	10582	12:45:23.63	12:45:05.10	0	18.5s	-185	14°	10°
56	Tmp	121	11580	12:48:17.08	12:48:15.30	0	1.8s	-18	4°	10°
57	Tmp	125	12308	12:50:12.88	12:50:05.68	0	7.2s	-72	12°	11°
58	Tmp	126	12967	12:52:13.45	12:52:12.99	0	0.5s	-5	2°	9°
59	Tmp	128	13810	12:53:56.11	12:54:06.88	0	10.8s	[+108]	14°	9°
60	Tmp	131	14517	12:55:10.12	12:55:11.88	0	1.8s	+18	3°	7°
61	Tmp	132	16120	12:57:23.96	12:57:23.62	0	0.3s	-3	1°	7°
62	Tmp	137	17616	13:00:02.90	13:00:04.71	0	1.8s	+18	5°	6°

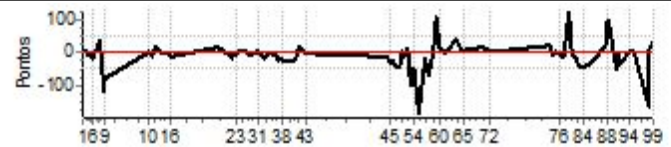
PC	Tp	Trc	DistPC	Ideal	Passagem	Pen	Erro	Pontos	NoPC	AtePC
63	Tmp	142	18970	13:02:45.17	13:02:49.24	0	4.1s	+41	7°	6°
64	Tmp	146	20136	13:05:19.24	13:05:19.68	0	0.4s	+4	3°	6°
65	Tmp	147	20656	13:06:25.19	13:06:25.63	0	0.4s	+4	2°	6°
70	Tmp	159	856	13:15:04.06	13:15:05.64	0	1.6s	+16	1°	5°
71	Tmp	161	1001	13:15:21.94	13:15:23.75	0	1.8s	+18	1°	5°
72	Tmp	169	3058	13:19:22.16	13:19:22.32	0	0.2s	+2	2°	5°

Etapa B	Num 37	Pen 0	PCZ 0	Total PP 832	PG 12
----------------	---------------	--------------	--------------	---------------------	--------------

PC	Tp	Trc	DistPC	Ideal	Passagem	Pen	Erro	Pontos	NoPC	AtePC
73	Tmp	177	1667	13:46:29.33	13:46:31.30	0	2.0s	+20	4°	3°
74	Tmp	179	2492	13:48:06.05	13:48:05.11	0	0.9s	-9	3°	3°
75	Tmp	181	3528	13:50:01.00	13:50:00.93	0	0.1s	-1	2°	2°
76	Tmp	183	4054	13:51:01.89	13:51:01.38	0	0.5s	-5	1°	1°
77	Tmp	187	4597	13:52:31.93	13:52:30.81	0	1.1s	-11	5°	1°
78	Tmp	188	4870	13:53:01.88	13:53:00.71	0	1.2s	-12	2°	1°
79	Tmp	189	5009	13:53:15.07	13:53:13.61	0	1.5s	-15	4°	1°
80	Tmp	193	6290	13:55:35.50	13:55:48.38	0	12.9s	[+129]	13°	1°
81	Tmp	196	7010	13:57:03.64	13:57:02.63	0	1.0s	[-10]	4°	2°
82	Tmp	198	7742	13:58:22.32	13:58:21.10	0	1.2s	-12	3°	2°
83	Tmp	203	9329	14:01:10.99	14:01:06.31	0	4.7s	-47	7°	2°
84	Tmp	206	9888	14:02:12.93	14:02:08.01	0	4.9s	-49	13°	3°
85	Tmp	214	11818	14:06:08.42	14:06:04.98	0	3.4s	-34	10°	3°
86	Tmp	216	13589	14:09:24.42	14:09:23.81	0	0.6s	-6	3°	3°
87	Tmp	221	15094	14:12:31.58	14:12:33.72	0	2.1s	+21	9°	3°
88	Tmp	225	15732	14:13:40.79	14:13:50.23	0	9.4s	+94	8°	3°
90	Tmp	230	16045	14:14:31.16	14:14:40.41	0	9.3s	+93	4°	2°
91	Tmp	233	17683	14:17:38.27	14:17:33.05	0	5.2s	-52	6°	2°
92	Tmp	235	18264	14:18:48.72	14:18:47.68	0	1.0s	-10	4°	2°
93	Tmp	235	18716	14:19:39.57	14:19:35.77	0	3.8s	-38	10°	2°
94	Tmp	240	20436	14:23:46.18	14:23:46.18	0	0.0s	0	2°	2°
95	Tmp	242	21647	14:26:12.67	14:26:12.59	0	0.1s	-1	3°	2°
96	Tmp	244	22886	14:28:26.46	14:28:20.72	0	5.7s	-57	12°	2°
97	Tmp	249	25065	14:32:51.26	14:32:34.78	0	16.5s	-165	8°	1°
98	Tmp	250	25179	14:33:09.71	14:33:10.07	0	0.4s	+4	2°	1°
99	Tmp	253	25981	14:35:09.26	14:35:12.80	0	3.5s	+35	2°	1°

Etapa C	Num 37	Pen 0	PCZ 1	Total PP 791	PG 17
----------------	---------------	--------------	--------------	---------------------	--------------

n° 3	A PP 514	2°	B PP 832	5°	C PP 791	1°	Tot PP 2137	Col. 1°
-------------	-----------------	-----------	-----------------	-----------	-----------------	-----------	--------------------	----------------



Performance Individual

PC	Tp	Trc	DistPC	Ideal	Passagem	Pen	Erro	Pontos	NoPC	AtePC
N	u	38	38 / Raphael Zanol / Luiz Henrique							
			Cat / NL / Largada Ligth / 4 / 09:33:00							
m	5°									
PC	Tp	Trc	DistPC	Ideal	Passagem	Pen	Erro	Pontos	NoPC	AtePC
1	Tmp	5	1117	10:09:48.59	10:10:05.44	0	16.9s	+169	17°	15°
2	Tmp	8	1473	10:10:35.01	10:10:48.40	0	13.4s	+134	17°	17°
3	Tmp	12	1769	10:11:08.31	10:11:19.91	0	11.6s	+116	16°	16°
4	Tmp	14	2219	10:11:55.94	10:11:55.97	0	0.0s	0	1°	16°
5	Tmp	16	2674	10:12:57.98	10:13:02.10	0	4.1s	+41	8°	14°
6	Tmp	17	3343	10:14:04.44	10:14:08.08	0	3.6s	+36	9°	14°
7	Tmp	20	4595	10:17:01.15	10:17:00.65	0	0.5s	[-5]	1°	12°
8	Tmp	23	5323	10:19:10.09	10:19:00.62	0	9.5s	-95	6°	9°
9	Tmp	24	5384	10:19:21.34	10:19:15.97	0	5.4s	-54	4°	7°
10	Tmp	26	486	10:40:29.47	10:40:32.06	0	2.6s	+26	8°	7°
11	Tmp	26	1037	10:41:33.46	10:41:31.91	0	1.6s	-16	8°	7°
12	Tmp	27	2092	10:43:24.40	10:43:28.78	0	4.4s	+44	8°	6°
13	Tmp	31	2736	10:44:49.42	10:44:53.25	0	3.8s	+38	10°	6°
14	Tmp	32	3386	10:46:06.20	10:46:04.71	0	1.5s	-15	9°	6°
15	Tmp	37	4608	10:48:52.36	10:48:52.48	0	0.1s	+1	1°	6°
16	Tmp	39	5354	10:50:45.45	10:50:37.61	0	7.8s	-78	13°	6°
17	Tmp	42	417	11:12:20.98	11:12:19.33	0	1.7s	-17	12°	6°
18	Tmp	43	941	11:13:46.72	11:13:49.12	0	2.4s	+24	6°	6°
19	Tmp	45	1729	11:15:20.50	11:15:22.11	0	1.6s	+16	4°	7°
20	Tmp	50	3167	11:18:32.42	11:19:10.35	0	37.9s	[+379]	16°	7°
21	Tmp	51	3454	11:19:12.32	11:19:51.36	0	39.0s	[+390]	16°	10°
22	Tmp	52	3576	11:19:30.23	11:20:06.93	0	36.7s	+367	15°	11°
23	Tmp	54	4440	11:21:09.50	11:21:20.65	0	11.2s	+112	12°	12°
27	Tmp	58	180	11:23:06.98	11:23:15.36	0	8.4s	+84	6°	9°
28	Tmp	59	840	11:24:15.56	11:24:21.26	0	5.7s	+57	6°	9°
29	Tmp	64	2722	11:28:07.44	11:28:03.41	0	4.0s	-40	7°	9°
30	Tmp	66	280	11:30:35.57	11:30:32.68	0	2.9s	-29	9°	9°
31	Tmp	70	1240	11:32:10.02	11:32:06.59	0	3.4s	-34	7°	9°
32	Tmp	72	2080	11:33:55.39	11:33:55.16	0	0.2s	-2	2°	9°
33	Tmp	75	2910	11:36:52.66	11:36:50.31	0	2.4s	-24	7°	9°
34	Tmp	75	3363	11:37:45.27	11:37:44.74	0	0.5s	[-5]	3°	9°
35	Tmp	79	4626	11:40:01.72	11:40:04.06	0	2.3s	+23	4°	9°
36	Tmp	81	5021	11:40:53.57	11:40:50.72	0	2.9s	-29	8°	9°
37	Tmp	83	5285	11:41:41.81	11:41:39.89	0	1.9s	-19	9°	8°
38	Tmp	85	5886	11:42:55.59	11:42:53.67	0	1.9s	-19	7°	8°
39	Tmp	92	6994	11:48:18.03	11:48:18.16	0	0.1s	+1	1°	8°
40	Tmp	94	7397	11:49:07.12	11:49:10.73	0	3.6s	+36	5°	8°
41	Tmp	98	8237	11:50:53.24	11:50:51.86	0	1.4s	-14	5°	8°
42	Tmp	102	8883	11:52:26.90	11:52:23.00	0	3.9s	-39	7°	8°
43	Tmp	102	9424	11:53:29.73	11:53:30.04	0	0.3s	+3	2°	7°

Etapa A	Num 38	Pen 0	PCZ 1	Total PP 1852	PG 10
----------------	---------------	--------------	--------------	----------------------	--------------

44	Tmp	106	2870	12:31:22.38	12:31:23.31	0	0.9s	+9	5°	5°
45	Tmp	108	3907	12:33:09.91	12:33:09.85	0	0.1s	-1	1°	1°
46	Tmp	109	4630	12:34:22.69	12:34:21.19	0	1.5s	-15	6°	7°
47	Tmp	110	5311	12:35:39.31	12:35:42.83	0	3.5s	+35	9°	4°
48	Tmp	112	6518	12:37:49.18	12:37:50.75	0	1.6s	+16	5°	4°
49	Tmp	113	6909	12:38:33.58	12:38:33.47	0	0.1s	-1	1°	3°
50	Tmp	115	7702	12:40:06.83	12:40:11.75	0	4.9s	+49	12°	4°
51	Tmp	115	8376	12:41:22.66	12:41:30.73	0	8.1s	+81	11°	7°
52	Tmp	117	9079	12:42:51.61	12:42:48.76	0	2.9s	-29	8°	6°
53	Tmp	119	9502	12:43:46.61	12:43:54.11	0	7.5s	+75	8°	8°
54	Tmp	119	9910	12:44:35.57	12:44:37.08	0	1.5s	+15	1°	7°
55	Tmp	120	10582	12:46:23.63	12:46:30.03	0	6.4s	+64	4°	6°
56	Tmp	121	11580	12:49:17.08	12:49:28.75	0	11.7s	+117	12°	8°
57	Tmp	125	12308	12:51:12.88	12:51:14.31	0	1.4s	+14	3°	6°
58	Tmp	126	12967	12:53:13.45	12:53:12.30	0	1.2s	-12	3°	4°
59	Tmp	128	13810	12:54:56.11	12:54:54.28	0	1.8s	-18	4°	3°
60	Tmp	131	14517	12:56:10.12	12:56:11.58	0	1.5s	+15	2°	3°
61	Tmp	132	16120	12:58:23.96	12:58:22.27	0	1.7s	-17	4°	3°
62	Tmp	137	17616	13:01:02.90	13:01:07.46	0	4.6s	+46	7°	4°

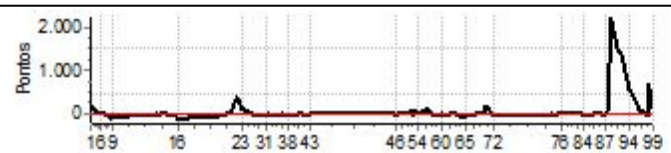
PC	Tp	Trc	DistPC	Ideal	Passagem	Pen	Erro	Pontos	NoPC	AtePC
63	Tmp	142	18970	13:03:45.17	13:03:43.25	0	1.9s	-19	6°	4°
64	Tmp	146	20136	13:06:19.24	13:06:12.59	0	6.7s	-67	8°	4°
65	Tmp	147	20656	13:07:25.19	13:07:22.47	0	2.7s	-27	5°	4°
70	Tmp	159	856	13:16:04.06	13:16:08.77	0	4.7s	+47	4°	4°
71	Tmp	161	1001	13:16:21.94	13:16:42.25	0	20.3s	[+203]	7°	4°
72	Tmp	169	3058	13:20:22.16	13:20:21.17	0	1.0s	[-10]	4°	4°

Etapa B	Num 38	Pen 0	PCZ 0	Total PP 789	PG 13
----------------	---------------	--------------	--------------	---------------------	--------------

73	Tmp	177	1667	13:47:29.33	13:47:29.82	0	0.5s	+5	2°	2°
74	Tmp	179	2492	13:49:06.05	13:49:04.01	0	2.0s	-20	6°	5°
75	Tmp	181	3528	13:51:01.00	13:51:03.04	0	2.0s	+20	6°	5°
76	Tmp	183	4054	13:52:01.89	13:52:03.49	0	1.6s	+16	4°	5°
77	Tmp	187	4597	13:53:31.93	13:53:32.13	0	0.2s	+2	1°	3°
78	Tmp	188	4870	13:54:01.88	13:54:03.36	0	1.5s	+15	4°	4°
79	Tmp	189	5009	13:54:15.07	13:54:15.08	0	0.0s	0	1°	3°
80	Tmp	193	6290	13:56:35.50	13:56:39.51	0	4.0s	+40	6°	4°
81	Tmp	196	7010	13:58:03.64	13:58:04.55	0	0.9s	[+9]	3°	3°
82	Tmp	198	7742	13:59:22.32	13:59:25.92	0	3.6s	+36	7°	3°
83	Tmp	203	9329	14:02:10.99	14:02:12.96	0	2.0s	+20	3°	3°
84	Tmp	206	9888	14:03:12.93	14:03:09.50	0	3.4s	-34	11°	2°
85	Tmp	214	11818	14:07:08.42	14:07:08.56	0	0.1s	+1	2°	2°
86	Tmp	216	13589	14:10:24.42	14:10:28.84	0	4.4s	+44	11°	2°
87	Tmp	221	15094	14:13:31.58	14:13:30.78	0	0.8s	-8	1°	2°
88	Tmp	225	15732	14:14:40.79	14:14:51.85	0	11.1s	+111	9°	2°
90	Tmp	230	16045	14:15:31.16	14:19:16.26	0	3m45s	+2251	17°	15°
91	Tmp	233	17683	14:18:38.27	14:21:18.03	0	2m39s	[+1598]	17°	15°
92	Tmp	235	18264	14:19:48.72	14:22:13.48	0	2m24s	+1448	16°	16°
93	Tmp	235	18716	14:20:39.57	14:22:55.38	0	2m15s	+1358	16°	16°
94	Tmp	240	20436	14:24:46.18	14:25:43.80	0	57.6s	+576	16°	16°
95	Tmp	242	21647	14:27:12.67	14:27:50.55	0	37.9s	+379	16°	16°
96	Tmp	244	22886	14:29:26.46	14:29:37.64	0	11.2s	+112	15°	16°
97	Tmp	249	25065	14:33:51.26	14:33:49.48	0	1.8s	-18	1°	16°
98	Tmp	250	25179	14:34:09.71	14:35:17.91	0	1m08s	+682	10°	15°
99	Tmp	253	25981	14:36:09.26	14:36:19.97	0	10.7s	+107	6°	12°

Etapa C	Num 38	Pen 0	PCZ 1	Total PP 7303	PG 5
----------------	---------------	--------------	--------------	----------------------	-------------

n° 4	A PP 1852	7°	B PP 789	4°	C PP 7303	12°	Tot PP 9944	Col. 5°
-------------	------------------	-----------	-----------------	-----------	------------------	------------	--------------------	----------------



Performance Individual

PC	Tp	Trc	DistPC	Ideal	Passagem	Pen	Erro	Pontos	NoPC	AtePC
N	u	39	39 / Valerio Augusto de Sousa / Dante Eleuterio							
			Cat / NL / Largada / Ligth / 5 / 09:34:00							
m	11°									
PC	Tp	Trc	DistPC	Ideal	Passagem	Pen	Erro	Pontos	NoPC	AtePC
1	Tmp	5	1117	10:10:48.59	10:10:55.33	0	6.7s	+67	12°	10°
2	Tmp	8	1473	10:11:35.01	10:11:42.95	0	7.9s	+79	14°	13°
3	Tmp	12	1769	10:12:08.31	10:12:19.64	0	11.3s	+113	15°	13°
4	Tmp	14	2219	10:12:55.94	10:12:59.55	0	3.6s	+36	11°	12°
5	Tmp	16	2674	10:13:57.98	10:13:54.53	0	3.5s	-35	6°	11°
6	Tmp	17	3343	10:15:04.44	10:15:08.57	0	4.1s	+41	11°	11°
7	Tmp	20	4595	10:18:01.15	10:17:58.59	0	2.6s	-26	5°	10°
8	Tmp	23	5323	10:20:10.09	10:19:45.87	0	24.2s	-242	11°	12°
9	Tmp	24	5384	10:20:21.34	10:20:05.88	0	15.5s	-155	10°	11°
10	Tmp	26	486	10:41:29.47	10:41:39.69	0	10.2s	+102	14°	12°
11	Tmp	26	1037	10:42:33.46	10:42:39.80	0	6.3s	+63	13°	12°
12	Tmp	27	2092	10:44:24.40	10:44:24.52	0	0.1s	[+1]	1°	12°
13	Tmp	31	2736	10:45:49.42	10:45:46.69	0	2.7s	-27	7°	12°
14	Tmp	32	3386	10:47:06.20	10:46:55.56	0	10.6s	-106	13°	12°
15	Tmp	37	4608	10:49:52.36	10:49:58.55	0	6.2s	+62	10°	12°
16	Tmp	39	5354	10:51:45.45	10:51:45.17	0	0.3s	[-3]	3°	11°
17	Tmp	42	417	11:13:20.98	11:13:21.09	0	0.1s	+1	1°	11°
18	Tmp	43	941	11:14:46.72	11:14:35.81	0	10.9s	-109	14°	11°
19	Tmp	45	1729	11:16:20.50	11:16:31.18	0	10.7s	+107	14°	12°
20	Tmp	50	3167	11:19:32.42	11:19:42.59	0	10.2s	+102	12°	12°
21	Tmp	51	3454	11:20:12.32	11:20:33.70	0	21.4s	+214	14°	12°
22	Tmp	52	3576	11:20:30.23	11:20:49.86	0	19.6s	+196	12°	12°
23	Tmp	54	4440	11:22:09.50	11:22:29.06	0	19.6s	+196	14°	13°
27	Tmp	58	180	11:24:06.98	11:24:26.29	0	19.3s	+193	10°	11°
28	Tmp	59	840	11:25:15.56	11:25:31.34	0	15.8s	+158	12°	11°
29	Tmp	64	2722	11:29:07.44	11:29:00.82	0	6.6s	-66	10°	11°
30	Tmp	66	280	11:31:35.57	11:31:41.86	0	6.3s	+63	12°	11°
31	Tmp	70	1240	11:33:10.02	11:33:17.53	0	7.5s	+75	12°	11°
32	Tmp	72	2080	11:34:55.39	11:34:58.70	0	3.3s	+33	11°	11°
33	Tmp	75	2910	11:37:52.66	11:37:49.85	0	2.8s	-28	8°	10°
34	Tmp	75	3363	11:38:45.27	11:38:48.07	0	2.8s	+28	7°	10°
35	Tmp	79	4626	11:41:01.72	11:41:10.46	0	8.7s	+87	9°	10°
36	Tmp	81	5021	11:41:53.57	11:42:04.77	0	11.2s	+112	14°	10°
37	Tmp	83	5285	11:42:41.81	11:42:44.78	0	3.0s	+30	10°	10°
38	Tmp	85	5886	11:43:55.59	11:43:54.31	0	1.3s	-13	4°	10°
39	Tmp	92	6994	11:49:18.03	11:49:47.65	0	29.6s	[+296]	15°	10°
40	Tmp	94	7397	11:50:07.12	11:50:33.65	0	26.5s	[+265]	15°	10°
41	Tmp	98	8237	11:51:53.24	11:52:15.57	0	22.3s	+223	13°	10°
42	Tmp	102	8883	11:53:26.90	11:53:14.07	0	12.8s	-128	11°	10°
43	Tmp	102	9424	11:54:29.73	11:54:06.82	0	22.9s	-229	13°	10°

Etapa A	Num 39	Pen 0	PCZ 0	Total PP 3545	PG 7
----------------	---------------	--------------	--------------	----------------------	-------------

PC	Tp	Trc	DistPC	Ideal	Passagem	Pen	Erro	Pontos	NoPC	AtePC
44	Tmp	106	2870	12:32:22.38	12:32:23.46	0	1.1s	+11	7°	7°
45	Tmp	108	3907	12:34:09.91	12:34:10.14	0	0.2s	+2	2°	2°
46	Tmp	109	4630	12:35:22.69	12:35:23.76	0	1.1s	+11	4°	5°
47	Tmp	110	5311	12:36:39.31	12:36:34.08	0	5.2s	-52	12°	8°
48	Tmp	112	6518	12:38:49.18	12:38:51.62	0	2.4s	+24	8°	9°
49	Tmp	113	6909	12:39:33.58	12:39:35.19	0	1.6s	+16	6°	7°
50	Tmp	115	7702	12:41:06.83	12:41:06.94	0	0.1s	+1	1°	6°
51	Tmp	115	8376	12:42:22.66	12:42:24.16	0	1.5s	+15	6°	6°
52	Tmp	117	9079	12:43:51.61	12:43:51.25	0	0.4s	[-4]	5°	4°
53	Tmp	119	9502	12:44:46.61	12:44:57.86	0	11.3s	+113	12°	3°
54	Tmp	119	9910	12:45:35.57	12:45:39.37	0	3.8s	+38	5°	3°
55	Tmp	120	10582	12:47:23.63	12:47:31.15	0	7.5s	+75	6°	3°
56	Tmp	121	11580	12:50:17.08	12:50:15.69	0	1.4s	-14	2°	3°
57	Tmp	125	12308	12:52:12.88	12:51:57.29	0	15.6s	-156	15°	7°
58	Tmp	126	12967	12:54:13.45	12:53:49.34	0	24.1s	-241	13°	8°
59	Tmp	128	13810	12:55:56.11	12:56:01.22	0	5.1s	+51	8°	8°
60	Tmp	131	14517	12:57:10.12	12:57:23.74	0	13.6s	+136	13°	10°
61	Tmp	132	16120	12:59:23.96	12:59:42.17	0	18.2s	+182	14°	9°
62	Tmp	137	17616	13:02:02.90	13:01:57.32	0	5.6s	-56	8°	9°

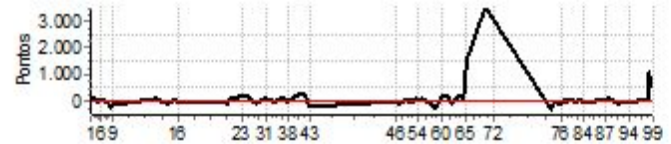
PC	Tp	Trc	DistPC	Ideal	Passagem	Pen	Erro	Pontos	NoPC	AtePC
63	Tmp	142	18970	13:04:45.17	13:05:08.08	0	22.9s	+229	15°	9°
64	Tmp	146	20136	13:07:19.24	13:07:30.57	0	11.3s	+113	9°	9°
65	Tmp	147	20656	13:08:25.19	13:10:58.14	0	2m33s	[+1530]	15°	10°
70	Tmp	159	856	13:17:04.06	13:22:47.01	0	5m43s	+3430	13°	12°
71	Tmp	161	1001	13:17:21.94	13:23:15.27	0	5m53s	+3533	16°	14°
72	Tmp	169	3058	13:21:22.16	13:26:28.78	0	5m06s	+3066	15°	14°

Etapa B	Num 39	Pen 0	PCZ 0	Total PP 11565	PG 3
----------------	---------------	--------------	--------------	-----------------------	-------------

PC	Tp	Trc	DistPC	Ideal	Passagem	Pen	Erro	Pontos	NoPC	AtePC
73	Tmp	177	1667	13:48:29.33	13:47:57.32	0	32.0s	-320	16°	16°
74	Tmp	179	2492	13:50:06.05	13:50:01.22	0	4.8s	-48	8°	15°
75	Tmp	181	3528	13:52:01.00	13:51:53.35	0	7.7s	-77	12°	15°
76	Tmp	183	4054	13:53:01.89	13:52:55.04	0	6.9s	-69	11°	15°
77	Tmp	187	4597	13:54:31.93	13:54:32.34	0	0.4s	+4	2°	13°
78	Tmp	188	4870	13:55:01.88	13:55:03.91	0	2.0s	+20	6°	12°
79	Tmp	189	5009	13:55:15.07	13:55:16.11	0	1.0s	[+10]	3°	10°
80	Tmp	193	6290	13:57:35.50	13:57:42.56	0	7.1s	+71	10°	10°
81	Tmp	196	7010	13:59:03.64	13:59:09.01	0	5.4s	+54	6°	10°
82	Tmp	198	7742	14:00:22.32	14:00:20.59	0	1.7s	-17	4°	10°
83	Tmp	203	9329	14:03:10.99	14:03:16.58	0	5.6s	+56	9°	10°
84	Tmp	206	9888	14:04:12.93	14:04:09.90	0	3.0s	-30	9°	10°
85	Tmp	214	11818	14:08:08.42	14:08:07.03	0	1.4s	-14	6°	10°
86	Tmp	216	13589	14:11:24.42	14:11:28.74	0	4.3s	+43	10°	10°
87	Tmp	221	15094	14:14:31.58	14:14:35.22	0	3.6s	+36	11°	10°
88	Tmp	225	15732	14:15:40.79	14:15:52.21	0	11.4s	+114	10°	10°
90	Tmp	230	16045	14:16:31.16	14:16:38.28	0	7.1s	+71	2°	9°
91	Tmp	233	17683	14:19:38.27	14:19:38.65	0	0.4s	+4	1°	9°
92	Tmp	235	18264	14:20:48.72	14:20:43.26	0	5.5s	-55	12°	8°
93	Tmp	235	18716	14:21:39.57	14:21:38.51	0	1.1s	-11	2°	8°
94	Tmp	240	20436	14:25:46.18	14:25:45.04	0	1.1s	-11	9°	7°
95	Tmp	242	21647	14:28:12.67	14:28:09.42	0	3.3s	-33	9°	8°
96	Tmp	244	22886	14:30:26.46	14:30:31.70	0	5.2s	+52	11°	8°
97	Tmp	249	25065	14:34:51.26	14:34:59.54	0	8.3s	+83	5°	4°
98	Tmp	250	25179	14:35:09.71	14:36:56.85	0	1m47s	[+1071]	11°	3°
99	Tmp	253	25981	14:37:09.26	14:38:04.29	0	55.0s	+550	11°	5°

Etapa C	Num 39	Pen 0	PCZ 0	Total PP 1843	PG 12
----------------	---------------	--------------	--------------	----------------------	--------------

n° 5	A PP 3545	10°	B PP 11565	14°	C PP 1843	5°	Tot PP 16953	Col. 11°
-------------	------------------	------------	-------------------	------------	------------------	-----------	---------------------	-----------------



PC	Tp	Trc	DistPC	Ideal	Passagem	Pen	Erro	Pontos	NoPC	AtePC
N u m	40	40 / Alberto Coimbra Junior / Neiva Maria Coimbra								
		Cat / NL / Largada Ligth / 6 / 09:35:00								

PC	Tp	Trc	DistPC	Ideal	Passagem	Pen	Erro	Pontos	NoPC	AtePC
1	Tmp	5	1117	10:11:48.59	10:11:50.62	0	2.0s	+20	5°	5°
2	Tmp	8	1473	10:12:35.01	10:12:35.05	0	0.0s	0	1°	1°
3	Tmp	12	1769	10:13:08.31	10:13:13.14	0	4.8s	+48	7°	5°
4	Tmp	14	2219	10:13:55.94	10:13:55.99	0	0.1s	+1	3°	4°
5	Tmp	16	2674	10:14:57.98	10:14:57.86	0	0.1s	-1	1°	2°
6	Tmp	17	3343	10:16:04.44	10:16:04.53	0	0.1s	+1	1°	1°
7	Tmp	20	4595	10:19:01.15	10:19:06.17	0	5.0s	+50	9°	4°
8	Tmp	23	5323	10:21:10.09	10:21:10.06	0	0.0s	0	1°	1°
9	Tmp	24	5384	10:21:21.34	10:21:23.84	0	2.5s	+25	2°	2°
10	Tmp	26	486	10:42:29.47	10:42:28.49	0	1.0s	[-10]	2°	1°
11	Tmp	26	1037	10:43:33.46	10:43:33.56	0	0.1s	+1	1°	1°
12	Tmp	27	2092	10:45:24.40	10:45:29.03	0	4.6s	+46	9°	1°
13	Tmp	31	2736	10:46:49.42	10:46:48.84	0	0.6s	-6	3°	1°
14	Tmp	32	3386	10:48:06.20	10:48:07.25	0	1.1s	+11	6°	1°
15	Tmp	37	4608	10:50:52.36	10:50:53.12	0	0.8s	+8	4°	2°
16	Tmp	39	5354	10:52:45.45	10:52:40.35	0	5.1s	-51	10°	3°
17	Tmp	42	417	11:14:20.98	11:14:21.46	0	0.5s	+5	7°	3°
18	Tmp	43	941	11:15:46.72	11:15:46.29	0	0.4s	-4	1°	2°
19	Tmp	45	1729	11:17:20.50	11:17:23.14	0	2.6s	+26	7°	2°
20	Tmp	50	3167	11:20:32.42	11:20:41.78	0	9.4s	+94	10°	3°
21	Tmp	51	3454	11:21:12.32	11:21:17.39	0	5.1s	+51	6°	4°
22	Tmp	52	3576	11:21:30.23	11:21:34.35	0	4.1s	+41	7°	4°
23	Tmp	54	4440	11:23:09.50	11:23:13.08	0	3.6s	+36	8°	4°
27	Tmp	58	180	11:25:06.98	11:25:12.54	0	5.6s	+56	5°	4°
28	Tmp	59	840	11:26:15.56	11:26:16.88	0	1.3s	+13	3°	4°
29	Tmp	64	2722	11:30:07.44	11:30:18.81	0	11.4s	[+114]	11°	4°
30	Tmp	66	280	11:32:35.57	11:32:36.60	0	1.0s	[+10]	6°	4°
31	Tmp	70	1240	11:34:10.02	11:34:12.33	0	2.3s	+23	5°	4°
32	Tmp	72	2080	11:35:55.39	11:35:55.73	0	0.3s	+3	3°	4°
33	Tmp	75	2910	11:38:52.66	11:38:57.25	0	4.6s	+46	10°	4°
34	Tmp	75	3363	11:39:45.27	11:39:49.06	0	3.8s	+38	8°	4°
35	Tmp	79	4626	11:42:01.72	11:42:07.49	0	5.8s	+58	8°	4°
36	Tmp	81	5021	11:42:53.57	11:42:53.46	0	0.1s	-1	2°	4°
37	Tmp	83	5285	11:43:41.81	11:43:40.72	0	1.1s	-11	6°	4°
38	Tmp	85	5886	11:44:55.59	11:44:53.36	0	2.2s	-22	9°	4°
39	Tmp	92	6994	11:50:18.03	11:50:21.19	0	3.2s	+32	6°	4°
40	Tmp	94	7397	11:51:07.12	11:51:11.25	0	4.1s	+41	6°	4°
41	Tmp	98	8237	11:52:53.24	11:53:05.03	0	11.8s	[+118]	10°	4°
42	Tmp	102	8883	11:54:26.90	11:54:29.77	0	2.9s	+29	6°	4°
43	Tmp	102	9424	11:55:29.73	11:55:32.67	0	2.9s	+29	9°	4°

Etapa A	Num	40	Pen	0	PCZ	2	Total PP	928	PG	13
----------------	-----	----	-----	---	-----	---	----------	-----	----	----

44	Tmp	106	2870	12:33:22.38	12:33:26.56	0	4.2s	+42	11°	10°
45	Tmp	108	3907	12:35:09.91	12:35:10.54	0	0.6s	+6	6°	6°
46	Tmp	109	4630	12:36:22.69	12:36:23.94	0	1.3s	+13	5°	6°
47	Tmp	110	5311	12:37:39.31	12:37:39.11	0	0.2s	-2	1°	2°
48	Tmp	112	6518	12:39:49.18	12:39:48.05	0	1.1s	-11	4°	3°
49	Tmp	113	6909	12:40:33.58	12:40:30.68	0	2.9s	-29	9°	4°
50	Tmp	115	7702	12:42:06.83	12:42:08.23	0	1.4s	+14	5°	5°
51	Tmp	115	8376	12:43:22.66	12:43:21.32	0	1.3s	-13	5°	3°
52	Tmp	117	9079	12:44:51.61	12:44:45.26	0	6.4s	-64	10°	7°
53	Tmp	119	9502	12:45:46.61	12:45:45.30	0	1.3s	-13	2°	5°
54	Tmp	119	9910	12:46:35.57	12:46:28.79	0	6.8s	-68	10°	6°
55	Tmp	120	10582	12:48:23.63	12:48:14.78	0	8.9s	-89	8°	7°
56	Tmp	121	11580	12:51:17.08	12:51:23.86	0	6.8s	+68	10°	7°
57	Tmp	125	12308	12:53:12.88	12:53:16.47	0	3.6s	+36	9°	5°
58	Tmp	126	12967	12:55:13.45	12:55:27.27	0	13.8s	+138	8°	5°
59	Tmp	128	13810	12:56:56.11	12:57:02.44	0	6.3s	+63	9°	5°
60	Tmp	131	14517	12:58:10.12	12:58:14.60	0	4.5s	+45	8°	5°
61	Tmp	132	16120	13:00:23.96	13:00:29.00	0	5.0s	+50	8°	5°
62	Tmp	137	17616	13:03:02.90	13:03:02.98	0	0.1s	+1	1°	5°

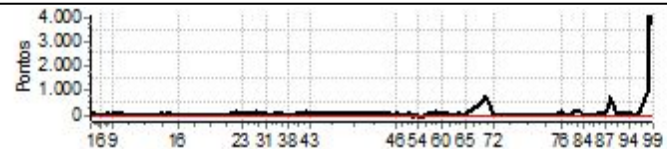
PC	Tp	Trc	DistPC	Ideal	Passagem	Pen	Erro	Pontos	NoPC	AtePC
63	Tmp	142	18970	13:05:45.17	13:05:46.95	0	1.8s	+18	5°	5°
64	Tmp	146	20136	13:08:19.24	13:08:18.51	0	0.7s	[-7]	4°	5°
65	Tmp	147	20656	13:09:25.19	13:09:28.53	0	3.3s	+33	6°	5°
70	Tmp	159	856	13:18:04.06	13:19:00.08	0	56.0s	+560	9°	6°
71	Tmp	161	1001	13:18:21.94	13:19:38.56	0	1m16s	[+766]	12°	6°
72	Tmp	169	3058	13:22:22.16	13:22:22.10	0	0.1s	-1	1°	6°

Etapa B	Num	40	Pen	0	PCZ	0	Total PP	1377	PG	11
----------------	-----	----	-----	---	-----	---	----------	------	----	----

73	Tmp	177	1667	13:49:29.33	13:49:29.58	0	0.3s	+3	1°	1°
74	Tmp	179	2492	13:51:06.05	13:51:05.26	0	0.8s	[-8]	2°	1°
75	Tmp	181	3528	13:53:01.00	13:53:03.39	0	2.4s	+24	7°	3°
76	Tmp	183	4054	13:54:01.89	13:54:10.04	0	8.2s	+82	13°	3°
77	Tmp	187	4597	13:55:31.93	13:55:33.16	0	1.2s	+12	6°	4°
78	Tmp	188	4870	13:56:01.88	13:56:00.60	0	1.3s	-13	3°	3°
79	Tmp	189	5009	13:56:15.07	13:56:15.46	0	0.4s	+4	2°	4°
80	Tmp	193	6290	13:58:35.50	13:58:34.00	0	1.5s	-15	2°	3°
81	Tmp	196	7010	14:00:03.64	14:00:12.96	0	9.3s	+93	12°	4°
82	Tmp	198	7742	14:01:22.32	14:01:30.26	0	7.9s	+79	10°	4°
83	Tmp	203	9329	14:04:10.99	14:04:20.67	0	9.7s	+97	12°	6°
84	Tmp	206	9888	14:05:12.93	14:05:10.53	0	2.4s	-24	7°	6°
85	Tmp	214	11818	14:09:08.42	14:09:07.19	0	1.2s	-12	5°	6°
86	Tmp	216	13589	14:12:24.42	14:12:27.22	0	2.8s	+28	7°	6°
87	Tmp	221	15094	14:15:31.58	14:15:33.09	0	1.5s	+15	5°	6°
88	Tmp	225	15732	14:16:40.79	14:17:14.02	0	33.2s	+332	16°	6°
90	Tmp	230	16045	14:17:31.16	14:18:40.10	0	1m08s	+689	15°	6°
91	Tmp	233	17683	14:20:38.27	14:20:44.40	0	6.1s	+61	10°	6°
92	Tmp	235	18264	14:21:48.72	14:21:48.71	0	0.0s	0	1°	5°
93	Tmp	235	18716	14:22:39.57	14:22:48.96	0	9.4s	+94	13°	7°
94	Tmp	240	20436	14:26:46.18	14:26:47.24	0	1.1s	+11	8°	6°
95	Tmp	242	21647	14:29:12.67	14:29:12.56	0	0.1s	-1	2°	6°
96	Tmp	244	22886	14:31:26.46	14:31:27.85	0	1.4s	+14	2°	5°
97	Tmp	249	25065	14:35:51.26	14:37:35.54	0	1m44s	[+1043]	14°	9°
98	Tmp	250	25179	14:36:09.71	14:43:00.60	0	6m50s	+4109	15°	12°
99	Tmp	253	25981	14:38:09.26	14:44:21.19	0	6m11s	+3719	15°	14°

Etapa C	Num	40	Pen	0	PCZ	1	Total PP	9531	PG	3
----------------	-----	----	-----	---	-----	---	----------	------	----	---

6	A PP	928	4°	B PP	1377	6°	C PP	9531	14°	Tot PP	11836	Col.	8°
----------	------	-----	----	------	------	----	------	------	-----	--------	-------	------	----



Performance Individual

PC	Tp	Trc	DistPC	Ideal	Passagem	Pen	Erro	Pontos	NoPC	AtePC
N	41	41 / Matheus Benatti Ferreira / Gustavo Henrique Andrade								
		Cat / NL / Largada Ligth / 7 / 09:36:00								
		Jimny								
PC	Tp	Trc	DistPC	Ideal	Passagem	Pen	Erro	Pontos	NoPC	AtePC
1	Tmp	5	1117	10:12:48.59	10:12:47.63	0	1.0s	[-10]	3°	3°
2	Tmp	8	1473	10:13:35.01	10:13:31.33	0	3.7s	-37	8°	8°
3	Tmp	12	1769	10:14:08.31	10:14:05.43	0	2.9s	-29	6°	7°
4	Tmp	14	2219	10:14:55.94	10:14:50.99	0	5.0s	-50	14°	9°
5	Tmp	16	2674	10:15:57.98	10:15:52.01	0	6.0s	-60	11°	9°
6	Tmp	17	3343	10:17:04.44	10:17:02.08	0	2.4s	-24	5°	8°
7	Tmp	20	4595	10:20:01.15	10:19:54.51	0	6.6s	-66	11°	9°
8	Tmp	23	5323	10:22:10.09	10:21:42.25	0	27.8s	-278	13°	13°
9	Tmp	24	5384	10:22:21.34	10:22:10.73	0	10.6s	-106	9°	10°
10	Tmp	26	486	10:43:29.47	10:43:31.00	0	1.5s	+15	4°	9°
11	Tmp	26	1037	10:44:33.46	10:44:35.75	0	2.3s	+23	9°	9°
12	Tmp	27	2092	10:46:24.40	10:46:28.73	0	4.3s	+43	7°	9°
13	Tmp	31	2736	10:47:49.42	10:47:51.63	0	2.2s	+22	5°	8°
14	Tmp	32	3386	10:49:06.20	10:49:06.50	0	0.3s	+3	2°	8°
15	Tmp	37	4608	10:51:52.36	10:51:54.28	0	1.9s	+19	6°	7°
16	Tmp	39	5354	10:53:45.45	10:53:45.36	0	0.1s	-1	1°	7°
17	Tmp	42	417	11:15:20.98	11:15:21.26	0	0.3s	+3	3°	7°
18	Tmp	43	941	11:16:46.72	11:16:45.90	0	0.8s	-8	3°	7°
19	Tmp	45	1729	11:18:20.50	11:18:20.54	0	0.0s	0	1°	6°
20	Tmp	50	3167	11:21:32.42	11:21:32.70	0	0.3s	+3	1°	6°
21	Tmp	51	3454	11:22:12.32	11:22:11.16	0	1.2s	-12	3°	6°
22	Tmp	52	3576	11:22:30.23	11:22:29.57	0	0.7s	-7	2°	5°
23	Tmp	54	4440	11:24:09.50	11:24:08.32	0	1.2s	-12	5°	5°
27	Tmp	58	180	11:26:06.98	11:26:06.86	0	0.1s	-1	1°	5°
28	Tmp	59	840	11:27:15.56	11:27:15.99	0	0.4s	+4	1°	5°
29	Tmp	64	2722	11:31:07.44	11:31:08.06	0	0.6s	+6	2°	5°
30	Tmp	66	280	11:33:35.57	11:33:35.41	0	0.2s	-2	2°	5°
31	Tmp	70	1240	11:35:10.02	11:35:09.19	0	0.8s	-8	3°	5°
32	Tmp	72	2080	11:36:55.39	11:36:54.74	0	0.7s	-7	6°	5°
33	Tmp	75	2910	11:39:52.66	11:39:52.56	0	0.1s	-1	1°	5°
34	Tmp	75	3363	11:40:45.27	11:40:46.32	0	1.1s	+11	4°	5°
35	Tmp	79	4626	11:43:01.72	11:43:03.61	0	1.9s	+19	2°	5°
36	Tmp	81	5021	11:43:53.57	11:43:54.49	0	0.9s	[+9]	5°	5°
37	Tmp	83	5285	11:44:41.81	11:44:42.20	0	0.4s	+4	4°	5°
38	Tmp	85	5886	11:45:55.59	11:45:56.86	0	1.3s	+13	3°	5°
39	Tmp	92	6994	11:51:18.03	11:51:27.97	0	9.9s	[+99]	10°	5°
40	Tmp	94	7397	11:52:07.12	11:52:14.52	0	7.4s	+74	8°	5°
41	Tmp	98	8237	11:53:53.24	11:54:07.72	0	14.5s	[+145]	12°	5°
42	Tmp	102	8883	11:55:26.90	11:55:27.70	0	0.8s	+8	3°	5°
43	Tmp	102	9424	11:56:29.73	11:56:29.96	0	0.2s	+2	1°	5°

Etapa A	Num 41	Pen 0	PCZ 1	Total PP 981	PG 12
----------------	---------------	--------------	--------------	---------------------	--------------

PC	Tp	Trc	DistPC	Ideal	Passagem	Pen	Erro	Pontos	NoPC	AtePC
44	Tmp	106	2870	12:34:22.38	12:34:24.31	0	1.9s	+19	9°	8°
45	Tmp	108	3907	12:36:09.91	12:36:12.84	0	2.9s	+29	10°	10°
46	Tmp	109	4630	12:37:22.69	12:37:25.22	0	2.5s	+25	8°	10°
47	Tmp	110	5311	12:38:39.31	12:38:44.01	0	4.7s	+47	11°	10°
48	Tmp	112	6518	12:40:49.18	12:40:55.16	0	6.0s	+60	12°	10°
49	Tmp	113	6909	12:41:33.58	12:41:33.29	0	0.3s	-3	3°	10°
50	Tmp	115	7702	12:43:06.83	12:43:10.43	0	3.6s	+36	9°	10°
51	Tmp	115	8376	12:44:22.66	12:44:28.62	0	6.0s	+60	9°	11°
52	Tmp	117	9079	12:45:51.61	12:45:51.51	0	0.1s	-1	1°	9°
53	Tmp	119	9502	12:46:46.61	12:46:44.31	0	2.3s	-23	4°	9°
54	Tmp	119	9910	12:47:35.57	12:47:31.95	0	3.6s	-36	4°	8°
55	Tmp	120	10582	12:49:23.63	12:49:24.78	0	1.2s	+12	1°	5°
56	Tmp	121	11580	12:52:17.08	12:52:30.18	0	13.1s	[+131]	13°	4°
57	Tmp	125	12308	12:54:12.88	12:54:08.66	0	4.2s	-42	10°	4°
58	Tmp	126	12967	12:56:13.45	12:56:13.36	0	0.1s	-1	1°	3°
59	Tmp	128	13810	12:57:56.11	12:58:04.32	0	8.2s	+82	10°	4°
60	Tmp	131	14517	12:59:10.12	12:59:10.22	0	0.1s	+1	1°	4°
61	Tmp	132	16120	13:01:23.96	13:01:26.53	0	2.6s	+26	6°	4°
62	Tmp	137	17616	13:04:02.90	13:04:03.93	0	1.0s	[+10]	4°	3°

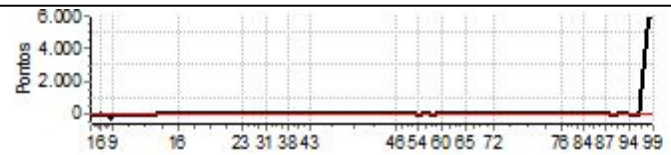
PC	Tp	Trc	DistPC	Ideal	Passagem	Pen	Erro	Pontos	NoPC	AtePC
63	Tmp	142	18970	13:06:45.17	13:06:43.42	0	1.8s	-18	4°	3°
64	Tmp	146	20136	13:09:19.24	13:09:19.58	0	0.3s	+3	1°	3°
65	Tmp	147	20656	13:10:25.19	13:10:25.24	0	0.1s	+1	1°	3°
70	Tmp	159	856	13:19:04.06	13:19:07.36	0	3.3s	+33	2°	3°
71	Tmp	161	1001	13:19:21.94	13:19:28.52	0	6.6s	+66	4°	3°
72	Tmp	169	3058	13:23:22.16	13:23:21.79	0	0.4s	-4	3°	3°

Etapa B	Num 41	Pen 0	PCZ 0	Total PP 628	PG 14
----------------	---------------	--------------	--------------	---------------------	--------------

PC	Tp	Trc	DistPC	Ideal	Passagem	Pen	Erro	Pontos	NoPC	AtePC
73	Tmp	177	1667	13:50:29.33	13:50:27.78	0	1.6s	-16	3°	11°
74	Tmp	179	2492	13:52:06.05	13:52:05.09	0	1.0s	[-10]	4°	4°
75	Tmp	181	3528	13:54:01.00	13:54:00.87	0	0.1s	-1	1°	4°
76	Tmp	183	4054	13:55:01.89	13:55:01.02	0	0.9s	-9	2°	2°
77	Tmp	187	4597	13:56:31.93	13:56:31.31	0	0.6s	-6	4°	2°
78	Tmp	188	4870	13:57:01.88	13:57:03.81	0	1.9s	+19	5°	2°
79	Tmp	189	5009	13:57:15.07	13:57:17.38	0	2.3s	+23	8°	2°
80	Tmp	193	6290	13:59:35.50	13:59:37.30	0	1.8s	+18	3°	2°
81	Tmp	196	7010	14:01:03.64	14:01:03.88	0	0.2s	+2	2°	1°
82	Tmp	198	7742	14:02:22.32	14:02:23.33	0	1.0s	+10	2°	1°
83	Tmp	203	9329	14:05:10.99	14:05:14.83	0	3.8s	+38	5°	1°
84	Tmp	206	9888	14:06:12.93	14:06:13.11	0	0.2s	+2	2°	1°
85	Tmp	214	11818	14:10:08.42	14:10:12.02	0	3.6s	+36	11°	1°
86	Tmp	216	13589	14:13:24.42	14:13:22.83	0	1.6s	-16	6°	1°
87	Tmp	221	15094	14:16:31.58	14:16:33.98	0	2.4s	+24	10°	1°
88	Tmp	225	15732	14:17:40.79	14:17:47.26	0	6.5s	[+65]	4°	1°
90	Tmp	230	16045	14:18:31.16	14:18:23.33	0	7.8s	-78	3°	1°
91	Tmp	233	17683	14:21:38.27	14:21:39.21	0	0.9s	+9	2°	1°
92	Tmp	235	18264	14:22:48.72	14:22:49.99	0	1.3s	+13	5°	1°
93	Tmp	235	18716	14:23:39.57	14:23:42.06	0	2.5s	+25	7°	1°
94	Tmp	240	20436	14:27:46.18	14:27:46.04	0	0.1s	-1	3°	1°
95	Tmp	242	21647	14:30:12.67	14:30:05.17	0	7.5s	-75	14°	1°
96	Tmp	244	22886	14:32:26.46	14:32:26.20	0	0.3s	-3	1°	1°
97	Tmp	249	25065	14:36:51.26	14:47:50.22	0	10m59s	+6000	17°	15°
98	Tmp	250	25179	14:37:09.71	14:48:04.03	0	10m54s	+6000	16°	16°
99	Tmp	253	25981	14:39:09.26	14:48:57.76	0	9m48s	+5885	16°	17°

Etapa C	Num 41	Pen 0	PCZ 0	Total PP 18309	PG 0
----------------	---------------	--------------	--------------	-----------------------	-------------

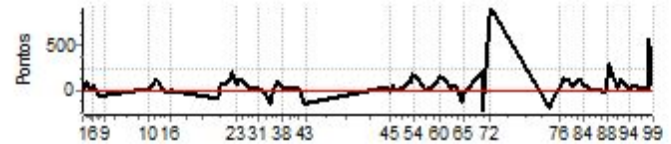
n° 7	A PP 981	5°	B PP 628	3°	C PP 18309	17°	Tot PP 19918	Col. 12°
-------------	-----------------	-----------	-----------------	-----------	-------------------	------------	---------------------	-----------------



Performance Individual

PC	Tp	Trc	DistPC	Ideal	Passagem	Pen	Erro	Pontos	NoPC	AtePC
N u m	42	42 / Erikson Borges / Daniel Ferreira								
		Cat / NL / Largada Ligth / 8 / 09:37:00								
PC	Tp	Trc	DistPC	Ideal	Passagem	Pen	Erro	Pontos	NoPC	AtePC
1	Tmp	5	1117	10:13:48.59	10:13:55.56	0	7.0s	+70	13°	11°
2	Tmp	8	1473	10:14:35.01	10:14:38.89	0	3.9s	+39	9°	10°
3	Tmp	12	1769	10:15:08.31	10:15:17.15	0	8.8s	+88	12°	10°
4	Tmp	14	2219	10:15:55.94	10:16:03.62	0	7.7s	+77	16°	13°
5	Tmp	16	2674	10:16:57.98	10:16:58.72	0	0.7s	+7	3°	10°
6	Tmp	17	3343	10:18:04.44	10:18:09.10	0	4.7s	+47	13°	10°
7	Tmp	20	4595	10:21:01.15	10:20:54.29	0	6.9s	-69	12°	11°
8	Tmp	23	5323	10:23:10.09	10:23:03.79	0	6.3s	-63	5°	7°
9	Tmp	24	5384	10:23:21.34	10:23:15.33	0	6.0s	-60	5°	6°
10	Tmp	26	486	10:44:29.47	10:44:32.06	0	2.6s	+26	7°	6°
11	Tmp	26	1037	10:45:33.46	10:45:38.55	0	5.1s	+51	12°	6°
12	Tmp	27	2092	10:47:24.40	10:47:34.43	0	10.0s	+100	14°	7°
13	Tmp	31	2736	10:48:49.42	10:49:00.77	0	11.4s	+114	12°	7°
14	Tmp	32	3386	10:50:06.20	10:50:08.31	0	2.1s	+21	11°	7°
15	Tmp	37	4608	10:52:52.36	10:52:50.26	0	2.1s	-21	7°	8°
16	Tmp	39	5354	10:54:45.45	10:54:44.93	0	0.5s	-5	4°	8°
17	Tmp	42	417	11:16:20.98	11:16:12.93	0	8.1s	-81	16°	8°
18	Tmp	43	941	11:17:46.72	11:17:53.01	0	6.3s	+63	11°	8°
19	Tmp	45	1729	11:19:20.50	11:19:28.20	0	7.7s	+77	11°	8°
20	Tmp	50	3167	11:22:32.42	11:22:44.05	0	11.6s	+116	14°	8°
21	Tmp	51	3454	11:23:12.32	11:23:28.60	0	16.3s	[+163]	13°	9°
22	Tmp	52	3576	11:23:30.23	11:23:50.19	0	20.0s	[+200]	13°	9°
23	Tmp	54	4440	11:25:09.50	11:25:16.12	0	6.6s	+66	10°	9°
27	Tmp	58	180	11:27:06.98	11:27:19.48	0	12.5s	+125	8°	8°
28	Tmp	59	840	11:28:15.56	11:28:26.53	0	11.0s	+110	9°	8°
29	Tmp	64	2722	11:32:07.44	11:32:08.78	0	1.3s	+13	4°	8°
30	Tmp	66	280	11:34:35.57	11:34:36.48	0	0.9s	[+9]	3°	8°
31	Tmp	70	1240	11:36:10.02	11:36:11.60	0	1.6s	+16	4°	8°
32	Tmp	72	2080	11:37:55.39	11:37:53.44	0	2.0s	-20	9°	8°
33	Tmp	75	2910	11:40:52.66	11:40:39.17	0	13.5s	-135	14°	8°
34	Tmp	75	3363	11:41:45.27	11:41:40.60	0	4.7s	-47	10°	8°
35	Tmp	79	4626	11:44:01.72	11:44:11.19	0	9.5s	+95	12°	8°
36	Tmp	81	5021	11:44:53.57	11:45:01.74	0	8.2s	+82	13°	8°
37	Tmp	83	5285	11:45:41.81	11:45:46.43	0	4.6s	+46	12°	9°
38	Tmp	85	5886	11:46:55.59	11:46:58.73	0	3.1s	+31	11°	9°
39	Tmp	92	6994	11:52:18.03	11:52:19.92	0	1.9s	+19	3°	9°
40	Tmp	94	7397	11:53:07.12	11:53:10.73	0	3.6s	+36	4°	9°
41	Tmp	98	8237	11:54:53.24	11:54:54.27	0	1.0s	[+10]	4°	9°
42	Tmp	102	8883	11:56:26.90	11:56:11.88	0	15.0s	-150	12°	9°
43	Tmp	102	9424	11:57:29.73	11:57:14.69	0	15.0s	-150	12°	9°
Etapa A	Num	42	Pen	0	PCZ	0	Total PP	2336	PG	8
44	Tmp	106	2870	12:35:22.38	12:35:25.47	0	3.1s	+31	10°	9°
45	Tmp	108	3907	12:37:09.91	12:37:08.59	0	1.3s	-13	8°	9°
46	Tmp	109	4630	12:38:22.69	12:38:28.64	0	6.0s	+60	11°	9°
47	Tmp	110	5311	12:39:39.31	12:39:41.76	0	2.5s	+25	6°	9°
48	Tmp	112	6518	12:41:49.18	12:41:49.45	0	0.3s	+3	3°	8°
49	Tmp	113	6909	12:42:33.58	12:42:37.41	0	3.8s	+38	10°	9°
50	Tmp	115	7702	12:44:06.83	12:44:10.49	0	3.7s	+37	10°	9°
51	Tmp	115	8376	12:45:22.66	12:45:31.46	0	8.8s	+88	13°	10°
52	Tmp	117	9079	12:46:51.61	12:47:00.94	0	9.3s	+93	13°	11°
53	Tmp	119	9502	12:47:46.61	12:48:04.57	0	18.0s	+180	14°	11°
54	Tmp	119	9910	12:48:35.57	12:48:51.10	0	15.5s	+155	14°	11°
55	Tmp	120	10582	12:50:23.63	12:50:36.90	0	13.3s	+133	12°	11°
56	Tmp	121	11580	12:53:17.08	12:53:17.86	0	0.8s	[+8]	1°	11°
57	Tmp	125	12308	12:55:12.88	12:55:14.70	0	1.8s	+18	6°	10°
58	Tmp	126	12967	12:57:13.45	12:57:19.41	0	6.0s	+60	6°	11°
59	Tmp	128	13810	12:58:56.11	12:59:04.64	0	8.5s	+85	11°	11°
60	Tmp	131	14517	13:00:10.12	13:00:26.16	0	16.0s	+160	14°	11°
61	Tmp	132	16120	13:02:23.96	13:02:35.62	0	11.7s	+117	12°	11°
62	Tmp	137	17616	13:05:02.90	13:05:06.82	0	3.9s	+39	6°	10°

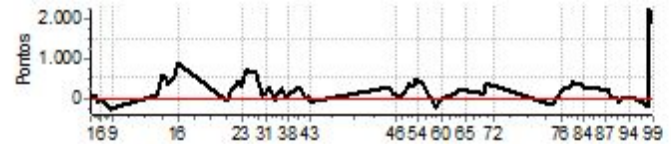
PC	Tp	Trc	DistPC	Ideal	Passagem	Pen	Erro	Pontos	NoPC	AtePC				
63	Tmp	142	18970	13:07:45.17	13:07:49.74	0	4.6s	+46	8°	10°				
64	Tmp	146	20136	13:10:19.24	13:10:06.24	0	13.0s	-130	10°	10°				
65	Tmp	147	20656	13:11:25.19	13:11:20.85	0	4.3s	-43	8°	9°				
70	Tmp	159	856	13:20:04.06	13:20:25.47	0	21.4s	+214	8°	8°				
71	Tmp	161	1001	13:20:21.94	13:20:00.45	0	21.5s	-215	8°	7°				
72	Tmp	169	3058	13:24:22.16	13:25:55.11	0	1m33s	[+930]	13°	8°				
Etapa B	Num	42	Pen	0	PCZ	0	Total PP	1983	PG	9				
73	Tmp	177	1667	13:51:29.33	13:51:09.43	0	19.9s	-199	14°	14°				
74	Tmp	179	2492	13:53:06.05	13:52:57.67	0	8.4s	-84	9°	14°				
75	Tmp	181	3528	13:55:01.00	13:54:59.40	0	1.6s	-16	5°	12°				
76	Tmp	183	4054	13:56:01.89	13:56:03.24	0	1.4s	+14	3°	12°				
77	Tmp	187	4597	13:57:31.93	13:57:40.59	0	8.7s	+87	10°	10°				
78	Tmp	188	4870	13:58:01.88	13:58:15.78	0	13.9s	+139	13°	10°				
79	Tmp	189	5009	13:58:15.07	13:58:27.47	0	12.4s	+124	13°	11°				
80	Tmp	193	6290	14:00:35.50	14:00:45.59	0	10.1s	+101	11°	11°				
81	Tmp	196	7010	14:02:03.64	14:02:09.58	0	5.9s	+59	9°	11°				
82	Tmp	198	7742	14:03:22.32	14:03:30.83	0	8.5s	+85	12°	11°				
83	Tmp	203	9329	14:06:10.99	14:06:23.53	0	12.5s	+125	15°	11°				
84	Tmp	206	9888	14:07:12.93	14:07:19.96	0	7.0s	+70	14°	11°				
85	Tmp	214	11818	14:11:08.42	14:11:08.31	0	0.1s	-1	1°	11°				
86	Tmp	216	13589	14:14:24.42	14:14:25.30	0	0.9s	[+9]	4°	11°				
87	Tmp	221	15094	14:17:31.58	14:17:30.44	0	1.1s	-11	2°	11°				
88	Tmp	225	15732	14:18:40.79	14:18:49.48	0	8.7s	+87	7°	11°				
90	Tmp	230	16045	14:19:31.16	14:19:59.82	0	28.7s	+287	9°	10°				
91	Tmp	233	17683	14:22:38.27	14:22:44.30	0	6.0s	+60	9°	10°				
92	Tmp	235	18264	14:23:48.72	14:23:52.76	0	4.0s	+40	10°	10°				
93	Tmp	235	18716	14:24:39.57	14:24:51.81	0	12.2s	+122	15°	10°				
94	Tmp	240	20436	14:28:46.18	14:28:48.50	0	2.3s	+23	11°	10°				
95	Tmp	242	21647	14:31:12.67	14:31:18.31	0	5.6s	+56	13°	10°				
96	Tmp	244	22886	14:33:26.46	14:33:30.32	0	3.9s	+39	7°	10°				
97	Tmp	249	25065	14:37:51.26	14:37:54.36	0	3.1s	+31	3°	8°				
98	Tmp	250	25179	14:38:09.71	14:39:06.45	0	56.7s	[+567]	9°	6°				
99	Tmp	253	25981	14:40:09.26	14:40:14.98	0	5.7s	+57	3°	6°				
Etapa C	Num	42	Pen	0	PCZ	0	Total PP	1917	PG	11				
n°	8	A PP	2336	9°	B PP	1983	8°	C PP	1917	6°	Tot PP	6236	Col.	4°



Performance Individual

PC	Tp	Trc	DistPC	Ideal	Passagem	Pen	Erro	Pontos	NoPC	AtePC
N u m	43	43 / Wagner Cassiano / Fernanda Rodrigues Silva								
		Cat / NL / Largada Ligth / 9 / 09:38:00								
PC	Tp	Trc	DistPC	Ideal	Passagem	Pen	Erro	Pontos	NoPC	AtePC
1	Tmp	5	1117	10:14:48.59	10:14:55.26	0	6.7s	+67	11°	9°
2	Tmp	8	1473	10:15:35.01	10:15:42.15	0	7.1s	+71	13°	12°
3	Tmp	12	1769	10:16:08.31	10:16:15.55	0	7.2s	+72	10°	12°
4	Tmp	14	2219	10:16:55.94	10:16:58.13	0	2.2s	+22	8°	11°
5	Tmp	16	2674	10:17:57.98	10:17:50.76	0	7.2s	-72	12°	12°
6	Tmp	17	3343	10:19:04.44	10:19:00.55	0	3.9s	-39	10°	12°
7	Tmp	20	4595	10:22:01.15	10:21:40.37	0	20.8s	-208	16°	14°
8	Tmp	23	5323	10:24:10.09	10:23:41.14	0	29.0s	-290	15°	14°
9	Tmp	24	5384	10:24:21.34	10:23:55.49	0	25.9s	-259	14°	15°
10	Tmp	26	486	10:45:29.47	10:45:37.42	0	8.0s	+80	13°	15°
11	Tmp	26	1037	10:46:33.46	10:46:50.55	0	17.1s	+171	16°	14°
12	Tmp	27	2092	10:48:24.40	10:49:18.67	0	54.3s	+543	17°	15°
13	Tmp	31	2736	10:49:49.42	10:50:45.36	0	55.9s	+559	17°	16°
14	Tmp	32	3386	10:51:06.20	10:51:39.06	0	32.9s	+329	17°	16°
15	Tmp	37	4608	10:53:52.36	10:54:49.10	0	56.7s	+567	17°	16°
16	Tmp	39	5354	10:55:45.45	10:57:11.64	0	1m26s	[+862]	17°	17°
17	Tmp	42	417	11:17:20.98	11:17:20.57	0	0.4s	[-4]	6°	17°
18	Tmp	43	941	11:18:46.72	11:18:42.99	0	3.7s	-37	9°	17°
19	Tmp	45	1729	11:20:20.50	11:20:33.42	0	12.9s	+129	16°	17°
20	Tmp	50	3167	11:23:32.42	11:24:07.60	0	35.2s	+352	15°	17°
21	Tmp	51	3454	11:24:12.32	11:24:51.15	0	38.8s	+388	15°	17°
22	Tmp	52	3576	11:24:30.23	11:25:11.71	0	41.5s	+415	16°	17°
23	Tmp	54	4440	11:26:09.50	11:26:42.13	0	32.6s	+326	16°	17°
27	Tmp	58	180	11:28:06.98	11:29:16.52	0	1m09s	[+695]	14°	15°
28	Tmp	59	840	11:29:15.56	11:30:23.68	0	1m08s	+681	14°	14°
29	Tmp	64	2722	11:33:07.44	11:34:10.28	0	1m02s	+628	14°	14°
30	Tmp	66	280	11:35:35.57	11:35:40.53	0	5.0s	+50	11°	14°
31	Tmp	70	1240	11:37:10.02	11:37:19.00	0	9.0s	+90	13°	14°
32	Tmp	72	2080	11:38:55.39	11:39:24.01	0	28.6s	+286	14°	14°
33	Tmp	75	2910	11:41:52.66	11:41:46.16	0	6.5s	-65	11°	14°
34	Tmp	75	3363	11:42:45.27	11:42:51.73	0	6.5s	+65	12°	14°
35	Tmp	79	4626	11:45:01.72	11:45:23.26	0	21.5s	+215	16°	14°
36	Tmp	81	5021	11:45:53.57	11:46:11.48	0	17.9s	+179	16°	14°
37	Tmp	83	5285	11:46:41.81	11:46:49.65	0	7.8s	+78	14°	14°
38	Tmp	85	5886	11:47:55.59	11:48:04.09	0	8.5s	+85	13°	14°
39	Tmp	92	6994	11:53:18.03	11:53:44.19	0	26.2s	+262	14°	14°
40	Tmp	94	7397	11:54:07.12	11:54:28.21	0	21.1s	+211	14°	14°
41	Tmp	98	8237	11:55:53.24	11:55:53.67	0	0.4s	[+4]	2°	13°
42	Tmp	102	8883	11:57:26.90	11:57:31.07	0	4.2s	+42	9°	13°
43	Tmp	102	9424	11:58:29.73	11:58:20.31	0	9.4s	-94	11°	13°
Etapa A	Num	43	Pen	0	PCZ	0	Total PP	8027	PG	4
44	Tmp	106	2870	12:36:22.38	12:36:48.29	0	25.9s	+259	14°	13°
45	Tmp	108	3907	12:38:09.91	12:38:22.42	0	12.5s	+125	13°	13°
46	Tmp	109	4630	12:39:22.69	12:39:31.32	0	8.6s	+86	13°	13°
47	Tmp	110	5311	12:40:39.31	12:40:40.37	0	1.1s	+11	3°	13°
48	Tmp	112	6518	12:42:49.18	12:43:04.91	0	15.7s	+157	15°	13°
49	Tmp	113	6909	12:43:33.58	12:43:52.97	0	19.4s	+194	15°	14°
50	Tmp	115	7702	12:45:06.83	12:45:40.27	0	33.4s	+334	15°	15°
51	Tmp	115	8376	12:46:22.66	12:46:53.44	0	30.8s	+308	15°	15°
52	Tmp	117	9079	12:47:51.61	12:48:21.55	0	29.9s	+299	15°	15°
53	Tmp	119	9502	12:48:46.61	12:49:31.47	0	44.9s	[+449]	15°	15°
54	Tmp	119	9910	12:49:35.57	12:50:20.19	0	44.6s	+446	15°	15°
55	Tmp	120	10582	12:51:23.63	12:52:03.01	0	39.4s	+394	15°	15°
56	Tmp	121	11580	12:54:17.08	12:54:22.91	0	5.8s	+58	7°	15°
57	Tmp	125	12308	12:56:12.88	12:56:09.85	0	3.0s	-30	8°	14°
58	Tmp	126	12967	12:58:13.45	12:57:47.00	0	26.5s	-265	14°	14°
59	Tmp	128	13810	12:59:56.11	12:59:47.30	0	8.8s	-88	12°	14°
60	Tmp	131	14517	13:01:10.12	13:01:07.25	0	2.9s	-29	7°	14°
61	Tmp	132	16120	13:03:23.96	13:03:32.65	0	8.7s	+87	11°	14°
62	Tmp	137	17616	13:06:02.90	13:06:11.24	0	8.3s	+83	10°	14°

PC	Tp	Trc	DistPC	Ideal	Passagem	Pen	Erro	Pontos	NoPC	AtePC				
63	Tmp	142	18970	13:08:45.17	13:09:03.18	0	18.0s	+180	11°	14°				
64	Tmp	146	20136	13:11:19.24	13:11:39.05	0	19.8s	+198	15°	14°				
65	Tmp	147	20656	13:12:25.19	13:12:42.80	0	17.6s	+176	12°	13°				
70	Tmp	159	856	13:21:04.06	13:21:14.63	0	10.6s	+106	7°	10°				
71	Tmp	161	1001	13:21:21.94	13:21:57.53	0	35.6s	+356	9°	10°				
72	Tmp	169	3058	13:25:22.16	13:25:51.27	0	29.1s	+291	10°	10°				
Etapa B	Num	43	Pen	0	PCZ	0	Total PP	4560	PG	7				
73	Tmp	177	1667	13:52:29.33	13:52:13.92	0	15.4s	-154	12°	13°				
74	Tmp	179	2492	13:54:06.05	13:53:56.82	0	9.2s	-92	10°	13°				
75	Tmp	181	3528	13:56:01.00	13:56:04.20	0	3.2s	+32	9°	11°				
76	Tmp	183	4054	13:57:01.89	13:57:14.99	0	13.1s	+131	15°	11°				
77	Tmp	187	4597	13:58:31.93	13:58:54.44	0	22.5s	+225	16°	12°				
78	Tmp	188	4870	13:59:01.88	13:59:30.69	0	28.8s	+288	17°	13°				
79	Tmp	189	5009	13:59:15.07	13:59:43.55	0	28.5s	+285	17°	14°				
80	Tmp	193	6290	14:01:35.50	14:02:03.04	0	27.5s	+275	17°	15°				
81	Tmp	196	7010	14:03:03.64	14:03:46.00	0	42.4s	[+424]	17°	16°				
82	Tmp	198	7742	14:04:22.32	14:04:58.53	0	36.2s	+362	17°	16°				
83	Tmp	203	9329	14:07:10.99	14:07:47.39	0	36.4s	+364	17°	16°				
84	Tmp	206	9888	14:08:12.93	14:08:41.54	0	28.6s	+286	17°	16°				
85	Tmp	214	11818	14:12:08.42	14:12:32.01	0	23.6s	+236	17°	16°				
86	Tmp	216	13589	14:15:24.42	14:15:47.64	0	23.2s	+232	16°	16°				
87	Tmp	221	15094	14:18:31.58	14:18:49.37	0	17.8s	+178	16°	16°				
88	Tmp	225	15732	14:19:40.79	14:19:59.25	0	18.5s	+185	15°	16°				
90	Tmp	230	16045	14:20:31.16	14:20:31.04	0	0.1s	-1	1°	16°				
91	Tmp	233	17683	14:23:38.27	14:23:35.56	0	2.7s	-27	5°	16°				
92	Tmp	235	18264	14:24:48.72	14:24:39.70	0	9.0s	-90	13°	15°				
93	Tmp	235	18716	14:25:39.57	14:25:37.66	0	1.9s	-19	6°	15°				
94	Tmp	240	20436	14:29:46.18	14:29:46.80	0	0.6s	+6	5°	15°				
95	Tmp	242	21647	14:32:12.67	14:32:11.89	0	0.8s	[-8]	6°	15°				
96	Tmp	244	22886	14:34:26.46	14:34:22.06	0	4.4s	-44	9°	15°				
97	Tmp	249	25065	14:38:51.26	14:38:28.37	0	22.9s	-229	9°	14°				
98	Tmp	250	25179	14:39:09.71	14:42:55.99	0	3m46s	+2263	14°	13°				
99	Tmp	253	25981	14:41:09.26	14:44:17.57	0	3m08s	+1883	14°	13°				
Etapa C	Num	43	Pen	0	PCZ	0	Total PP	7887	PG	4				
n°	9	A PP	8027	13°	B PP	4560	10°	C PP	7887	13°	Tot PP	20474	Col.	13°



RALLY MG ETAPA 5



GPS TIMING

Performance Individual

GPS TIMING

PC	Tp	Trc	DistPC	Ideal	Passagem	Pen	Erro	Pontos	NoPC	AtePC
N	44	44 / KleyderVinicio Mendes / Jorge Menezes								
		Cat / NL / Largada Ligth / 10 / 09:39:00								
u										
m	15º									

PC	Tp	Trc	DistPC	Ideal	Passagem	Pen	Erro	Pontos	NoPC	AtePC
63	Tmp	142	18970	13:09:45.17	13:09:22.35	0	22.8s	-228	14º	15º
64	Tmp	146	20136	13:12:19.24	13:12:00.30	0	18.9s	-189	14º	15º
65	Tmp	147	20656	13:13:25.19	13:13:02.08	0	23.1s	-231	14º	15º
70	Tmp	159	856	13:22:04.06	13:23:50.64	0	1m46s	[+1066]	11º	13º
71	Tmp	161	1001	13:22:21.94	13:24:04.19	0	1m42s	+1023	14º	13º
72	Tmp	169	3058	13:26:22.16	13:27:42.45	0	1m20s	+803	12º	13º

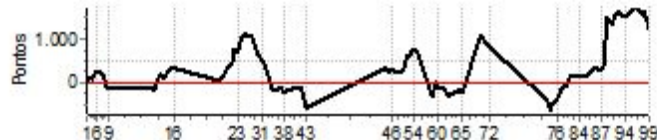
PC	Tp	Trc	DistPC	Ideal	Passagem	Pen	Erro	Pontos	NoPC	AtePC
1	Tmp	5	1117	10:15:48.59	10:15:57.92	0	9.3s	+93	15º	13º
2	Tmp	8	1473	10:16:35.01	10:16:41.83	0	6.8s	+68	12º	14º
3	Tmp	12	1769	10:17:08.31	10:17:18.11	0	9.8s	+98	14º	15º
4	Tmp	14	2219	10:17:55.94	10:18:02.44	0	6.5s	+65	15º	15º
5	Tmp	16	2674	10:18:57.98	10:19:17.89	0	19.9s	+199	17º	16º
6	Tmp	17	3343	10:20:04.44	10:20:29.16	0	24.7s	+247	17º	16º
7	Tmp	20	4595	10:23:01.15	10:23:19.70	0	18.6s	+186	14º	16º
8	Tmp	23	5323	10:25:10.09	10:24:58.28	0	11.8s	-118	7º	16º
9	Tmp	24	5384	10:25:21.34	10:25:11.50	0	9.8s	-98	8º	13º
10	Tmp	26	486	10:46:29.47	10:46:13.54	0	15.9s	-159	17º	14º
11	Tmp	26	1037	10:47:33.46	10:47:15.59	0	17.9s	-179	17º	15º
12	Tmp	27	2092	10:49:24.40	10:49:32.88	0	8.5s	+85	13º	14º
13	Tmp	31	2736	10:50:49.42	10:51:08.21	0	18.8s	+188	15º	14º
14	Tmp	32	3386	10:52:06.20	10:52:17.86	0	11.7s	+117	15º	14º
15	Tmp	37	4608	10:54:52.36	10:55:27.09	0	34.7s	+347	16º	15º
16	Tmp	39	5354	10:56:45.45	10:57:17.76	0	32.3s	+323	16º	15º
17	Tmp	42	417	11:18:20.98	11:18:25.78	0	4.8s	+48	14º	15º
18	Tmp	43	941	11:19:46.72	11:20:02.28	0	15.6s	+156	17º	15º
19	Tmp	45	1729	11:21:20.50	11:21:50.24	0	29.7s	+297	17º	15º
20	Tmp	50	3167	11:24:32.42	11:25:18.99	0	46.6s	+466	17º	15º
21	Tmp	51	3454	11:25:12.32	11:26:21.88	0	1m09s	+696	17º	16º
22	Tmp	52	3576	11:25:30.23	11:26:46.36	0	1m16s	+761	17º	16º
23	Tmp	54	4440	11:27:09.50	11:28:20.68	0	1m11s	+712	17º	16º
27	Tmp	58	180	11:29:06.98	11:30:53.82	0	1m46s	[+1068]	15º	16º
28	Tmp	59	840	11:30:15.56	11:32:06.53	0	1m51s	[+1110]	15º	16º
29	Tmp	64	2722	11:34:07.44	11:35:54.02	0	1m46s	+1066	15º	15º
30	Tmp	66	280	11:36:35.57	11:37:37.98	0	1m02s	+624	15º	15º
31	Tmp	70	1240	11:38:10.02	11:39:02.06	0	52.0s	+520	15º	15º
32	Tmp	72	2080	11:39:55.39	11:40:35.56	0	40.2s	+402	15º	15º
33	Tmp	75	2910	11:42:52.66	11:42:44.34	0	8.3s	-83	12º	15º
34	Tmp	75	3363	11:43:45.27	11:43:28.04	0	17.2s	-172	16º	15º
35	Tmp	79	4626	11:46:01.72	11:45:48.72	0	13.0s	-130	14º	15º
36	Tmp	81	5021	11:46:53.57	11:46:41.25	0	12.3s	-123	15º	15º
37	Tmp	83	5285	11:47:41.81	11:47:29.84	0	12.0s	-120	16º	15º
38	Tmp	85	5886	11:48:55.59	11:48:35.01	0	20.6s	-206	16º	15º
39	Tmp	92	6994	11:54:18.03	11:54:07.77	0	10.3s	-103	11º	15º
40	Tmp	94	7397	11:55:07.12	11:54:55.45	0	11.7s	-117	11º	15º
41	Tmp	98	8237	11:56:53.24	11:56:39.43	0	13.8s	-138	11º	15º
42	Tmp	102	8883	11:58:26.90	11:57:41.70	0	45.2s	-452	14º	14º
43	Tmp	102	9424	11:59:29.73	11:58:30.03	0	59.7s	-597	14º	14º

Etapa B	Num	44	Pen	0	PCZ	1	Total PP	8868	PG	4
---------	-----	----	-----	---	-----	---	----------	------	----	---

PC	Tp	Trc	DistPC	Ideal	Passagem	Pen	Erro	Pontos	NoPC	AtePC
73	Tmp	177	1667	13:53:29.33	13:52:50.31	0	39.0s	-390	17º	17º
74	Tmp	179	2492	13:55:06.05	13:54:04.33	0	1m01s	-617	17º	17º
75	Tmp	181	3528	13:57:01.00	13:56:17.08	0	43.9s	-439	17º	17º
76	Tmp	183	4054	13:58:01.89	13:57:23.51	0	38.4s	-384	17º	17º
77	Tmp	187	4597	13:59:31.93	13:59:09.00	0	22.9s	-229	17º	17º
78	Tmp	188	4870	14:00:01.88	13:59:44.94	0	16.9s	-169	15º	17º
79	Tmp	189	5009	14:00:15.07	13:59:59.24	0	15.8s	-158	15º	17º
80	Tmp	193	6290	14:02:35.50	14:02:29.48	0	6.0s	-60	9º	17º
81	Tmp	196	7010	14:04:03.64	14:04:15.40	0	11.8s	+118	14º	17º
82	Tmp	198	7742	14:05:22.32	14:05:35.62	0	13.3s	+133	15º	17º
83	Tmp	203	9329	14:08:10.99	14:08:27.41	0	16.4s	+164	16º	17º
84	Tmp	206	9888	14:09:12.93	14:09:27.72	0	14.8s	+148	16º	17º
85	Tmp	214	11818	14:13:08.42	14:13:26.32	0	17.9s	+179	16º	17º
86	Tmp	216	13589	14:16:24.42	14:16:59.44	0	35.0s	+350	17º	17º
87	Tmp	221	15094	14:19:31.58	14:20:00.83	0	29.3s	+293	17º	17º
88	Tmp	225	15732	14:20:40.79	14:21:24.75	0	44.0s	+440	17º	17º
90	Tmp	230	16045	14:21:31.16	14:23:56.41	0	2m25s	+1453	16º	17º
91	Tmp	233	17683	14:24:38.27	14:26:54.66	0	2m16s	+1364	16º	17º
92	Tmp	235	18264	14:25:48.72	14:28:24.17	0	2m35s	+1555	17º	17º
93	Tmp	235	18716	14:26:39.57	14:29:22.63	0	2m43s	+1631	17º	17º
94	Tmp	240	20436	14:30:46.18	14:33:17.83	0	2m31s	+1517	17º	17º
95	Tmp	242	21647	14:33:12.67	14:35:55.69	0	2m43s	+1630	17º	17º
96	Tmp	244	22886	14:35:26.46	14:38:18.73	0	2m52s	[+1723]	17º	17º
97	Tmp	249	25065	14:39:51.26	14:42:26.57	0	2m35s	+1553	16º	17º
98	Tmp	250	25179	14:40:09.71	14:42:49.26	0	2m39s	+1596	12º	17º
99	Tmp	253	25981	14:42:09.26	14:44:10.90	0	2m01s	+1216	12º	16º

Etapa C	Num	44	Pen	0	PCZ	0	Total PP	17786	PG	0
---------	-----	----	-----	---	-----	---	----------	-------	----	---

nº	10	A PP	10559	14º	B PP	8868	13º	C PP	17786	16º	Tot PP	37213	Col.	15º
----	----	------	-------	-----	------	------	-----	------	-------	-----	--------	-------	------	-----

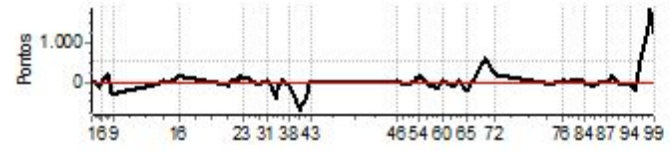


PC	Tp	Trc	DistPC	Ideal	Passagem	Pen	Erro	Pontos	NoPC	AtePC
44	Tmp	106	2870	12:37:22.38	12:37:55.60	0	33.2s	+332	15º	14º
45	Tmp	108	3907	12:39:09.91	12:39:35.05	0	25.1s	+251	16º	16º
46	Tmp	109	4630	12:40:22.69	12:40:50.55	0	27.9s	+279	16º	16º
47	Tmp	110	5311	12:41:39.31	12:42:03.31	0	24.0s	+240	16º	16º
48	Tmp	112	6518	12:43:49.18	12:44:11.69	0	22.5s	+225	16º	16º
49	Tmp	113	6909	12:44:33.58	12:44:56.20	0	22.6s	+226	16º	16º
50	Tmp	115	7702	12:46:06.83	12:46:49.52	0	42.7s	+427	16º	16º
51	Tmp	115	8376	12:47:22.66	12:48:20.89	0	58.2s	+582	16º	16º
52	Tmp	117	9079	12:48:51.61	12:49:51.59	0	1m00s	+600	16º	16º
53	Tmp	119	9502	12:49:46.61	12:50:59.26	0	1m12s	+727	16º	16º
54	Tmp	119	9910	12:50:35.57	12:51:49.01	0	1m13s	+734	16º	16º
55	Tmp	120	10582	12:52:23.63	12:53:30.47	0	1m06s	+668	16º	16º
56	Tmp	121	11580	12:55:17.08	12:55:38.80	0	21.7s	+217	15º	16º
57	Tmp	125	12308	12:57:12.88	12:57:12.92	0	0.0s	0	1º	16º
58	Tmp	126	12967	12:59:13.45	12:58:40.67	0	32.8s	-328	15º	16º
59	Tmp	128	13810	13:00:56.11	13:00:57.56	0	1.5s	+15	3º	16º
60	Tmp	131	14517	13:02:10.12	13:01:57.57	0	12.6s	-126	12º	15º
61	Tmp	132	16120	13:04:23.96	13:04:11.55	0	12.4s	-124	13º	15º
62	Tmp	137	17616	13:07:02.90	13:06:33.57	0	29.3s	-293	14º	15º

Performance Individual

PC	Tp	Trc	DistPC	Ideal	Passagem	Pen	Erro	Pontos	NoPC	AtePC
N	45	45 / Rodrigo Fernandes Moreira / Carlos F. M. Figueiredo								
u	7º	Cat / NL / Largada / Ligth / 11 / 09:40:00								
m		Pajero Tr4								
PC	Tp	Trc	DistPC	Ideal	Passagem	Pen	Erro	Pontos	NoPC	AtePC
1	Tmp	5	1117	10:16:48.59	10:16:50.18	0	1.6s	+16	4º	4º
2	Tmp	8	1473	10:17:35.01	10:17:34.71	0	0.3s	-3	3º	4º
3	Tmp	12	1769	10:18:08.31	10:18:10.15	0	1.8s	+18	5º	4º
4	Tmp	14	2219	10:18:55.94	10:18:54.59	0	1.4s	-14	7º	5º
5	Tmp	16	2674	10:19:57.98	10:19:48.39	0	9.6s	-96	14º	6º
6	Tmp	17	3343	10:21:04.44	10:21:07.28	0	2.8s	+28	6º	5º
7	Tmp	20	4595	10:24:01.15	10:24:20.72	0	19.6s	[+196]	15º	5º
8	Tmp	23	5323	10:26:10.09	10:25:42.19	0	27.9s	-279	14º	11º
9	Tmp	24	5384	10:26:21.34	10:25:54.41	0	26.9s	-269	15º	12º
10	Tmp	26	486	10:47:29.47	10:47:25.56	0	3.9s	-39	12º	11º
11	Tmp	26	1037	10:48:33.46	10:48:34.26	0	0.8s	[+8]	5º	11º
12	Tmp	27	2092	10:50:24.40	10:50:28.15	0	3.8s	+38	6º	11º
13	Tmp	31	2736	10:51:49.42	10:51:49.06	0	0.4s	-4	1º	11º
14	Tmp	32	3386	10:53:06.20	10:53:06.69	0	0.5s	[+5]	5º	10º
15	Tmp	37	4608	10:55:52.36	10:56:00.75	0	8.4s	+84	12º	9º
16	Tmp	39	5354	10:57:45.45	10:58:03.82	0	18.4s	[+184]	15º	12º
17	Tmp	42	417	11:19:20.98	11:19:19.34	0	1.6s	-16	11º	12º
18	Tmp	43	941	11:20:46.72	11:20:39.28	0	7.4s	-74	12º	12º
19	Tmp	45	1729	11:22:20.50	11:22:29.58	0	9.1s	+91	13º	11º
20	Tmp	50	3167	11:25:32.42	11:25:38.53	0	6.1s	+61	8º	11º
21	Tmp	51	3454	11:26:12.32	11:26:25.87	0	13.6s	+136	10º	11º
22	Tmp	52	3576	11:26:30.23	11:26:48.54	0	18.3s	+183	11º	10º
23	Tmp	54	4440	11:28:09.50	11:28:22.82	0	13.3s	+133	13º	11º
27	Tmp	58	180	11:30:06.98	11:30:18.27	0	11.3s	+113	7º	10º
28	Tmp	59	840	11:31:15.56	11:31:25.36	0	9.8s	+98	8º	10º
29	Tmp	64	2722	11:35:07.44	11:35:02.57	0	4.9s	-49	8º	10º
30	Tmp	66	280	11:37:35.57	11:37:37.03	0	1.5s	+15	7º	10º
31	Tmp	70	1240	11:39:10.02	11:39:15.83	0	5.8s	+58	9º	10º
32	Tmp	72	2080	11:40:55.39	11:40:57.09	0	1.7s	+17	8º	10º
33	Tmp	75	2910	11:43:52.66	11:43:15.56	0	37.1s	-371	16º	11º
34	Tmp	75	3363	11:44:45.27	11:44:33.66	0	11.6s	-116	14º	11º
35	Tmp	79	4626	11:47:01.72	11:47:11.03	0	9.3s	+93	10º	11º
36	Tmp	81	5021	11:47:53.57	11:47:58.38	0	4.8s	+48	9º	11º
37	Tmp	83	5285	11:48:41.81	11:48:40.37	0	1.4s	-14	7º	11º
38	Tmp	85	5886	11:49:55.59	11:49:52.08	0	3.5s	-35	12º	11º
39	Tmp	92	6994	11:55:18.03	11:54:11.54	0	1m06s	-665	16º	11º
40	Tmp	94	7397	11:56:07.12	11:55:10.81	0	56.3s	-563	16º	11º
41	Tmp	98	8237	11:57:53.24	11:57:14.38	0	38.9s	-389	15º	11º
42	Tmp	102	8883	11:59:26.90	11:59:28.79	0	1.9s	+19	4º	11º
43	Tmp	102	9424	12:00:29.73	12:00:32.25	0	2.5s	+25	7º	11º
Etapa A	Num 45	Pen 0	PCZ 0	Total PP 4270	PG 6					
44	Tmp	106	2870	12:38:22.38	12:38:23.26	0	0.9s	[+9]	4º	4º
45	Tmp	108	3907	12:40:09.91	12:40:10.45	0	0.5s	+5	5º	5º
46	Tmp	109	4630	12:41:22.69	12:41:28.11	0	5.4s	+54	10º	4º
47	Tmp	110	5311	12:42:39.31	12:42:40.53	0	1.2s	+12	4º	5º
48	Tmp	112	6518	12:44:49.18	12:44:46.99	0	2.2s	-22	7º	5º
49	Tmp	113	6909	12:45:33.58	12:45:31.04	0	2.5s	-25	7º	6º
50	Tmp	115	7702	12:47:06.83	12:47:01.95	0	4.9s	-49	11º	8º
51	Tmp	115	8376	12:48:22.66	12:48:23.97	0	1.3s	+13	4º	8º
52	Tmp	117	9079	12:49:51.61	12:49:51.99	0	0.4s	+4	4º	5º
53	Tmp	119	9502	12:50:46.61	12:51:01.17	0	14.6s	+146	13º	7º
54	Tmp	119	9910	12:51:35.57	12:51:50.38	0	14.8s	+148	13º	9º
55	Tmp	120	10582	12:53:23.63	12:53:33.59	0	10.0s	+100	9º	9º
56	Tmp	121	11580	12:56:17.08	12:56:09.81	0	7.3s	-73	11º	9º
57	Tmp	125	12308	12:58:12.88	12:58:06.32	0	6.6s	-66	11º	9º
58	Tmp	126	12967	13:00:13.45	12:59:59.39	0	14.1s	-141	10º	10º
59	Tmp	128	13810	13:01:56.11	13:01:58.44	0	2.3s	+23	5º	10º
60	Tmp	131	14517	13:03:10.12	13:03:12.94	0	2.8s	+28	6º	8º
61	Tmp	132	16120	13:05:23.96	13:05:22.77	0	1.2s	-12	3º	8º
62	Tmp	137	17616	13:08:02.90	13:07:56.02	0	6.9s	-69	9º	8º

PC	Tp	Trc	DistPC	Ideal	Passagem	Pen	Erro	Pontos	NoPC	AtePC
63	Tmp	142	18970	13:10:45.17	13:10:50.70	0	5.5s	+55	9º	8º
64	Tmp	146	20136	13:13:19.24	13:13:05.04	0	14.2s	-142	11º	8º
65	Tmp	147	20656	13:14:25.19	13:14:07.05	0	18.1s	-181	13º	8º
70	Tmp	159	856	13:23:04.06	13:24:05.21	0	1m01s	[+612]	10º	7º
71	Tmp	161	1001	13:23:21.94	13:24:17.93	0	56.0s	+560	10º	9º
72	Tmp	169	3058	13:27:22.16	13:27:44.24	0	22.1s	+221	8º	9º
Etapa B	Num 45	Pen 0	PCZ 0	Total PP 2149	PG 8					
73	Tmp	177	1667	13:54:29.33	13:54:26.42	0	2.9s	-29	5º	12º
74	Tmp	179	2492	13:56:06.05	13:56:07.44	0	1.4s	+14	5º	6º
75	Tmp	181	3528	13:58:01.00	13:58:01.27	0	0.3s	+3	4º	6º
76	Tmp	183	4054	13:59:01.89	13:59:05.37	0	3.5s	+35	8º	6º
77	Tmp	187	4597	14:00:31.93	14:00:32.47	0	0.5s	+5	3º	5º
78	Tmp	188	4870	14:01:01.88	14:01:04.70	0	2.8s	+28	8º	5º
79	Tmp	189	5009	14:01:15.07	14:01:16.79	0	1.7s	+17	6º	5º
80	Tmp	193	6290	14:03:35.50	14:03:41.18	0	5.7s	+57	8º	5º
81	Tmp	196	7010	14:05:03.64	14:05:11.00	0	7.4s	+74	11º	5º
82	Tmp	198	7742	14:06:22.32	14:06:30.76	0	8.4s	+84	11º	6º
83	Tmp	203	9329	14:09:10.99	14:09:14.42	0	3.4s	+34	4º	5º
84	Tmp	206	9888	14:10:12.93	14:10:13.64	0	0.7s	[+7]	4º	5º
85	Tmp	214	11818	14:14:08.42	14:14:03.19	0	5.2s	-52	14º	5º
86	Tmp	216	13589	14:17:24.42	14:17:24.24	0	0.2s	-2	2º	4º
87	Tmp	221	15094	14:20:31.58	14:20:33.61	0	2.0s	+20	8º	4º
88	Tmp	225	15732	14:21:40.79	14:21:46.60	0	5.8s	+58	2º	4º
90	Tmp	230	16045	14:22:31.16	14:22:49.08	0	17.9s	+179	7º	3º
91	Tmp	233	17683	14:25:38.27	14:25:39.35	0	1.1s	+11	3º	3º
92	Tmp	235	18264	14:26:48.72	14:26:45.44	0	3.3s	-33	8º	3º
93	Tmp	235	18716	14:27:39.57	14:27:36.82	0	2.8s	-28	8º	3º
94	Tmp	240	20436	14:31:46.18	14:31:41.23	0	5.0s	-50	13º	3º
95	Tmp	242	21647	14:34:12.67	14:33:52.91	0	19.8s	-198	15º	4º
96	Tmp	244	22886	14:36:26.46	14:37:18.56	0	52.1s	+521	16º	4º
97	Tmp	249	25065	14:40:51.26	14:43:21.94	0	2m30s	[+1507]	15º	7º
98	Tmp	250	25179	14:41:09.71	14:44:16.56	0	3m06s	+1869	13º	11º
99	Tmp	253	25981	14:43:09.26	14:45:13.45	0	2m04s	+1242	13º	11º
Etapa C	Num 45	Pen 0	PCZ 0	Total PP 4643	PG 6					
nº 11	A PP 4270	11º	B PP 2149	9º	C PP 4643	11º	Tot PP 11062	Col. 7º		



Performance Individual

Table with columns: PC, Tp, Trc, DistPC, Ideal, Passagem, Pen, Erro, Pontos, NoPC, AtePC. Rows include participant info (N 46, Cat / NL / Largada, Ligth / 12 / 09:41:00) and a list of stages from 1 to 43 with timing and score details.

Summary row for Etapa A: Num 46, Pen 0, PCZ 1, Total PP 19815, PG 0

Table with columns: PC, Tp, Trc, DistPC, Ideal, Passagem, Pen, Erro, Pontos, NoPC, AtePC. Rows include stages 44 to 62 with timing and score details.

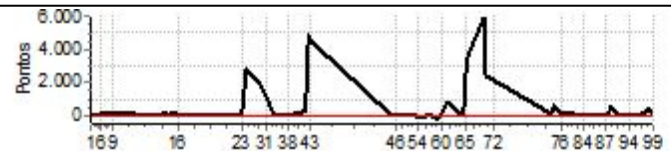
Table with columns: PC, Tp, Trc, DistPC, Ideal, Passagem, Pen, Erro, Pontos, NoPC, AtePC. Rows include stages 63 to 72 with timing and score details.

Summary row for Etapa B: Num 46, Pen 0, PCZ 0, Total PP 15788, PG 2

Table with columns: PC, Tp, Trc, DistPC, Ideal, Passagem, Pen, Erro, Pontos, NoPC, AtePC. Rows include stages 73 to 99 with timing and score details.

Summary row for Etapa C: Num 46, Pen 0, PCZ 1, Total PP 2765, PG 8

Summary row for the entire rally: n° 12, A PP 19815, B PP 15788, C PP 2765, Tot PP 38368, Col. 16°



Performance Individual

PC	Tp	Trc	DistPC	Ideal	Passagem	Pen	Erro	Pontos	NoPC	AtePC
N u m	47	47 / Arthur de Oliveira / Lucas Carvalho								
		Cat / NL / Largada Ligth / 13 / 09:42:00								
PC	Tp	Trc	DistPC	Ideal	Passagem	Pen	Erro	Pontos	NoPC	AtePC
1	Tmp	5	1117	10:18:48.59	10:19:04.28	0	15.7s	+157	16°	14°
2	Tmp	8	1473	10:19:35.01	10:19:47.84	0	12.8s	+128	16°	15°
3	Tmp	12	1769	10:20:08.31	10:20:25.60	0	17.3s	+173	17°	17°
4	Tmp	14	2219	10:20:55.94	10:21:05.16	0	9.2s	+92	17°	17°
5	Tmp	16	2674	10:21:57.98	10:22:08.61	0	10.6s	+106	15°	17°
6	Tmp	17	3343	10:23:04.44	10:23:16.55	0	12.1s	+121	15°	17°
7	Tmp	20	4595	10:26:01.15	10:26:04.01	0	2.9s	+29	6°	15°
8	Tmp	23	5323	10:28:10.09	10:28:30.45	0	20.4s	+204	10°	15°
9	Tmp	24	5384	10:28:21.34	10:28:45.16	0	23.8s	[+238]	13°	14°
10	Tmp	26	486	10:49:29.47	10:49:43.87	0	14.4s	+144	16°	16°
11	Tmp	26	1037	10:50:33.46	10:50:46.61	0	13.2s	+132	14°	16°
12	Tmp	27	2092	10:52:24.40	10:52:40.81	0	16.4s	+164	16°	16°
13	Tmp	31	2736	10:53:49.42	10:54:04.56	0	15.1s	+151	13°	15°
14	Tmp	32	3386	10:55:06.20	10:55:18.43	0	12.2s	+122	16°	15°
15	Tmp	37	4608	10:57:52.36	10:58:04.65	0	12.3s	+123	13°	14°
16	Tmp	39	5354	10:59:45.45	10:59:52.91	0	7.5s	+75	12°	14°
17	Tmp	42	417	11:21:20.98	11:21:35.27	0	14.3s	+143	17°	14°
18	Tmp	43	941	11:22:46.72	11:23:01.15	0	14.4s	+144	16°	14°
19	Tmp	45	1729	11:24:20.50	11:24:32.17	0	11.7s	+117	15°	14°
20	Tmp	50	3167	11:27:32.42	11:27:40.60	0	8.2s	+82	9°	14°
21	Tmp	51	3454	11:28:12.32	11:28:26.89	0	14.6s	+146	11°	14°
22	Tmp	52	3576	11:28:30.23	11:28:35.27	0	5.0s	+50	8°	14°
23	Tmp	54	4440	11:30:09.50	11:30:31.36	0	21.9s	+219	15°	14°
27	Tmp	58	180	11:32:06.98	11:32:30.00	0	23.0s	[+230]	12°	12°
28	Tmp	59	840	11:33:15.56	11:33:31.36	0	15.8s	+158	11°	12°
29	Tmp	64	2722	11:37:07.44	11:37:19.46	0	12.0s	+120	12°	12°
30	Tmp	66	280	11:39:35.57	11:39:29.04	0	6.5s	-65	13°	12°
31	Tmp	70	1240	11:41:10.02	11:41:21.22	0	11.2s	+112	14°	12°
32	Tmp	72	2080	11:42:55.39	11:43:07.21	0	11.8s	+118	13°	12°
33	Tmp	75	2910	11:45:52.66	11:46:06.09	0	13.4s	+134	13°	12°
34	Tmp	75	3363	11:46:45.27	11:46:58.49	0	13.2s	+132	15°	12°
35	Tmp	79	4626	11:49:01.72	11:49:17.32	0	15.6s	+156	15°	12°
36	Tmp	81	5021	11:49:53.57	11:50:00.46	0	6.9s	+69	12°	12°
37	Tmp	83	5285	11:50:41.81	11:50:50.96	0	9.2s	+92	15°	12°
38	Tmp	85	5886	11:51:55.59	11:52:04.87	0	9.3s	+93	14°	12°
39	Tmp	92	6994	11:57:18.03	11:57:24.72	0	6.7s	+67	8°	12°
40	Tmp	94	7397	11:58:07.12	11:58:23.58	0	16.5s	+165	12°	12°
41	Tmp	98	8237	11:59:53.24	12:07:40.40	0	7m47s	+4672	16°	14°
42	Tmp	102	8883	12:01:26.90	12:08:30.25	0	7m03s	+4234	15°	15°
43	Tmp	102	9424	12:02:29.73	12:09:02.62	0	6m32s	+3929	15°	15°

Etapa A	Num	47	Pen	0	PCZ	0	Total PP	17138	PG	2
---------	-----	----	-----	---	-----	---	----------	-------	----	---

44	Tmp	106	2870	12:40:22.38	12:41:11.50	0	49.1s	+491	16°	15°
45	Tmp	108	3907	12:42:09.91	12:42:32.96	0	23.1s	+231	15°	15°
46	Tmp	109	4630	12:43:22.69	12:43:31.52	0	8.8s	+88	14°	14°
47	Tmp	110	5311	12:44:39.31	12:44:46.59	0	7.3s	+73	14°	14°
48	Tmp	112	6518	12:46:49.18	12:46:54.54	0	5.4s	+54	11°	14°
49	Tmp	113	6909	12:47:33.58	12:47:41.11	0	7.5s	+75	13°	13°
50	Tmp	115	7702	12:49:06.83	12:49:12.22	0	5.4s	+54	13°	13°
51	Tmp	115	8376	12:50:22.66	12:50:33.79	0	11.1s	+111	14°	13°
52	Tmp	117	9079	12:51:51.61	12:51:53.19	0	1.6s	+16	7°	13°
53	Tmp	119	9502	12:52:46.61	12:52:44.70	0	1.9s	-19	3°	13°
54	Tmp	119	9910	12:53:35.57	12:53:31.38	0	4.2s	-42	6°	13°
55	Tmp	120	10582	12:55:23.63	12:55:08.49	0	15.1s	-151	13°	13°
56	Tmp	121	11580	12:58:17.08	12:58:11.90	0	5.2s	-52	6°	13°
57	Tmp	125	12308	13:00:12.88	13:03:35.58	0	3m22s	+2027	16°	15°
58	Tmp	126	12967	13:02:13.45	13:04:51.75	0	2m38s	+1583	16°	15°
59	Tmp	128	13810	13:03:56.11	13:06:08.12	0	2m12s	+1320	16°	15°
60	Tmp	131	14517	13:05:10.12	13:07:08.24	0	1m58s	+1181	16°	16°
61	Tmp	132	16120	13:07:23.96	13:10:16.04	0	2m52s	[+1721]	16°	16°
62	Tmp	137	17616	13:10:02.90	13:12:06.71	0	2m03s	+1238	16°	16°

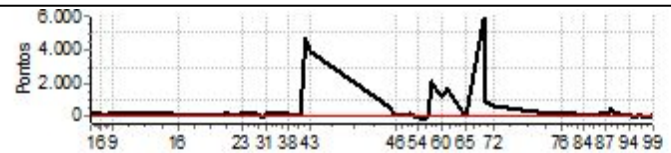
PC	Tp	Trc	DistPC	Ideal	Passagem	Pen	Erro	Pontos	NoPC	AtePC
63	Tmp	142	18970	13:12:45.17	13:13:51.55	0	1m06s	+664	16°	16°
64	Tmp	146	20136	13:15:19.24	13:15:35.65	0	16.4s	+164	12°	16°
65	Tmp	147	20656	13:16:25.19	13:16:35.88	0	10.7s	+107	10°	16°
70	Tmp	159	856	13:25:04.06	--:--:--	0		+6000	16°	16°
71	Tmp	161	1001	13:25:21.94	13:26:40.11	0	1m18s	+782	13°	16°
72	Tmp	169	3058	13:29:22.16	13:30:20.19	0	58.0s	+580	11°	16°

Etapa B	Num	47	Pen	0	PCZ	0	Total PP	17103	PG	0
---------	-----	----	-----	---	-----	---	----------	-------	----	---

73	Tmp	177	1667	13:56:29.33	13:56:45.00	0	15.7s	+157	13°	10°
74	Tmp	179	2492	13:58:06.05	13:58:22.81	0	16.8s	+168	14°	12°
75	Tmp	181	3528	14:00:01.00	14:00:16.26	0	15.3s	+153	14°	13°
76	Tmp	183	4054	14:01:01.89	14:01:20.45	0	18.6s	+186	16°	14°
77	Tmp	187	4597	14:02:31.93	14:02:49.80	0	17.9s	+179	15°	15°
78	Tmp	188	4870	14:03:01.88	14:03:18.30	0	16.4s	+164	14°	15°
79	Tmp	189	5009	14:03:15.07	14:03:30.70	0	15.6s	+156	14°	15°
80	Tmp	193	6290	14:05:35.50	14:05:48.64	0	13.1s	+131	14°	14°
81	Tmp	196	7010	14:07:03.64	14:07:16.63	0	13.0s	+130	15°	14°
82	Tmp	198	7742	14:08:22.32	14:08:35.00	0	12.7s	+127	14°	15°
83	Tmp	203	9329	14:11:10.99	14:11:16.79	0	5.8s	+58	10°	15°
84	Tmp	206	9888	14:12:12.93	14:12:20.30	0	7.4s	+74	15°	15°
85	Tmp	214	11818	14:16:08.42	14:16:14.32	0	5.9s	+59	15°	15°
86	Tmp	216	13589	14:19:24.42	14:19:34.35	0	9.9s	+99	15°	15°
87	Tmp	221	15094	14:22:31.58	14:22:42.99	0	11.4s	+114	13°	15°
88	Tmp	225	15732	14:23:40.79	14:23:59.13	0	18.3s	+183	14°	15°
90	Tmp	230	16045	14:24:31.16	14:25:09.02	0	37.9s	[+379]	11°	14°
91	Tmp	233	17683	14:27:38.27	14:27:44.28	0	6.0s	+60	8°	14°
92	Tmp	235	18264	14:28:48.72	14:29:01.25	0	12.5s	+125	14°	14°
93	Tmp	235	18716	14:29:39.57	14:29:49.51	0	9.9s	+99	14°	14°
94	Tmp	240	20436	14:33:46.18	14:33:46.90	0	0.7s	[+7]	6°	14°
95	Tmp	242	21647	14:36:12.67	14:36:08.04	0	4.6s	-46	12°	14°
96	Tmp	244	22886	14:38:26.46	14:38:31.39	0	4.9s	+49	10°	14°
97	Tmp	249	25065	14:42:51.26	14:42:49.41	0	1.9s	-19	2°	12°
98	Tmp	250	25179	14:43:09.71	14:43:08.23	0	1.5s	-15	3°	8°
99	Tmp	253	25981	14:45:09.26	14:45:23.83	0	14.6s	+146	8°	8°

Etapa C	Num	47	Pen	0	PCZ	0	Total PP	2697	PG	9
---------	-----	----	-----	---	-----	---	----------	------	----	---

n°	13	A PP	17138	15°	B PP	17103	16°	C PP	2697	8°	Tot PP	36938	Col.	14°
----	----	------	-------	-----	------	-------	-----	------	------	----	--------	-------	------	-----



PC	Tp	Trc	DistPC	Ideal	Passagem	Pen	Erro	Pontos	NoPC	AtePC
N	u	48	48 / Flavio Cola / Gabriel Lopes da Silva							
			Cat / NL / Largada / Ligth / 14 / 09:43:00							
m										

PC	Tp	Trc	DistPC	Ideal	Passagem	Pen	Erro	Pontos	NoPC	AtePC
1	Tmp	5	1117	10:19:48.59	10:19:43.41	0	5.2s	-52	9°	17°
2	Tmp	8	1473	10:20:35.01	10:20:26.88	0	8.1s	-81	15°	16°
3	Tmp	12	1769	10:21:08.31	10:21:06.68	0	1.6s	-16	4°	14°
4	Tmp	14	2219	10:21:55.94	10:21:51.90	0	4.0s	-40	12°	14°
5	Tmp	16	2674	10:22:57.98	10:22:48.98	0	9.0s	-90	13°	13°
6	Tmp	17	3343	10:24:04.44	10:24:01.55	0	2.9s	-29	7°	13°
7	Tmp	20	4595	10:27:01.15	10:26:51.32	0	9.8s	-98	13°	13°
8	Tmp	23	5323	10:29:10.09	10:30:13.68	0	1m03s	[+636]	17°	8°
9	Tmp	24	5384	10:29:21.34	10:30:31.08	0	1m09s	[+697]	17°	16°
10	Tmp	26	486	10:50:29.47	10:50:25.67	0	3.8s	-38	11°	13°
11	Tmp	26	1037	10:51:33.46	10:51:29.69	0	3.8s	-38	11°	13°
12	Tmp	27	2092	10:53:24.40	10:53:27.42	0	3.0s	+30	5°	13°
13	Tmp	31	2736	10:54:49.42	10:54:52.17	0	2.8s	+28	8°	13°
14	Tmp	32	3386	10:56:06.20	10:55:54.77	0	11.4s	-114	14°	13°
15	Tmp	37	4608	10:58:52.36	10:58:49.24	0	3.1s	-31	9°	13°
16	Tmp	39	5354	11:00:45.45	11:00:40.20	0	5.3s	-53	11°	13°
17	Tmp	42	417	11:22:20.98	11:22:15.15	0	5.8s	-58	15°	13°
18	Tmp	43	941	11:23:46.72	11:23:38.90	0	7.8s	-78	13°	13°
19	Tmp	45	1729	11:25:20.50	11:25:15.75	0	4.8s	-48	9°	13°
20	Tmp	50	3167	11:28:32.42	11:28:30.70	0	1.7s	-17	4°	13°
21	Tmp	51	3454	11:29:12.32	11:29:06.13	0	6.2s	-62	7°	13°
22	Tmp	52	3576	11:29:30.23	11:29:26.75	0	3.5s	-35	6°	13°
23	Tmp	54	4440	11:31:09.50	11:31:09.37	0	0.1s	[-1]	1°	10°
27	Tmp	58	180	11:33:06.98	12:22:39.52	0	49m32s	+6000	17°	17°
28	Tmp	59	840	11:34:15.56	12:23:42.74	0	49m27s	+6000	17°	17°
29	Tmp	64	2722	11:38:07.44	12:26:59.30	0	48m51s	+6000	17°	17°
30	Tmp	66	280	11:40:35.57	12:28:23.48	0	47m47s	+6000	17°	17°
31	Tmp	70	1240	11:42:10.02	12:29:33.51	0	47m23s	+6000	17°	17°
32	Tmp	72	2080	11:43:55.39	12:30:49.74	0	46m54s	+6000	17°	17°
33	Tmp	75	2910	11:46:52.66	12:32:53.65	0	46m01s	+6000	17°	17°
34	Tmp	75	3363	11:47:45.27	12:33:29.03	0	45m43s	+6000	17°	17°
35	Tmp	79	4626	11:50:01.72	12:35:55.93	0	45m54s	+6000	17°	17°
36	Tmp	81	5021	11:50:53.57	12:36:38.30	0	45m44s	+6000	17°	17°
37	Tmp	83	5285	11:51:41.81	12:37:16.51	0	45m34s	+6000	17°	17°
38	Tmp	85	5886	11:52:55.59	12:38:12.17	0	45m16s	+6000	17°	17°
39	Tmp	92	6994	11:58:18.03	12:42:18.20	0	44m00s	+6000	17°	17°
40	Tmp	94	7397	11:59:07.12	12:43:12.51	0	44m05s	+6000	17°	17°
41	Tmp	98	8237	12:00:53.24	12:45:08.81	0	44m15s	+6000	17°	17°
42	Tmp	102	8883	12:02:26.90	12:48:36.66	0	46m09s	+6000	17°	17°
43	Tmp	102	9424	12:03:29.73	12:49:18.86	0	45m49s	+6000	17°	17°

Etapa A	Num 48	Pen 0	PCZ 0	Total PP 103036	PG 0
----------------	---------------	--------------	--------------	------------------------	-------------

44	Tmp	106	2870	12:41:22.38	12:59:15.17	0	17m52s	+6000	17°	17°
45	Tmp	108	3907	12:43:09.91	13:00:58.46	0	17m48s	+6000	17°	17°
46	Tmp	109	4630	12:44:22.69	13:02:15.44	0	17m52s	+6000	17°	17°
47	Tmp	110	5311	12:45:39.31	13:03:34.47	0	17m55s	+6000	17°	17°
48	Tmp	112	6518	12:47:49.18	13:05:25.79	0	17m36s	+6000	17°	17°
49	Tmp	113	6909	12:48:33.58	13:06:13.50	0	17m39s	+6000	17°	17°
50	Tmp	115	7702	12:50:06.83	13:07:40.16	0	17m33s	+6000	17°	17°
51	Tmp	115	8376	12:51:22.66	13:08:50.03	0	17m27s	+6000	17°	17°
52	Tmp	117	9079	12:52:51.61	13:10:11.63	0	17m20s	+6000	17°	17°
53	Tmp	119	9502	12:53:46.61	13:11:11.09	0	17m24s	+6000	17°	17°
54	Tmp	119	9910	12:54:35.57	13:11:56.47	0	17m20s	+6000	17°	17°
55	Tmp	120	10582	12:56:23.63	13:13:34.26	0	17m10s	+6000	17°	17°
56	Tmp	121	11580	12:59:17.08	13:15:31.60	0	16m14s	+6000	17°	17°
57	Tmp	125	12308	13:01:12.88	13:16:57.00	0	15m44s	+6000	17°	17°
58	Tmp	126	12967	13:03:13.45	13:18:08.74	0	14m55s	+6000	17°	17°
59	Tmp	128	13810	13:04:56.11	13:20:05.64	0	15m09s	+6000	17°	17°
60	Tmp	131	14517	13:06:10.12	13:21:23.83	0	15m13s	+6000	17°	17°
61	Tmp	132	16120	13:08:23.96	13:23:05.42	0	14m41s	+6000	17°	17°
62	Tmp	137	17616	13:11:02.90	13:24:59.35	0	13m56s	+6000	17°	17°

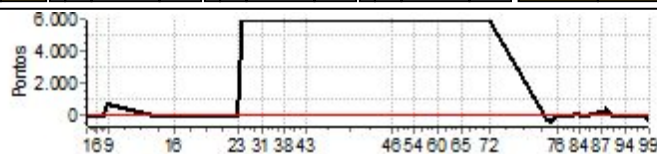
PC	Tp	Trc	DistPC	Ideal	Passagem	Pen	Erro	Pontos	NoPC	AtePC
63	Tmp	142	18970	13:13:45.17	13:27:29.19	0	13m44s	+6000	17°	17°
64	Tmp	146	20136	13:16:19.24	13:29:33.67	0	13m14s	+6000	17°	17°
65	Tmp	147	20656	13:17:25.19	13:30:21.61	0	12m56s	+6000	17°	17°
70	Tmp	159	856	13:26:04.06	--:--:--	0		+6000	15°	17°
71	Tmp	161	1001	13:26:21.94	13:36:59.15	0	10m37s	+6000	17°	17°
72	Tmp	169	3058	13:30:22.16	13:40:08.99	0	9m46s	+5868	17°	17°

Etapa B	Num 48	Pen 0	PCZ 0	Total PP 149868	PG 0
----------------	---------------	--------------	--------------	------------------------	-------------

73	Tmp	177	1667	13:57:29.33	13:56:57.55	0	31.8s	-318	15°	15°
74	Tmp	179	2492	13:59:06.05	13:58:25.90	0	40.2s	-402	15°	16°
75	Tmp	181	3528	14:01:01.00	14:00:30.48	0	30.5s	-305	16°	16°
76	Tmp	183	4054	14:02:01.89	14:01:57.26	0	4.6s	-46	9°	16°
77	Tmp	187	4597	14:03:31.93	14:03:20.08	0	11.9s	-119	12°	16°
78	Tmp	188	4870	14:04:01.88	14:03:58.82	0	3.1s	-31	9°	16°
79	Tmp	189	5009	14:04:15.07	14:04:13.51	0	1.6s	-16	5°	16°
80	Tmp	193	6290	14:06:35.50	14:06:34.23	0	1.3s	-13	1°	16°
81	Tmp	196	7010	14:08:03.64	14:08:05.67	0	2.0s	+20	5°	15°
82	Tmp	198	7742	14:09:22.32	14:09:25.09	0	2.8s	+28	6°	14°
83	Tmp	203	9329	14:12:10.99	14:12:16.11	0	5.1s	+51	8°	14°
84	Tmp	206	9888	14:13:12.93	14:13:09.03	0	3.9s	-39	12°	14°
85	Tmp	214	11818	14:17:08.42	14:17:09.43	0	1.0s	[+10]	4°	14°
86	Tmp	216	13589	14:20:24.42	14:20:33.82	0	9.4s	+94	14°	14°
87	Tmp	221	15094	14:23:31.58	14:23:46.89	0	15.3s	+153	15°	14°
88	Tmp	225	15732	14:24:40.79	14:24:58.07	0	17.3s	+173	13°	14°
90	Tmp	230	16045	14:25:31.16	14:26:10.14	0	39.0s	[+390]	12°	13°
91	Tmp	233	17683	14:28:38.27	14:28:27.57	0	10.7s	-107	13°	12°
92	Tmp	235	18264	14:29:48.72	14:29:46.55	0	2.2s	-22	7°	12°
93	Tmp	235	18716	14:30:39.57	14:30:35.21	0	4.4s	-44	11°	12°
94	Tmp	240	20436	14:34:46.18	14:34:42.83	0	3.4s	-34	12°	12°
95	Tmp	242	21647	14:37:12.67	14:37:08.46	0	4.2s	-42	11°	12°
96	Tmp	244	22886	14:39:26.46	14:39:23.10	0	3.4s	-34	6°	12°
97	Tmp	249	25065	14:43:51.26	14:43:56.08	0	4.8s	+48	4°	10°
98	Tmp	250	25179	14:44:09.71	14:44:09.79	0	0.1s	+1	1°	7°
99	Tmp	253	25981	14:46:09.26	14:45:30.70	0	38.6s	-386	10°	7°

Etapa C	Num 48	Pen 0	PCZ 0	Total PP 2526	PG 10
----------------	---------------	--------------	--------------	----------------------	--------------

n° 14	A PP 103036	17°	B PP 149868	17°	C PP 2526	7°	Tot PP 255430	Col. 17°
--------------	--------------------	------------	--------------------	------------	------------------	-----------	----------------------	-----------------



Performance Individual

PC	Tp	Trc	DistPC	Ideal	Passagem	Pen	Erro	Pontos	NoPC	AtePC
N u m	49	49 / Alessandro Siqueira Eugenio / Sindalva								
		Cat / NL / Largada Ligth / 15 / 09:44:00								
PC	Tp	Trc	DistPC	Ideal	Passagem	Pen	Erro	Pontos	NoPC	AtePC
1	Tmp	5	1117	10:20:48.59	10:20:54.11	0	5.5s	+55	10°	8°
2	Tmp	8	1473	10:21:35.01	10:21:37.97	0	3.0s	+30	7°	7°
3	Tmp	12	1769	10:22:08.31	10:22:17.80	0	9.5s	+95	13°	9°
4	Tmp	14	2219	10:22:55.94	10:22:56.04	0	0.1s	+1	2°	6°
5	Tmp	16	2674	10:23:57.98	10:24:02.20	0	4.2s	+42	9°	7°
6	Tmp	17	3343	10:25:04.44	10:25:08.79	0	4.4s	+44	12°	7°
7	Tmp	20	4595	10:28:01.15	10:28:03.62	0	2.5s	+25	4°	7°
8	Tmp	23	5323	10:30:10.09	10:30:05.50	0	4.6s	-46	4°	5°
9	Tmp	24	5384	10:30:21.34	10:30:24.38	0	3.0s	+30	3°	5°
10	Tmp	26	486	10:51:29.47	10:51:30.70	0	1.2s	+12	3°	5°
11	Tmp	26	1037	10:52:33.46	10:52:33.28	0	0.2s	[-2]	3°	5°
12	Tmp	27	2092	10:54:24.40	10:54:31.83	0	7.4s	+74	11°	5°
13	Tmp	31	2736	10:55:49.42	10:55:52.54	0	3.1s	+31	9°	5°
14	Tmp	32	3386	10:57:06.20	10:57:07.59	0	1.4s	+14	8°	5°
15	Tmp	37	4608	10:59:52.36	10:59:54.55	0	2.2s	+22	8°	5°
16	Tmp	39	5354	11:01:45.45	11:01:45.65	0	0.2s	[+2]	2°	5°
17	Tmp	42	417	11:23:20.98	11:23:18.24	0	2.7s	-27	13°	5°
18	Tmp	43	941	11:24:46.72	11:24:44.15	0	2.6s	-26	8°	5°
19	Tmp	45	1729	11:26:20.50	11:26:18.38	0	2.1s	-21	6°	5°
20	Tmp	50	3167	11:29:32.42	11:29:42.30	0	9.9s	+99	11°	5°
21	Tmp	51	3454	11:30:12.32	11:30:28.11	0	15.8s	+158	12°	5°
22	Tmp	52	3576	11:30:30.23	11:30:43.47	0	13.2s	+132	10°	6°
23	Tmp	54	4440	11:32:09.50	11:32:06.03	0	3.5s	-35	7°	6°
27	Tmp	58	180	11:34:06.98	11:34:52.27	0	45.3s	[+453]	13°	6°
28	Tmp	59	840	11:35:15.56	11:35:54.10	0	38.5s	[+385]	13°	7°
29	Tmp	64	2722	11:39:07.44	11:39:20.86	0	13.4s	+134	13°	7°
30	Tmp	66	280	11:41:35.57	11:41:32.28	0	3.3s	-33	10°	7°
31	Tmp	70	1240	11:43:10.02	11:43:03.92	0	6.1s	-61	10°	7°
32	Tmp	72	2080	11:44:55.39	11:44:49.60	0	5.8s	-58	12°	7°
33	Tmp	75	2910	11:47:52.66	11:47:48.21	0	4.5s	-45	9°	7°
34	Tmp	75	3363	11:48:45.27	11:48:39.69	0	5.6s	-56	11°	7°
35	Tmp	79	4626	11:51:01.72	11:50:57.49	0	4.2s	-42	7°	7°
36	Tmp	81	5021	11:51:53.57	11:51:47.19	0	6.4s	-64	10°	7°
37	Tmp	83	5285	11:52:41.81	11:52:35.64	0	6.2s	-62	13°	6°
38	Tmp	85	5886	11:53:55.59	11:53:45.72	0	9.9s	-99	15°	7°
39	Tmp	92	6994	11:59:18.03	11:59:15.25	0	2.8s	-28	4°	7°
40	Tmp	94	7397	12:00:07.12	12:00:05.52	0	1.6s	-16	1°	6°
41	Tmp	98	8237	12:01:53.24	12:01:47.92	0	5.3s	-53	8°	7°
42	Tmp	102	8883	12:03:26.90	12:03:22.89	0	4.0s	-40	8°	6°
43	Tmp	102	9424	12:04:29.73	12:04:25.48	0	4.3s	-43	10°	8°

Etapa A	Num 49	Pen 0	PCZ 0	Total PP 1853	PG 9
----------------	---------------	--------------	--------------	----------------------	-------------

44	Tmp	106	2870	12:42:22.38	12:42:23.42	0	1.0s	[+10]	6°	6°
45	Tmp	108	3907	12:44:09.91	12:44:09.49	0	0.4s	-4	3°	4°
46	Tmp	109	4630	12:45:22.69	12:45:23.77	0	1.1s	+11	3°	3°
47	Tmp	110	5311	12:46:39.31	12:46:37.52	0	1.8s	-18	5°	6°
48	Tmp	112	6518	12:48:49.18	12:48:48.84	0	0.3s	-3	1°	2°
49	Tmp	113	6909	12:49:33.58	12:49:32.98	0	0.6s	-6	4°	2°
50	Tmp	115	7702	12:51:06.83	12:51:04.78	0	2.1s	-21	7°	2°
51	Tmp	115	8376	12:52:22.66	12:52:18.78	0	3.9s	-39	8°	4°
52	Tmp	117	9079	12:53:51.61	12:53:43.67	0	7.9s	-79	11°	8°
53	Tmp	119	9502	12:54:46.61	12:54:45.97	0	0.6s	-6	1°	6°
54	Tmp	119	9910	12:55:35.57	12:55:31.04	0	4.5s	-45	7°	4°
55	Tmp	120	10582	12:57:23.63	12:57:17.08	0	6.6s	-66	5°	4°
56	Tmp	121	11580	13:00:17.08	13:00:10.85	0	6.2s	-62	8°	5°
57	Tmp	125	12308	13:02:12.88	13:02:02.46	0	10.4s	-104	14°	8°
58	Tmp	126	12967	13:04:13.45	13:04:05.18	0	8.3s	-83	7°	6°
59	Tmp	128	13810	13:05:56.11	13:05:54.98	0	1.1s	-11	2°	6°
60	Tmp	131	14517	13:07:10.12	13:07:04.83	0	5.3s	-53	9°	6°
61	Tmp	132	16120	13:09:23.96	13:09:18.39	0	5.6s	-56	9°	6°
62	Tmp	137	17616	13:12:02.90	13:11:53.59	0	9.3s	-93	12°	7°

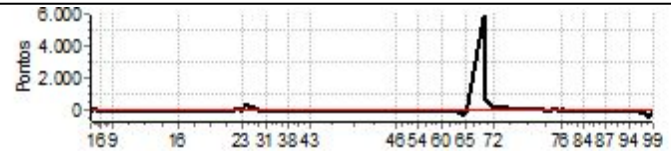
PC	Tp	Trc	DistPC	Ideal	Passagem	Pen	Erro	Pontos	NoPC	AtePC
63	Tmp	142	18970	13:14:45.17	13:14:39.16	0	6.0s	-60	10°	7°
64	Tmp	146	20136	13:17:19.24	13:16:57.31	0	21.9s	-219	16°	7°
65	Tmp	147	20656	13:18:25.19	13:18:14.42	0	10.8s	-108	11°	7°
70	Tmp	159	856	13:27:04.06	--:--:--:--	0		+6000	14°	14°
71	Tmp	161	1001	13:27:21.94	13:28:23.99	0	1m02s	[+621]	11°	12°
72	Tmp	169	3058	13:31:22.16	13:31:48.61	0	26.5s	+265	9°	11°

Etapa B	Num 49	Pen 0	PCZ 0	Total PP 7412	PG 6
----------------	---------------	--------------	--------------	----------------------	-------------

73	Tmp	177	1667	13:58:29.33	13:58:33.69	0	4.4s	+44	7°	5°
74	Tmp	179	2492	14:00:06.05	14:00:21.14	0	15.1s	[+151]	12°	7°
75	Tmp	181	3528	14:02:01.00	14:02:05.46	0	4.5s	+45	10°	8°
76	Tmp	183	4054	14:03:01.89	14:03:10.05	0	8.2s	+82	12°	9°
77	Tmp	187	4597	14:04:31.93	14:04:43.16	0	11.2s	+112	11°	9°
78	Tmp	188	4870	14:05:01.88	14:05:09.97	0	8.1s	+81	11°	9°
79	Tmp	189	5009	14:05:15.07	14:05:19.56	0	4.5s	+45	11°	9°
80	Tmp	193	6290	14:07:35.50	14:07:41.09	0	5.6s	+56	7°	9°
81	Tmp	196	7010	14:09:03.64	14:09:09.20	0	5.6s	+56	8°	9°
82	Tmp	198	7742	14:10:22.32	14:10:29.66	0	7.3s	+73	9°	9°
83	Tmp	203	9329	14:13:10.99	14:13:17.87	0	6.9s	+69	11°	9°
84	Tmp	206	9888	14:14:12.93	14:14:14.97	0	2.0s	+20	6°	9°
85	Tmp	214	11818	14:18:08.42	14:18:09.89	0	1.5s	+15	7°	9°
86	Tmp	216	13589	14:21:24.42	14:21:24.55	0	0.1s	+1	1°	9°
87	Tmp	221	15094	14:24:31.58	14:24:32.92	0	1.3s	+13	4°	9°
88	Tmp	225	15732	14:25:40.79	14:25:47.15	0	6.4s	+64	3°	9°
90	Tmp	230	16045	14:26:31.16	14:26:21.38	0	9.8s	-98	5°	8°
91	Tmp	233	17683	14:29:38.27	14:29:40.22	0	2.0s	+20	4°	5°
92	Tmp	235	18264	14:30:48.72	14:30:50.87	0	2.2s	+22	6°	7°
93	Tmp	235	18716	14:31:39.57	14:31:40.46	0	0.9s	[+9]	1°	5°
94	Tmp	240	20436	14:35:46.18	14:35:46.81	0	0.6s	+6	4°	5°
95	Tmp	242	21647	14:38:12.67	14:38:12.86	0	0.2s	+2	4°	5°
96	Tmp	244	22886	14:40:26.46	14:40:16.65	0	9.8s	-98	14°	6°
97	Tmp	249	25065	14:44:51.26	14:44:22.65	0	28.6s	-286	12°	5°
98	Tmp	250	25179	14:45:09.71	14:44:34.04	0	35.7s	-357	7°	4°
99	Tmp	253	25981	14:47:09.26	14:47:03.20	0	6.1s	-61	4°	3°

Etapa C	Num 49	Pen 0	PCZ 0	Total PP 1726	PG 14
----------------	---------------	--------------	--------------	----------------------	--------------

n° 15	A PP 1853	8°	B PP 7412	11°	C PP 1726	3°	Tot PP 10991	Col. 6°
--------------	------------------	-----------	------------------	------------	------------------	-----------	---------------------	----------------



Performance Individual

PC	Tp	Trc	DistPC	Ideal	Passagem	Pen	Erro	Pontos	NoPC	AtePC
N	50	50 / Eduardo Fernandes Pessoa								
		Cat / NL / Largada Ligth / 16 / 09:45:00								
PC	Tp	Trc	DistPC	Ideal	Passagem	Pen	Erro	Pontos	NoPC	AtePC
1	Tmp	5	1117	10:21:48.59	10:21:55.83	0	7.2s	+72	14°	12°
2	Tmp	8	1473	10:22:35.01	10:22:39.96	0	5.0s	+50	11°	11°
3	Tmp	12	1769	10:23:08.31	10:23:16.33	0	8.0s	+80	11°	11°
4	Tmp	14	2219	10:23:55.94	10:23:52.82	0	3.1s	-31	10°	10°
5	Tmp	16	2674	10:24:57.98	10:24:42.53	0	15.5s	-155	16°	15°
6	Tmp	17	3343	10:26:04.44	10:25:48.65	0	15.8s	-158	16°	15°
7	Tmp	20	4595	10:29:01.15	10:28:07.44	0	53.7s	-537	17°	17°
8	Tmp	23	5323	10:31:10.09	10:30:10.56	0	59.5s	-595	16°	17°
9	Tmp	24	5384	10:31:21.34	10:30:28.05	0	53.3s	-533	16°	17°
10	Tmp	26	486	10:52:29.47	10:52:40.75	0	11.3s	+113	15°	17°
11	Tmp	26	1037	10:53:33.46	10:53:50.12	0	16.7s	+167	15°	17°
12	Tmp	27	2092	10:55:24.40	10:55:35.62	0	11.2s	+112	15°	17°
13	Tmp	31	2736	10:56:49.42	10:57:11.62	0	22.2s	[+222]	16°	17°
14	Tmp	32	3386	10:58:06.20	10:58:04.60	0	1.6s	-16	10°	17°
15	Tmp	37	4608	11:00:52.36	11:01:09.19	0	16.8s	+168	14°	17°
16	Tmp	39	5354	11:02:45.45	11:02:53.91	0	8.5s	+85	14°	16°
17	Tmp	42	417	11:24:20.98	11:24:22.20	0	1.2s	+12	9°	16°
18	Tmp	43	941	11:25:46.72	11:26:00.45	0	13.7s	+137	15°	16°
19	Tmp	45	1729	11:27:20.50	11:27:28.30	0	7.8s	+78	12°	16°
20	Tmp	50	3167	11:30:32.42	11:30:42.91	0	10.5s	+105	13°	16°
21	Tmp	51	3454	11:31:12.32	11:31:24.71	0	12.4s	+124	9°	15°
22	Tmp	52	3576	11:31:30.23	11:31:50.49	0	20.3s	[+203]	14°	15°
23	Tmp	54	4440	11:33:09.50	11:33:17.72	0	8.2s	+82	11°	15°
27	Tmp	58	180	11:35:06.98	11:35:26.68	0	19.7s	+197	11°	13°
28	Tmp	59	840	11:36:15.56	11:36:27.80	0	12.2s	+122	10°	13°
29	Tmp	64	2722	11:40:07.44	11:40:10.89	0	3.5s	+35	6°	13°
30	Tmp	66	280	11:42:35.57	11:42:25.62	0	10.0s	-100	14°	13°
31	Tmp	70	1240	11:44:10.02	11:44:17.26	0	7.2s	+72	11°	13°
32	Tmp	72	2080	11:45:55.39	11:45:55.80	0	0.4s	+4	4°	13°
33	Tmp	75	2910	11:48:52.66	11:48:22.68	0	30.0s	-300	15°	13°
34	Tmp	75	3363	11:49:45.27	11:49:49.73	0	4.5s	+45	9°	13°
35	Tmp	79	4626	11:52:01.72	11:52:12.79	0	11.1s	+111	13°	13°
36	Tmp	81	5021	11:52:53.57	11:53:00.44	0	6.9s	+69	11°	13°
37	Tmp	83	5285	11:53:41.81	11:53:42.80	0	1.0s	[+10]	5°	13°
38	Tmp	85	5886	11:54:55.59	11:54:54.69	0	0.9s	[-9]	1°	13°
39	Tmp	92	6994	12:00:18.03	12:00:29.34	0	11.3s	+113	12°	13°
40	Tmp	94	7397	12:01:07.12	12:01:18.06	0	10.9s	+109	10°	13°
41	Tmp	98	8237	12:02:53.24	12:02:52.70	0	0.5s	-5	3°	12°
42	Tmp	102	8883	12:04:26.90	12:03:51.66	0	35.2s	-352	13°	12°
43	Tmp	102	9424	12:05:29.73	12:05:26.89	0	2.8s	-28	8°	12°

Etapa A	Num 50	Pen 0	PCZ 0	Total PP 5072	PG 5
----------------	---------------	--------------	--------------	----------------------	-------------

44	Tmp	106	2870	12:43:22.38	12:43:43.81	0	21.4s	+214	13°	12°
45	Tmp	108	3907	12:45:09.91	12:45:32.82	0	22.9s	[+229]	14°	14°
46	Tmp	109	4630	12:46:22.69	12:46:39.92	0	17.2s	+172	15°	15°
47	Tmp	110	5311	12:47:39.31	12:47:51.42	0	12.1s	+121	15°	15°
48	Tmp	112	6518	12:49:49.18	12:49:55.72	0	6.5s	+65	13°	15°
49	Tmp	113	6909	12:50:33.58	12:50:39.88	0	6.3s	+63	12°	15°
50	Tmp	115	7702	12:52:06.83	12:52:09.98	0	3.2s	+32	8°	14°
51	Tmp	115	8376	12:53:22.66	12:53:31.18	0	8.5s	+85	12°	14°
52	Tmp	117	9079	12:54:51.61	12:55:00.50	0	8.9s	+89	12°	14°
53	Tmp	119	9502	12:55:46.61	12:55:56.34	0	9.7s	+97	9°	14°
54	Tmp	119	9910	12:56:35.57	12:56:42.24	0	6.7s	+67	9°	14°
55	Tmp	120	10582	12:58:23.63	12:58:15.26	0	8.4s	-84	7°	14°
56	Tmp	121	11580	13:01:17.08	13:00:41.29	0	35.8s	-358	16°	14°
57	Tmp	125	12308	13:03:12.88	13:03:21.98	0	9.1s	+91	13°	13°
58	Tmp	126	12967	13:05:13.45	13:05:31.59	0	18.1s	+181	11°	13°
59	Tmp	128	13810	13:06:56.11	13:07:11.56	0	15.5s	+155	15°	13°
60	Tmp	131	14517	13:08:10.12	13:08:20.63	0	10.5s	+105	11°	13°
61	Tmp	132	16120	13:10:23.96	13:10:30.25	0	6.3s	+63	10°	13°
62	Tmp	137	17616	13:13:02.90	13:12:53.22	0	9.7s	-97	13°	13°

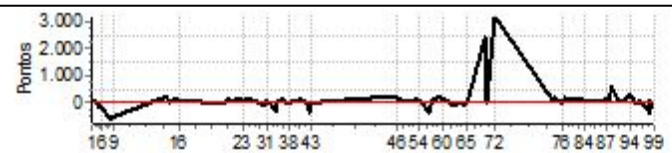
PC	Tp	Trc	DistPC	Ideal	Passagem	Pen	Erro	Pontos	NoPC	AtePC
63	Tmp	142	18970	13:15:45.17	13:15:46.41	0	1.2s	+12	3°	13°
64	Tmp	146	20136	13:18:19.24	13:18:12.62	0	6.6s	-66	7°	13°
65	Tmp	147	20656	13:19:25.19	13:19:30.71	0	5.5s	+55	9°	12°
70	Tmp	159	856	13:28:04.06	13:32:07.07	0	4m03s	+2430	12°	11°
71	Tmp	161	1001	13:28:21.94	13:28:24.27	0	2.3s	+23	2°	11°
72	Tmp	169	3058	13:32:22.16	13:37:42.11	0	5m20s	+3200	16°	12°

Etapa B	Num 50	Pen 0	PCZ 0	Total PP 7925	PG 5
----------------	---------------	--------------	--------------	----------------------	-------------

73	Tmp	177	1667	13:59:29.33	13:59:39.79	0	10.5s	+105	11°	9°
74	Tmp	179	2492	14:01:06.05	14:01:22.73	0	16.7s	+167	13°	11°
75	Tmp	181	3528	14:03:01.00	14:03:05.55	0	4.6s	+46	11°	10°
76	Tmp	183	4054	14:04:01.89	14:04:04.01	0	2.1s	+21	6°	10°
77	Tmp	187	4597	14:05:31.93	14:05:48.63	0	16.7s	+167	14°	11°
78	Tmp	188	4870	14:06:01.88	14:06:19.62	0	17.7s	+177	16°	11°
79	Tmp	189	5009	14:06:15.07	14:06:32.16	0	17.1s	+171	16°	12°
80	Tmp	193	6290	14:08:35.50	14:08:49.78	0	14.3s	+143	15°	12°
81	Tmp	196	7010	14:10:03.64	14:10:13.30	0	9.7s	+97	13°	12°
82	Tmp	198	7742	14:11:22.32	14:11:31.93	0	9.6s	+96	13°	12°
83	Tmp	203	9329	14:14:10.99	14:14:22.72	0	11.7s	+117	13°	12°
84	Tmp	206	9888	14:15:12.93	14:15:16.15	0	3.2s	+32	10°	12°
85	Tmp	214	11818	14:19:08.42	14:19:12.84	0	4.4s	+44	12°	13°
86	Tmp	216	13589	14:22:24.42	14:22:31.31	0	6.9s	+69	12°	13°
87	Tmp	221	15094	14:25:31.58	14:25:43.24	0	11.7s	+117	14°	13°
88	Tmp	225	15732	14:26:40.79	14:26:56.96	0	16.2s	+162	12°	13°
90	Tmp	230	16045	14:27:31.16	14:28:31.14	0	1m00s	[+600]	14°	11°
91	Tmp	233	17683	14:30:38.27	14:30:47.48	0	9.2s	+92	12°	11°
92	Tmp	235	18264	14:31:48.72	14:31:53.38	0	4.7s	+47	11°	11°
93	Tmp	235	18716	14:32:39.57	14:32:42.67	0	3.1s	+31	9°	11°
94	Tmp	240	20436	14:36:46.18	14:37:14.31	0	28.1s	+281	15°	13°
95	Tmp	242	21647	14:39:12.67	14:39:11.85	0	0.8s	[-8]	5°	13°
96	Tmp	244	22886	14:41:26.46	14:41:30.85	0	4.4s	+44	8°	13°
97	Tmp	249	25065	14:45:51.26	14:45:17.03	0	34.2s	-342	13°	13°
98	Tmp	250	25179	14:46:09.71	14:46:15.95	0	6.2s	+62	4°	9°
99	Tmp	253	25981	14:48:09.26	14:47:51.57	0	17.7s	-177	9°	10°

Etapa C	Num 50	Pen 0	PCZ 0	Total PP 2807	PG 7
----------------	---------------	--------------	--------------	----------------------	-------------

n° 16	A PP 5072	12°	B PP 7925	12°	C PP 2807	10°	Tot PP 15804	Col. 10°
--------------	------------------	------------	------------------	------------	------------------	------------	---------------------	-----------------



Performance Individual

PC	Tp	Trc	DistPC	Ideal	Passagem	Pen	Erro	Pontos	NoPC	AtePC
N	51	51 / Andre Julio								
		Cat / NL / Largada Ligth / 17 / 09:46:00								
m	3°									
PC	Tp	Trc	DistPC	Ideal	Passagem	Pen	Erro	Pontos	NoPC	AtePC
1	Tmp	5	1117	10:22:48.59	10:22:51.22	0	2.6s	+26	6°	6°
2	Tmp	8	1473	10:23:35.01	10:23:39.25	0	4.2s	+42	10°	6°
3	Tmp	12	1769	10:24:08.31	10:24:13.66	0	5.4s	+54	8°	8°
4	Tmp	14	2219	10:24:55.94	10:24:58.42	0	2.5s	+25	9°	7°
5	Tmp	16	2674	10:25:57.98	10:25:56.16	0	1.8s	-18	5°	5°
6	Tmp	17	3343	10:27:04.44	10:27:07.72	0	3.3s	+33	8°	6°
7	Tmp	20	4595	10:30:01.15	10:29:58.02	0	3.1s	-31	7°	6°
8	Tmp	23	5323	10:32:10.09	10:31:44.40	0	25.7s	-257	12°	10°
9	Tmp	24	5384	10:32:21.34	10:31:59.66	0	21.7s	-217	12°	9°
10	Tmp	26	486	10:53:29.47	10:53:27.21	0	2.3s	-23	6°	10°
11	Tmp	26	1037	10:54:33.46	10:54:35.83	0	2.4s	+24	10°	10°
12	Tmp	27	2092	10:56:24.40	10:56:32.24	0	7.8s	+78	12°	10°
13	Tmp	31	2736	10:57:49.42	10:57:53.99	0	4.6s	+46	11°	10°
14	Tmp	32	3386	10:59:06.20	10:59:16.12	0	9.9s	+99	12°	11°
15	Tmp	37	4608	11:01:52.36	11:01:59.69	0	7.3s	+73	11°	10°
16	Tmp	39	5354	11:03:45.45	11:03:48.02	0	2.6s	+26	9°	10°
17	Tmp	42	417	11:25:20.98	11:25:21.41	0	0.4s	+4	4°	10°
18	Tmp	43	941	11:26:46.72	11:26:48.38	0	1.7s	+17	5°	9°
19	Tmp	45	1729	11:28:20.50	11:28:26.16	0	5.7s	+57	10°	10°
20	Tmp	50	3167	11:31:32.42	11:31:35.70	0	3.3s	+33	7°	10°
21	Tmp	51	3454	11:32:12.32	11:32:20.08	0	7.8s	+78	8°	8°
22	Tmp	52	3576	11:32:30.23	11:32:38.98	0	8.8s	+88	9°	8°
23	Tmp	54	4440	11:34:09.50	11:34:08.87	0	0.6s	[-6]	3°	8°
27	Tmp	58	180	11:36:06.98	11:36:19.82	0	12.8s	[+128]	9°	7°
28	Tmp	59	840	11:37:15.56	11:37:18.35	0	2.8s	+28	5°	6°
29	Tmp	64	2722	11:41:07.44	11:41:09.08	0	1.6s	+16	5°	6°
30	Tmp	66	280	11:43:35.57	11:43:33.05	0	2.5s	-25	8°	6°
31	Tmp	70	1240	11:45:10.02	11:45:10.79	0	0.8s	[+8]	2°	6°
32	Tmp	72	2080	11:46:55.39	11:46:55.43	0	0.0s	0	1°	6°
33	Tmp	75	2910	11:49:52.66	11:49:51.14	0	1.5s	-15	5°	6°
34	Tmp	75	3363	11:50:45.27	11:50:56.30	0	11.0s	[+110]	13°	6°
35	Tmp	79	4626	11:53:01.72	11:53:11.08	0	9.4s	+94	11°	6°
36	Tmp	81	5021	11:53:53.57	11:53:56.16	0	2.6s	+26	6°	6°
37	Tmp	83	5285	11:54:41.81	11:54:45.45	0	3.6s	+36	11°	7°
38	Tmp	85	5886	11:55:55.59	11:55:56.94	0	1.4s	+14	5°	6°
39	Tmp	92	6994	12:01:18.03	12:01:23.97	0	5.9s	+59	7°	6°
40	Tmp	94	7397	12:02:07.12	12:02:13.08	0	6.0s	+60	7°	7°
41	Tmp	98	8237	12:03:53.24	12:03:55.18	0	1.9s	+19	7°	6°
42	Tmp	102	8883	12:05:26.90	12:05:37.34	0	10.4s	+104	10°	7°
43	Tmp	102	9424	12:06:29.73	12:06:30.12	0	0.4s	+4	3°	6°

Etapa A	Num 51	Pen 0	PCZ 1	Total PP 1849	PG 11
----------------	---------------	--------------	--------------	----------------------	--------------

44	Tmp	106	2870	12:44:22.38	12:44:21.80	0	0.6s	-6	3°	3°
45	Tmp	108	3907	12:46:09.91	12:46:14.92	0	5.0s	+50	12°	7°
46	Tmp	109	4630	12:47:22.69	12:47:29.29	0	6.6s	+66	12°	11°
47	Tmp	110	5311	12:48:39.31	12:48:45.00	0	5.7s	+57	13°	11°
48	Tmp	112	6518	12:50:49.18	12:51:00.67	0	11.5s	+115	14°	12°
49	Tmp	113	6909	12:51:33.58	12:51:48.29	0	14.7s	+147	14°	12°
50	Tmp	115	7702	12:53:06.83	12:53:19.93	0	13.1s	+131	14°	12°
51	Tmp	115	8376	12:54:22.66	12:54:29.08	0	6.4s	+64	10°	12°
52	Tmp	117	9079	12:55:51.61	12:55:54.74	0	3.1s	+31	9°	12°
53	Tmp	119	9502	12:56:46.61	12:56:56.64	0	10.0s	+100	10°	12°
54	Tmp	119	9910	12:57:35.57	12:57:42.72	0	7.2s	+72	11°	12°
55	Tmp	120	10582	12:59:23.63	12:59:36.75	0	13.1s	+131	11°	12°
56	Tmp	121	11580	13:02:17.08	13:02:33.50	0	16.4s	+164	14°	12°
57	Tmp	125	12308	13:04:12.88	13:04:12.08	0	0.8s	[-8]	2°	12°
58	Tmp	126	12967	13:06:13.45	13:05:59.32	0	14.1s	-141	9°	12°
59	Tmp	128	13810	13:07:56.11	13:07:58.55	0	2.4s	+24	6°	12°
60	Tmp	131	14517	13:09:10.12	13:09:16.41	0	6.3s	+63	10°	12°
61	Tmp	132	16120	13:11:23.96	13:11:27.93	0	4.0s	+40	7°	12°
62	Tmp	137	17616	13:14:02.90	13:14:11.79	0	8.9s	+89	11°	11°

PC	Tp	Trc	DistPC	Ideal	Passagem	Pen	Erro	Pontos	NoPC	AtePC
63	Tmp	142	18970	13:16:45.17	13:17:04.37	0	19.2s	[+192]	13°	11°
64	Tmp	146	20136	13:19:19.24	13:19:37.42	0	18.2s	+182	13°	11°
65	Tmp	147	20656	13:20:25.19	13:20:28.97	0	3.8s	+38	7°	11°
70	Tmp	159	856	13:29:04.06	13:29:11.85	0	7.8s	+78	6°	9°
71	Tmp	161	1001	13:29:21.94	13:29:34.29	0	12.4s	+124	6°	8°
72	Tmp	169	3058	13:33:22.16	13:33:23.72	0	1.6s	+16	6°	7°

Etapa B	Num 51	Pen 0	PCZ 0	Total PP 1929	PG 10
----------------	---------------	--------------	--------------	----------------------	--------------

73	Tmp	177	1667	14:00:29.33	14:00:36.20	0	6.9s	+69	10°	8°
74	Tmp	179	2492	14:02:06.05	14:02:10.50	0	4.5s	+45	7°	8°
75	Tmp	181	3528	14:04:01.00	14:04:10.48	0	9.5s	+95	13°	9°
76	Tmp	183	4054	14:05:01.89	14:05:06.70	0	4.8s	+48	10°	8°
77	Tmp	187	4597	14:06:31.93	14:06:36.22	0	4.3s	+43	8°	8°
78	Tmp	188	4870	14:07:01.88	14:07:06.06	0	4.2s	+42	10°	8°
79	Tmp	189	5009	14:07:15.07	14:07:17.74	0	2.7s	+27	10°	8°
80	Tmp	193	6290	14:09:35.50	14:09:39.30	0	3.8s	+38	5°	8°
81	Tmp	196	7010	14:11:03.64	14:11:03.80	0	0.2s	[+2]	1°	8°
82	Tmp	198	7742	14:12:22.32	14:12:28.77	0	6.5s	+65	8°	8°
83	Tmp	203	9329	14:15:10.99	14:15:23.53	0	12.5s	+125	14°	8°
84	Tmp	206	9888	14:16:12.93	14:16:15.76	0	2.8s	+28	8°	8°
85	Tmp	214	11818	14:20:08.42	14:20:08.20	0	0.2s	-2	3°	8°
86	Tmp	216	13589	14:23:24.42	14:23:33.08	0	8.7s	+87	13°	8°
87	Tmp	221	15094	14:26:31.58	14:26:37.72	0	6.1s	+61	12°	8°
88	Tmp	225	15732	14:27:40.79	14:27:48.38	0	7.6s	+76	5°	8°
90	Tmp	230	16045	14:28:31.16	14:28:55.85	0	24.7s	+247	8°	7°
91	Tmp	233	17683	14:31:38.27	14:31:45.11	0	6.8s	+68	11°	8°
92	Tmp	235	18264	14:32:48.72	14:33:02.65	0	13.9s	+139	15°	9°
93	Tmp	235	18716	14:33:39.57	14:33:44.19	0	4.6s	+46	12°	9°
94	Tmp	240	20436	14:37:46.18	14:37:48.03	0	1.9s	+19	10°	9°
95	Tmp	242	21647	14:40:12.67	14:40:16.30	0	3.6s	+36	10°	9°
96	Tmp	244	22886	14:42:26.46	14:42:34.06	0	7.6s	+76	13°	9°
97	Tmp	249	25065	14:46:51.26	14:47:17.69	0	26.4s	[+264]	11°	6°
98	Tmp	250	25179	14:47:09.71	14:47:35.23	0	25.5s	+255	6°	5°
99	Tmp	253	25981	14:49:09.26	14:49:12.34	0	3.1s	+31	1°	4°

Etapa C	Num 51	Pen 0	PCZ 0	Total PP 1768	PG 13
----------------	---------------	--------------	--------------	----------------------	--------------

n° 17	A PP 1849	6°	B PP 1929	7°	C PP 1768	4°	Tot PP 5546	Col. 3°
--------------	------------------	-----------	------------------	-----------	------------------	-----------	--------------------	----------------

